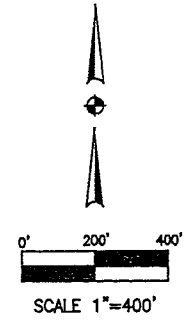
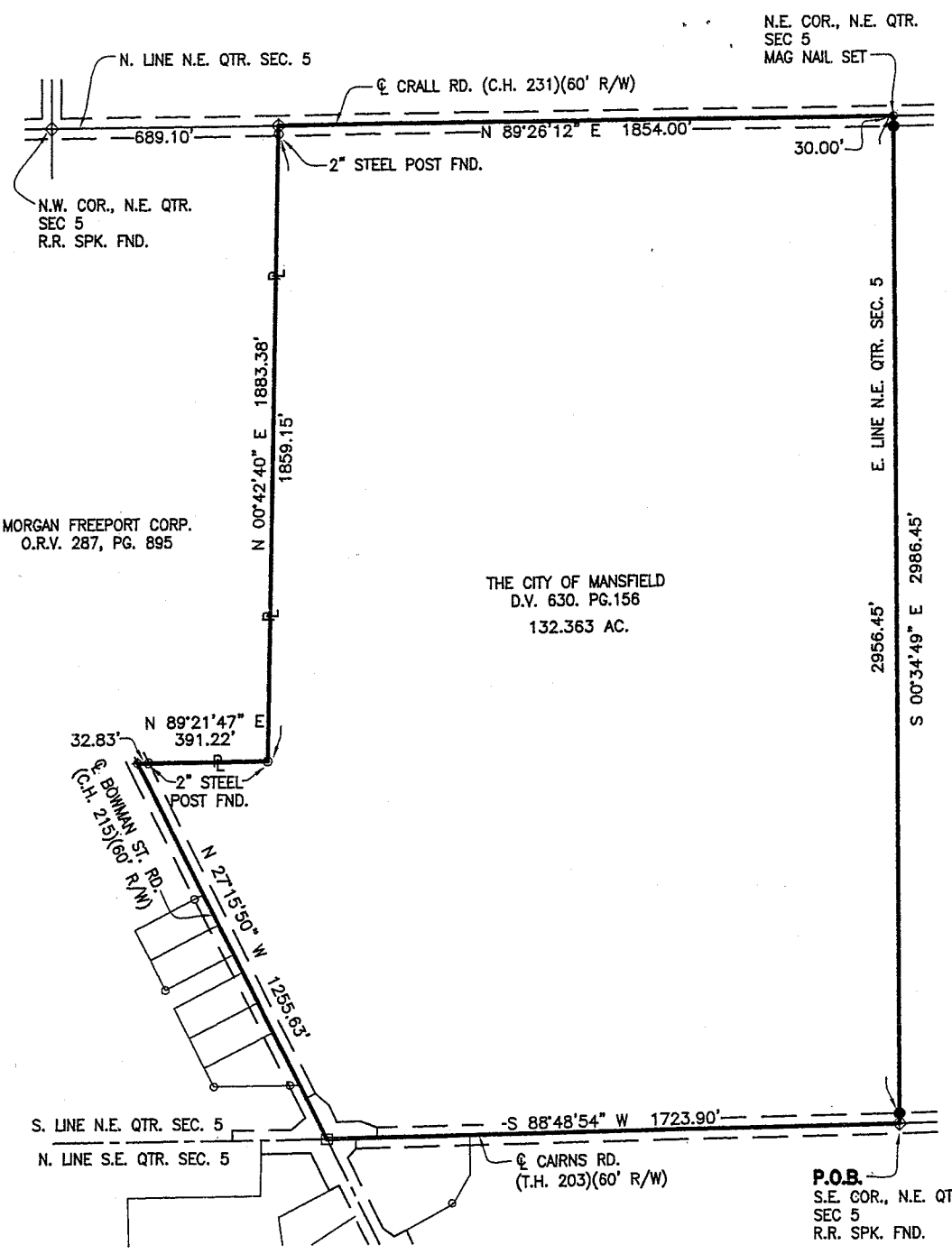


Y-296



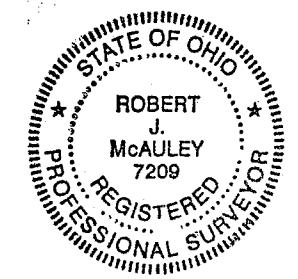
BASES OF BEARINGS
 ALL BEARINGS ARE BASED ON THE OHIO STATE PLANE COORDINATE SYSTEM, NORTH ZONE - BY GPS TRAVERSE ORIGINATING ON RCE MONUMENT 8108A AND NGS MONUMENT APRON.


LEGEND

- IRON PIN FOUND
- 5/8" DIAMETER X 30" LONG REBAR SET WITH PLASTIC CAP STAMPED "RICHLAND ENG. 7209".
- ◆ RAILROAD SPIKE FOUND
- ◆ MAG NAIL SET
- MONUMENT BOX FOUND

NEW SURVEY
 OF EXISTING PARCEL
 RICHLAND COUNTY
 TAX MAP OFFICE
 MJB 10-2-07
 INITIAL DATE

Robert J. McAuley 27 Sept 2007
 ROBERT J. MCAULEY DATE
 PROFESSIONAL SURVEYOR No. 7209



1 / 1						
 RICHLAND ENGINEERING LIMITED 419-524-0074 MANSFIELD, OHIO						
SURVEY FOR THE CITY OF MANSFIELD						
SITUATED IN THE CITY OF MANSFIELD, TOWNSHIP OF MADISON, COUNTY OF RICHLAND AND STATE OF OHIO BEING PART OF THE N.E. QTR. SEC. 5, TOWNSHIP 21, RANGE 18.						
DESIGNED	DRAWN	TRACED	CHECKED	REVIEWED	DATE	REVISED

REL F:\2007\107027\SUR.dwg User:Administrator Sep 27, 2007 - 11:51am



RICHLAND ENGINEERING LIMITED

29 North Park Street, Mansfield, Ohio 44902-1769 • 419/524-0074 FAX 419/524-1812

107087

**DESCRIPTION
FOR THE
CITY OF MANSFIELD
September 27, 2007**

Situated in the City of Mansfield, Township of Madison, County of Richland, State of Ohio and being part of the Northeast Quarter of Section 5, Township 21, Range 18 and being more particularly described as follows:

Beginning at a railroad spike found on the centerline of Cairns Road(T.H. 203) at the southeast corner of the Northeast Quarter of Section 5;

Thence South 88°48'54" West along the south line of the Northeast Quarter of Section 5, and the centerline of Cairns Road(T.H. 203), a distance of 1723.90 feet to a monument box found at the intersection of the centerline of Cairns Road(T.H. 203) and the centerline of Bowman Street Road(C.H. 215);

Thence North 27°15'50" West along the centerline of Bowman Street Road(C.H. 215), a distance of 1255.63 feet to a MAG nail set at the southwest corner of lands now or previously owned by Morgan Freeport Corporation as recorded in Official Record Volume 287, Page 895 of the Richland County Recorder's records ;

Thence North 89°21'47" East along the south line of said Freeport lands, passing through a 2 inch steel post found at a distance of 32.83 feet, a total distance of 391.22 feet to a 2 inch steel post found;

Thence North 00°42'40" East along the east line of said Freeport lands, passing through a 2 inch steel post found at a distance of 1859.15 feet, a total distance of 1883.38 feet to a railroad spike found on the north line of the Northeast Quarter of Section 5;

Thence North 89°26'12" East along the north line of the Northeast Quarter of Section 5, a distance of 1854.00 feet to a MAG nail set at the northeast corner of the Northeast Quarter of Section 5;

Thence South 00°34'49" East along the east line of the Northeast Quarter of Section 5, passing through a survey marker set at 30.00 feet and 2956.45 feet, a total distance of 2986.45 feet to the railroad spike found at the **Point of Beginning**, and containing 132.363 acres of land, more or less, subject to all highways, easements, and use restrictions of record.

This description is based upon an actual field survey made for the City of Mansfield in 2007 by Richland Engineering Limited. All bearings are based on the Ohio State Plane Coordinate System, North Zone, NAD83(95) - by GPS traverse originating on RCE monument 8108A and NGS monument APRON.

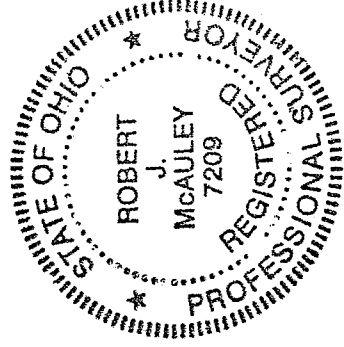
107087

**DESCRIPTION
FOR THE
CITY OF MANSFIELD
September 27, 2007**

Survey markers set are 5/8 inch diameter by 30 inch long rebar with a plastic cap stamped "RICHLAND ENG. 7209".

Deed Reference: Deed Volume 630, Page 156.

Robert J. McAuley 27 Sept 2007
Robert J. McAuley Date
Professional Surveyor No. 7209



NEW SURVEY
OF EXISTING PARCEL
RICHLAND COUNTY
TAX MAP OFFICE
RMB 10-2-07
INITIAL DATE

Y-296