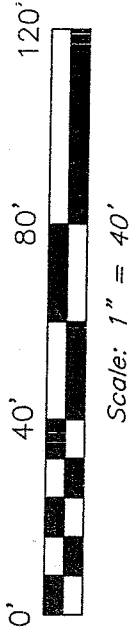
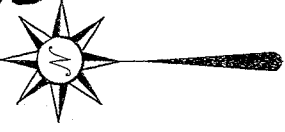


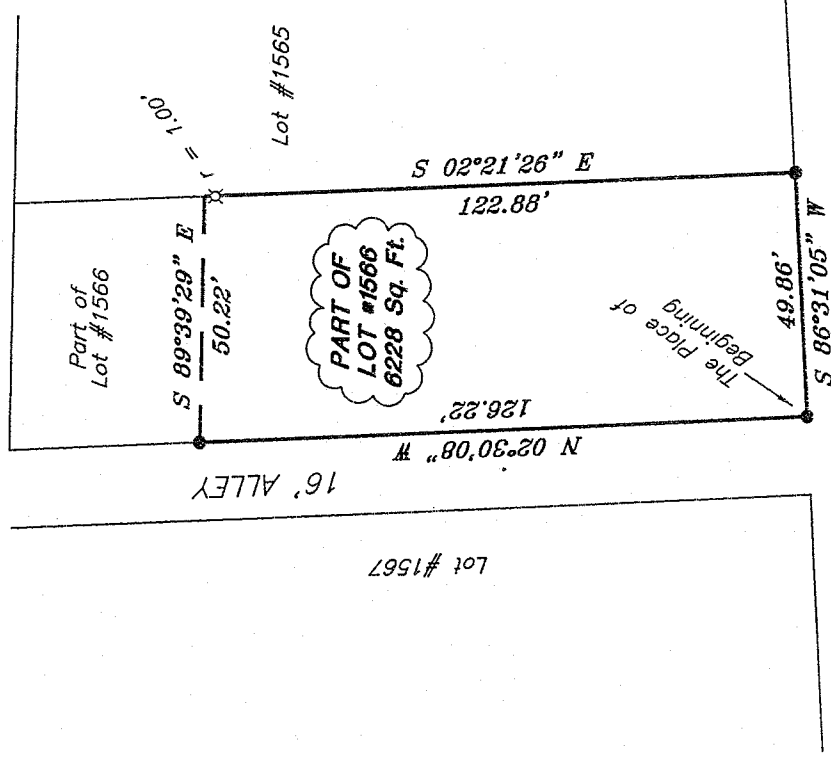
AVORD

Y-285

Bearings are based on an assumed meridian and are intended to be used for angular determination only.



SPRUCE STREET

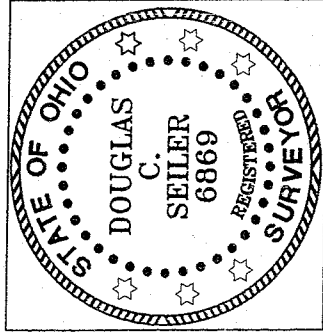


GLESSNER AVENUE

LEGEND

● iron pin found

⊗ 5/8" iron pin set with cap stamped "SEILER AND CRAIG, INC."



NEW SURVEY  
OF EXISTING PARCEL  
RICHLAND COUNTY  
TAX MAP OFFICE

MSB 9/18/07  
INITIAL DATE

*Douglas C. Seiler*

SURVEY BY: DOUGLAS C. SEILER PS #6869  
for SEILER & CRAIG SURVEYING INC.  
52-1/2 NORTH MAIN STREET  
MANSFIELD, OHIO 44902  
(419) 525-3644  
FAX (419) 525-3696

SURVEY PLAT FOR

MARK KNOX

PART OF LOT #1566  
CITY OF MANSFIELD  
OHIO

Date: September 17, 2007 Scale: 1" = 40'

160glessner.asc/.dwg

**SEILER & CRAIG SURVEYING, INC.**

Douglas C. Seiler, PS & Chad F. Craig, PS

52 1/2 North Main Street

Mansfield, Ohio 44902

419-525-3644 Fax 419-525-3696

[www.seilerandcraig.com](http://www.seilerandcraig.com)

**SURVEY DESCRIPTION**

PART OF LOT #1566  
CITY OF MANSFIELD, OHIO

Situated in the City of Mansfield, County of Richland, State of Ohio and being a part of Lot #1566 of the consecutively numbered lots in said city, and being more particularly described as follows:

Beginning for the same at an iron pin found and accepted as marking the southwest corner of said lot; Thence, North 02 degrees 30 minutes 08 seconds West with the west line of said lot, a distance of 126.22 feet to an iron pin found;

Thence, South 89 degrees 39 minutes 29 seconds East a distance of 50.22 feet to an existing property corner on the east line of said lot, as referenced by an iron pin set on a bearing of South 02 degrees 21 minutes 26 seconds East and at a distance of 1.00 foot from said corner;

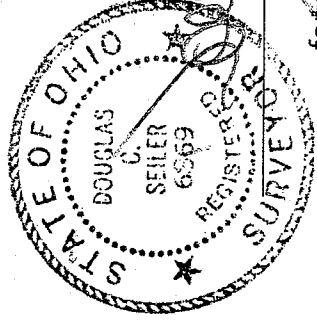
Thence, South 02 degrees 21 minutes 26 seconds East with said east line, passing through the afore-mentioned iron pin at 1.00 foot, a total distance of 122.88 feet to an iron pin found and accepted as marking the southeast corner of said lot;

Thence, South 86 degrees 31 minutes 05 seconds West with the south line of said lot, a distance of 49.86 feet to the place of beginning, containing 6228 square feet, according to survey by Douglas C. Seiler, Professional Surveyor #6869, on September 17, 2007.

Iron pins set are 5/8" rods with caps stamped "SEILER AND CRAIG INC."

Bearings are based on an assumed meridian and are intended to be used for angular determination only.

NEW SURVEY  
OF EXISTING PARCEL  
RICHLAND COUNTY  
TAX MAP OFFICE  
Mib 9-18-07  
INITIAL DATE



Douglas C. Seiler PS #6869  
for Seiler & Craig Surveying, Inc.

V-285