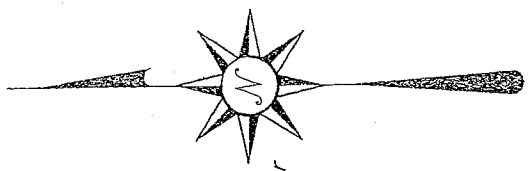
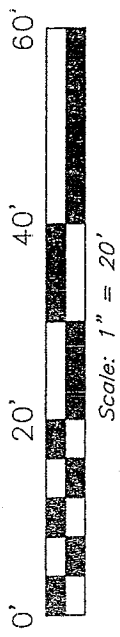


NOIDA



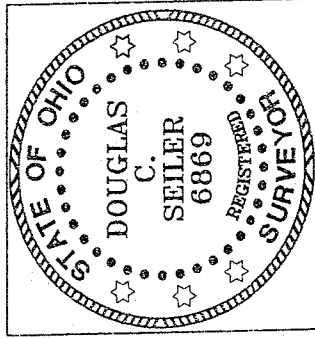
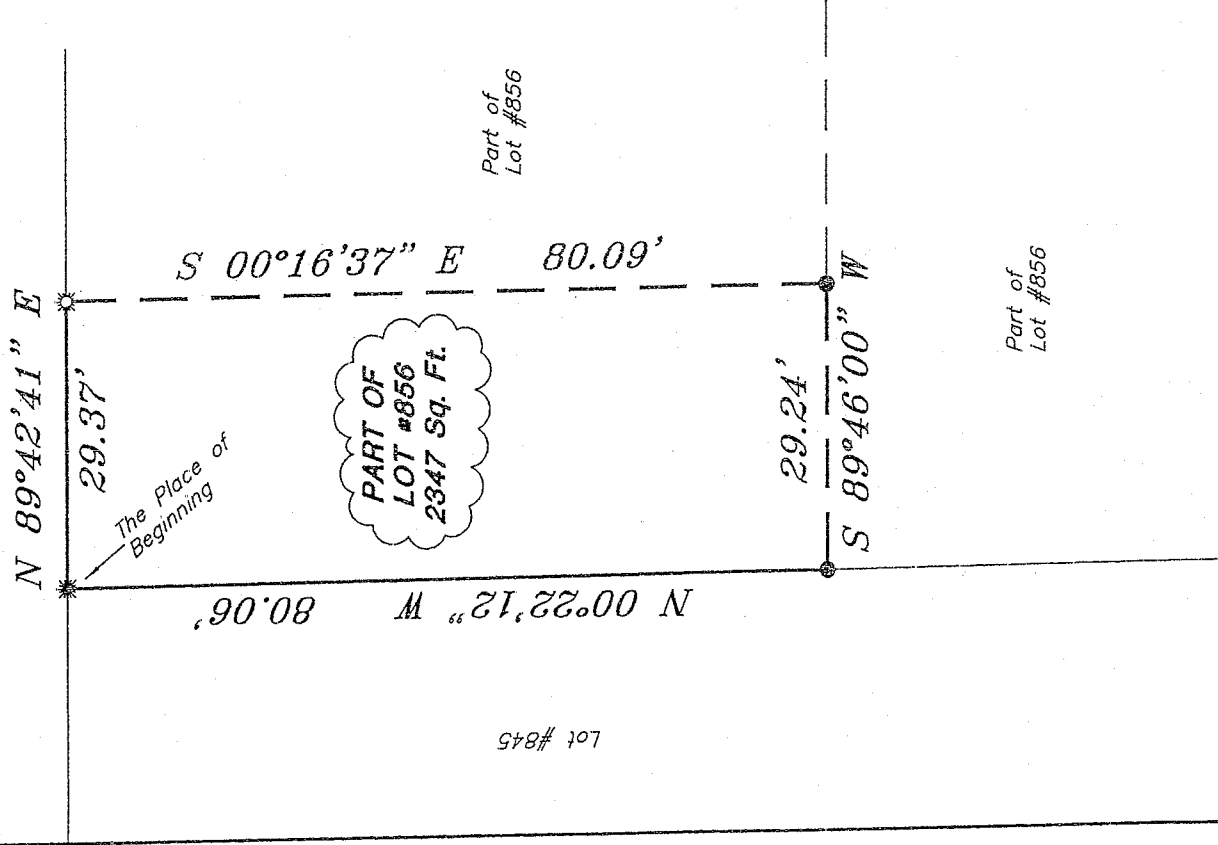
Bearings are based on an assumed meridian and are intended to be used for angular determination only.



LEGEND

- drill hole, found
- iron pin found
- drill hole, set

EAST THIRD STREET



Douglas C. Seiler

SURVEY BY: DOUGLAS C. SEILER PS. #6869
 FOR--SEILER & CRAIG SURVEYING INC.
 52-1/2 NORTH MAIN STREET
 MANSFIELD, OHIO 44902
 (419) 525-3644
 FAX (419) 525-3696

NEW SURVEY
 OF EXISTING PARCEL
 RICHLAND COUNTY
 TAX MAP OFFICE
 MB 4-8-07
 INITIAL DATE

SURVEY PLAT FOR
 DAN MADDEN

PART OF LOT #856
 CITY OF MANSFIELD
 OHIO

Date: August 31, 2007 Scale: 1" = 20'
 madden8072

Y-264

Y-264

Y-264

SEILER & CRAIG SURVEYING, INC.

Douglas C. Seiler, PS & Chad F. Craig, PS

52 1/2 North Main Street

Mansfield, Ohio 44902

419-525-3644 Fax 419-525-3696

www.seilerandcraig.com

SURVEY DESCRIPTION

PART OF LOT #856
CITY OF MANSFIELD, OHIO

Situated in the City of Mansfield, County of Richland, State of Ohio and being a part of Lot #856 of the consecutively numbered lots in said city, and being more particularly described as follows:

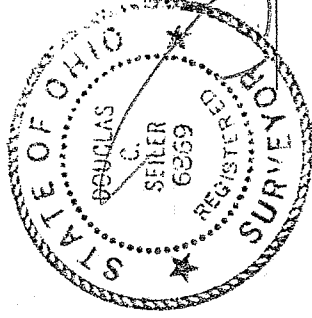
Beginning for the same at a drill hole found and accepted as marking the northwest corner of said lot; Thence, North 89 degrees 42 minutes 41 seconds East with the north line of said lot, a distance of 29.37 feet to a drill hole set;

Thence, South 00 degrees 16 minutes 37 seconds East a distance of 80.09 feet to an iron pin found;

Thence, South 89 degrees 46 minutes 00 seconds West a distance of 29.24 feet to an iron pin found on the west line of said lot;

Thence, North 00 degrees 22 minutes 12 seconds West with said west line, a distance of 80.06 feet to the place of beginning, containing 2347 square feet, according to survey by Douglas C. Seiler, Professional Surveyor #6869, on August 31, 2007.

Bearings are based on an assumed meridian and are intended to be used for angular determination only.



Douglas C. Seiler
Douglas C. Seiler PS #6869
for Seiler & Craig Surveying, Inc.

NEW SURVEY
OF EXISTING PARCEL
RICHLAND COUNTY
TAX MAP OFFICE

MLB / 4-9-07
INITIAL / DATE