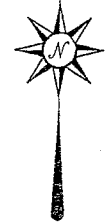
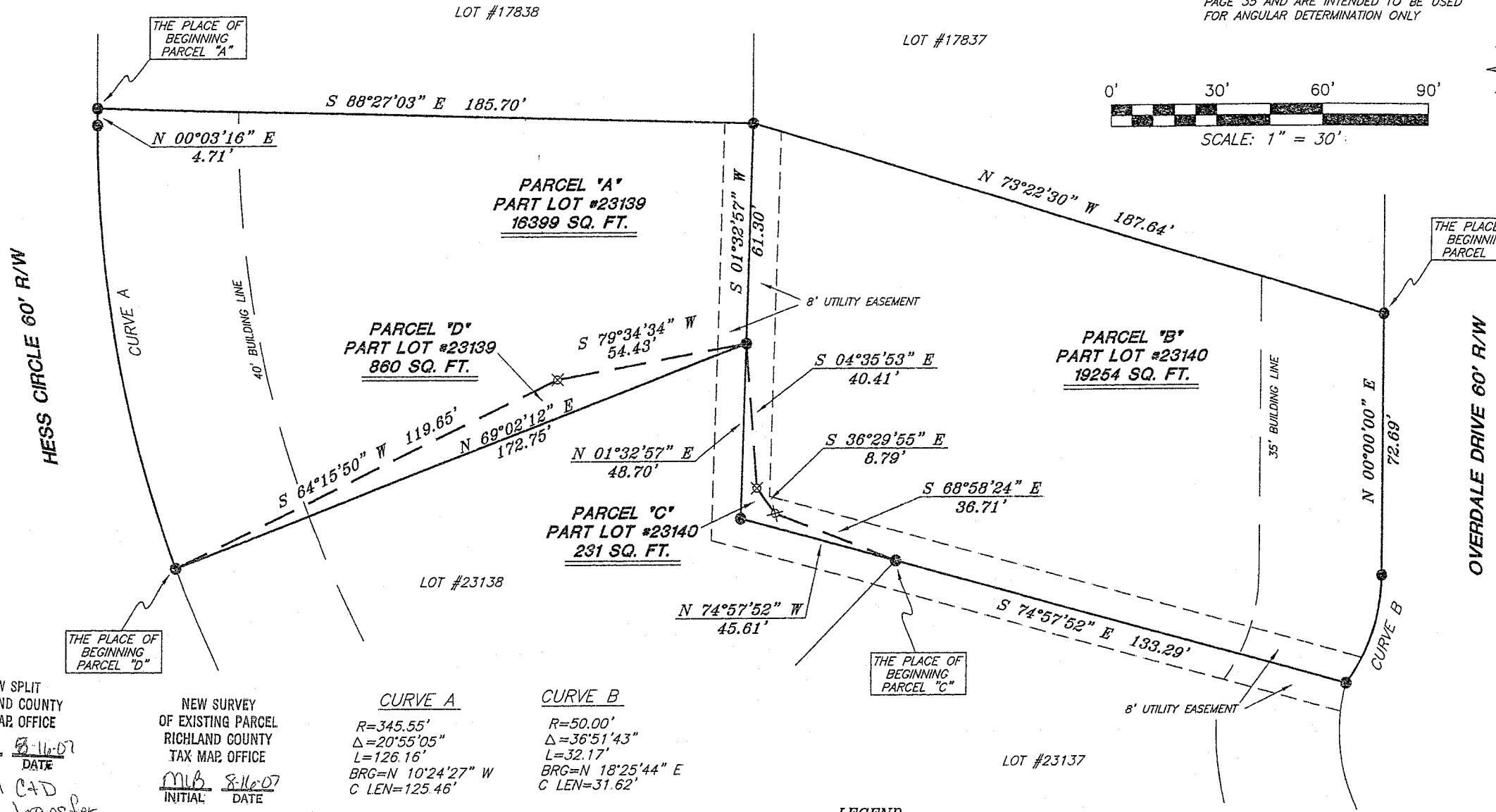


BEARINGS ARE BASED ON PLAT VOLUME 29, PAGE 35 AND ARE INTENDED TO BE USED FOR ANGULAR DETERMINATION ONLY



SCALE: 1" = 30'



PARCEL "A"
PART LOT #23139
16399 SQ. FT.

PARCEL "D"
PART LOT #23139
860 SQ. FT.

PARCEL "B"
PART LOT #23140
19254 SQ. FT.

PARCEL "C"
PART LOT #23140
231 SQ. FT.

CURVE A
R=345.55'
Δ=20°55'05"
L=126.16'
BRG=N 10°24'27" W
C LEN=125.46'

CURVE B
R=50.00'
Δ=36°51'43"
L=32.17'
BRG=N 18°25'44" E
C LEN=31.62'

LEGEND

- IRON PIN FOUND
- ⊗ 5/8" IRON PIN SET WITH CAP STAMPED "SEILER AND CRAIG, INC."

NEW SPLIT
RICHLAND COUNTY
TAX MAP OFFICE

MLB 8-16-07
INITIAL DATE

Parcel C+D
Must transfer
First!

NEW SURVEY
OF EXISTING PARCEL
RICHLAND COUNTY
TAX MAP OFFICE

MLB 8-16-07
INITIAL DATE

Chad F. Craig

SURVEY BY: CHAD F. CRAIG P.S. #8195
for SEILER & CRAIG SURVEYING INC.
52-1/2 NORTH MAIN STREET
MANSFIELD, OHIO 44902
(419) 525-3644
FAX (419) 525-3696



SURVEY PLAT FOR	
DON KYLE and AL HESS	
PART LOT #23139 & PART LOT #23140	
CITY OF MANSFIELD	
RICHLAND COUNTY, OHIO	
DATE: AUGUST 6, 2007	SCALE: 1"=30'
1528HESSCIR	

SEILER & CRAIG SURVEYING, INC.

Douglas C. Seiler, PS & Chad F. Craig, PS
52 1/2 North Main Street
Mansfield, Ohio 44902
419-525-3644 Fax 419-525-3696
www.seilerandcraig.com

SURVEY DESCRIPTION

PARCEL "D"

PART OF LOT # 23139
CITY OF MANSFIELD, OHIO

Situated in the City of Mansfield, County of Richland, State of Ohio and being known as a part of Lot #23139 of the consecutively numbered lots in said city (plat reference: Volume 29, page 35), and being more particularly described as follows:

Beginning for the same at an iron pin found and accepted as marking the southwest corner of said lot; Thence, North 69 degrees 02 minutes 12 seconds East with the south line of said lot, a distance of 172.75 feet to an iron found and accepted as marking the northeast corner thereof;

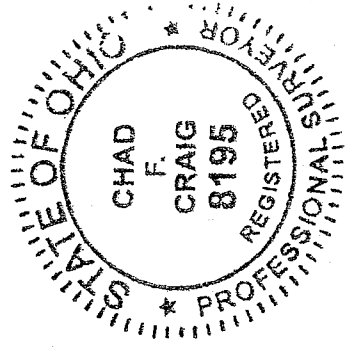
Thence, South 79 degrees 34 minutes 34 seconds West a distance of 54.43 feet to an iron pin set;

Thence, South 64 degrees 15 minutes 50 seconds West a distance of 119.65 feet to the place of beginning, containing 860 square feet, according to survey by Chad F. Craig Professional Surveyor #8195 for Seiler & Craig Surveying, Inc. on August 6, 2007.

The grantee, his heirs and assigns do hereby covenant and agree that the parcel of land described by this instrument will not be conveyed by said grantee, heirs, or assigns independently from a contiguous parcel of land without the approval of the City of Mansfield Planning Commission.

Iron pins set are 5/8" rods with caps stamped "SEILER AND CRAIG, INC."

Bearings are based on an assumed meridian and are intended to be used for angular determination only.



Chad F. Craig

Chad F. Craig P.S. #8195
for Seiler & Craig Surveying, Inc.

NEW SPLIT
RICHLAND COUNTY
TAX MAP OFFICE

MMB
INITIAL
2-14-07
DATE
*This Parcel
Must transfer
before parcel "A"*

Y. 236

SEILER & CRAIG SURVEYING, INC.

Douglas C. Seiler, PS & Chad F. Craig, PS
52 1/2 North Main Street
Mansfield, Ohio 44902
419-525-3644 Fax 419-525-3696
www.seilerandcraig.com

SURVEY DESCRIPTION

PARCEL "C"

PART OF LOT # 23140
CITY OF MANSFIELD, OHIO

Situated in the City of Mansfield, County of Richland, State of Ohio and being known as a part of Lot #23140 of the consecutively numbered lots in said city (plat reference: Volume 29, page 35), and being more particularly described as follows:

Beginning for the same at an iron pin found and accepted as marking the northeast corner of Lot #23138 in said city, the same being a point on the south line of Lot #23140; Thence, North 74 degrees 57 minutes 52 seconds West with said south line, a distance of 45.61 feet to an iron pin found and accepted as marking the southwest corner of said Lot #23140;

Thence, North 01 degree 32 minutes 57 seconds East with the west line of said lot, a distance of 48.70 feet to an iron pin found and accepted as making the northeast corner of Lot #23138;

Thence, South 04 degrees 35 minutes 53 seconds East a distance of 40.41 feet to an iron pin set;

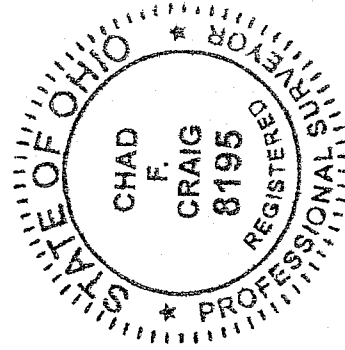
Thence, South 36 degrees 29 minutes 55 seconds East a distance of 8.79 feet to an iron pin set;

Thence, South 68 degrees 58 minutes 24 seconds East a distance of 36.71 feet to the place of beginning, containing 231 square feet, according to survey by Chad F. Craig Professional Surveyor #8195 for Seiler & Craig Surveying, Inc. on August 6, 2007.

The grantee, his heirs and assigns do hereby covenant and agree that the parcel of land described by this instrument will not be conveyed by said grantee, heirs, or assigns independently from a contiguous parcel of land without the approval of the City of Mansfield Planning Commission.

Iron pins set are 5/8" rods with caps stamped "SEILER AND CRAIG, INC."

Bearings are based on an assumed meridian and are intended to be used for angular determination only.



Chad F. Craig
Chad F. Craig P.S. #8195
for Seiler & Craig Surveying, Inc.

NEW SPLIT
RICHLAND COUNTY
TAX MAP OFFICE

INDIAN DATE

*This Parcel
must transfer
above Parcel "B"*

Y-236

V-236

Y-236

SEILER & CRAIG SURVEYING, INC.

Douglas C. Seiler, PS & Chad F. Craig, PS
52 1/2 North Main Street
Mansfield, Ohio 44902
419-525-3644 Fax 419-525-3696
www.seilerandcraig.com

SURVEY DESCRIPTION

PARCEL "A"

PART OF LOT # 23139
CITY OF MANSFIELD, OHIO

Situated in the City of Mansfield, County of Richland, State of Ohio and being known as a part of Lot #23139 of the consecutively numbered lots in said city (plat reference: Volume 29, page 35), and being more particularly described as follows:

Beginning for the same at an iron pin found and accepted as marking the northwest corner of said lot; Thence, South 88 degrees 27 minutes 03 seconds East with the north line of said lot, a distance of 185.70 feet to an iron pin found and accepted as marking the northeast corner thereof;

Thence, South 01 degree 32 minutes 57 seconds West with the east line of said lot, a distance of 61.30 feet to an iron pin found and accepted as marking the southeast corner of said lot;

Thence, South 79 degrees 34 minutes 34 seconds West, a distance of 54.43 feet to an iron pin set;

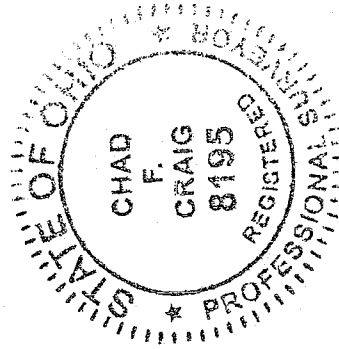
Thence, South 64 degrees 15 minutes 50 seconds West a distance of 119.65 feet to an iron pin found and accepted as marking the southwest corner of said lot;

Thence, with a curve to the right, with the west line of said lot, said curve having a central angle of 20 degrees 55 minutes 05 seconds, a radius of 345.55 feet, an arc length of 126.16 feet, on a chord bearing of North 10 degrees 24 minutes 27 seconds West and a chord length of 125.46 feet to an iron pin found;

Thence, North 00 degrees 03 minutes 16 seconds East with said west line a distance of 4.71 feet to the place of beginning, containing 16399 square feet, according to survey by Chad F. Craig Professional Surveyor #8195 for Seiler & Craig Surveying, Inc. on August 6, 2007.

Iron pins set are 5/8" rods with caps stamped "SEILER AND CRAIG, INC."

Bearings are based on an assumed meridian and are intended to be used for angular determination only.



Chad F. Craig
Chad F. Craig P.S. #8195

for Seiler & Craig Surveying, Inc.

NEW SURVEY
OF EXISTING PARCEL
RICHLAND COUNTY
TAX MAP OFFICE

MWB & Co. D7
INITIAL DATE
Parcel "D"
Must transfer
Before this
Parcel!

SEILER & CRAIG SURVEYING, INC.

Douglas C. Seiler, PS & Chad F. Craig, PS
52 1/2 North Main Street
Mansfield, Ohio 44902
419-525-3644 Fax 419-525-3696
www.seilerandcraig.com

SURVEY DESCRIPTION

PARCEL "B"

PART OF LOT # 23140
CITY OF MANSFIELD, OHIO

Situated in the City of Mansfield, County of Richland, State of Ohio and being known as a part of Lot #23140 of the consecutively numbered lots in said city (plat reference: Volume 29, page 35), and being more particularly described as follows:

Beginning for the same at an iron pin found and accepted as marking the northeast corner of said lot; Thence, North 73 degrees 22 minutes 30 seconds West with the north line of said lot, a distance of 187.64 feet to an iron pin found and accepted as marking the northwest corner thereof;

Thence, South 01 degree 32 minutes 57 seconds West with the west line of said lot, a distance of 61.30 feet to an iron pin found and accepted as marking the southeast corner of Lot #23139, the same being the northeast corner of Lot #23138;

Thence, South 04 degrees 35 minutes 53 seconds East a distance of 40.41 feet to an iron pin set;

Thence, South 36 degrees 29 minutes 55 seconds East a distance of 8.79 feet to an iron pin set;

Thence, South 68 degrees 58 minutes 24 seconds East a distance of 36.71 feet to an iron pin found on the south line of Lot #23140, the same being the northeast corner of Lot #23138;

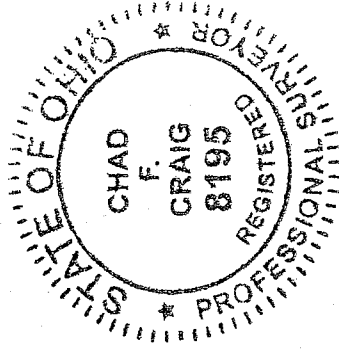
Thence, South 74 degrees 57 minutes 52 seconds East with the south line of Lot #23140, a distance of 133.29 feet to an iron pin found and accepted as marking the southeast corner thereof;

Thence, with a curve to the left, with the east line of said lot, said curve having a central angle of 36 degrees 51 minutes 43 seconds, a radius of 50.00 feet, an arc length of 32.17 feet, on a chord bearing of North 18 degrees 25 minutes 44 seconds East and a chord length of 31.62 feet to an iron pin found;

Thence, North 00 degrees 00 minutes 00 seconds East with said east line a distance of 72.69 feet to the place of beginning, containing 19254 square feet, according to survey by Chad F. Craig Professional Surveyor #8195 for Seiler & Craig Surveying, Inc. on August 6, 2007.

Iron pins set are 5/8" rods with caps stamped "SEILER AND CRAIG, INC."

Bearings are based on an assumed meridian and are intended to be used for angular determination only.



NEW SURVEY
OF EXISTING PARCEL
RICHLAND COUNTY
TAX MAP OFFICE

INITIAL DATE
MFB 8/16/07

Parcel "C" must
transfer before
this parcel

Chad F. Craig
Chad F. Craig P.S. #8195
for Seiler & Craig Surveying, Inc.

Y-236

1234