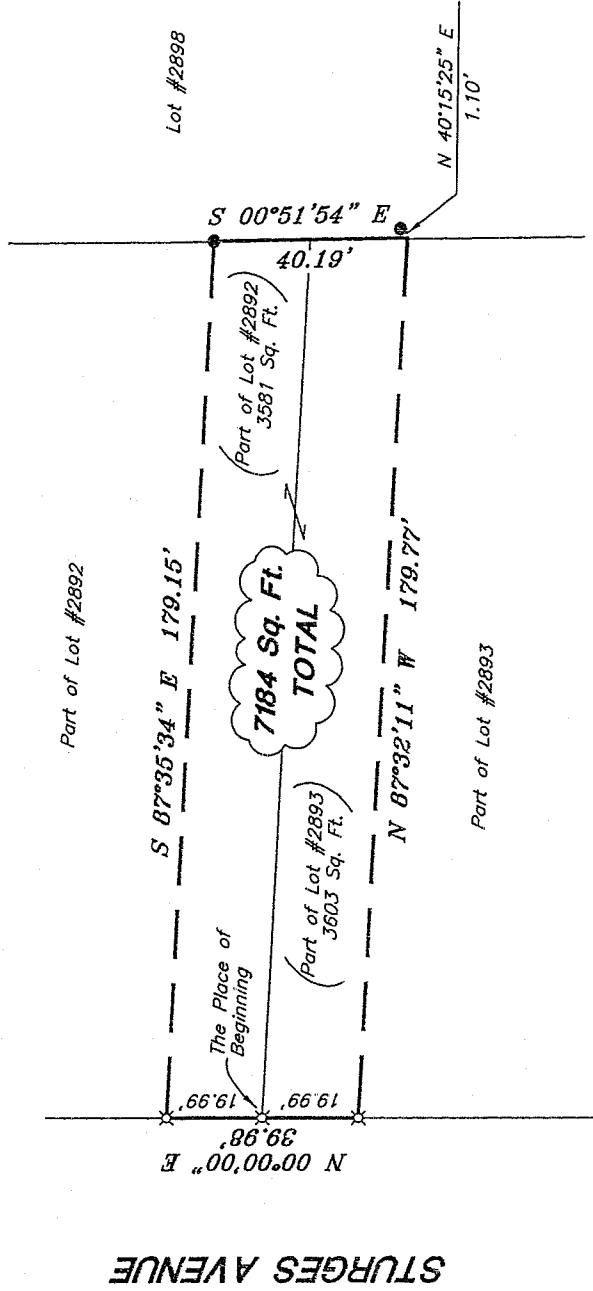
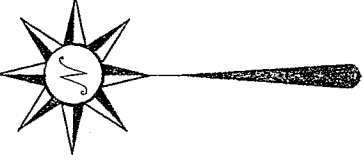


Y-225  
AORD 19

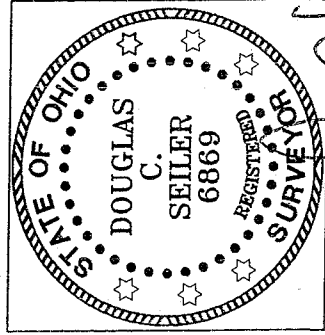
**LEGEND**

- IRON PIN FOUND
- ⊗ 5/8" IRON PIN SET WITH CAP STAMPED "SEILER AND CRAIG, INC."

Bearings are based on an assumed meridian and are intended to be used for angular determination only.



STURGES AVENUE



NEW SURVEY  
OF EXISTING PARCEL  
RICHLAND COUNTY  
TAX MAP OFFICE

Initial: mb Date: 8-8-07

*Douglas C. Seiler*

SURVEY BY: DOUGLAS C. SEILER PS. #6869  
for SEILER & CRAIG SURVEYING INC.  
52-17-2 NORTH MAIN STREET  
MANSFIELD, OHIO 44902  
(419) 525-3644  
FAX (419) 525-3696

SURVEY PLAT

GERNER REO

PART OF LOT #2893 & PART OF LOT #2892  
CITY OF MANSFIELD  
OHIO

Date: August 3, 2007

Scale: 1" = 40'

239sturges.asc/.dwg

**SEILER & CRAIG SURVEYING, INC.**

Douglas C. Seiler, PS & Chad F. Craig, PS  
52 1/2 North Main Street  
Mansfield, Ohio 44902  
419-525-3644 Fax 419-525-3696  
www.seilerandcraig.com

**SURVEY DESCRIPTION**

PART OF LOT #2892 and  
PART OF LOT #2893  
CITY OF MANSFIELD, OHIO

Situated in the City of Mansfield, County of Richland, State of Ohio and being a part of Lot #2892 and a part of Lot #2893 of the consecutively numbered lots in said city, the entire tract being more particularly described as follows:

Beginning for the same at an iron pin set marking the southwest corner of said Lot #2892; Thence, North 00 degrees 00 minutes 00 seconds East with the west line of said lot, a distance of 19.99 feet to an iron pin set;

Thence, South 87 degrees 35 minutes 34 seconds East a distance of 179.15 feet to an iron pin found on the east line of said lot;

Thence, South 00 degrees 51 minutes 54 seconds East with said east line and the southerly prolongation thereof, a distance of 40.19 feet to a point as referenced by an iron pin found on a bearing of North 40 degrees 15 minutes 25 seconds East and at a distance of 1.10 feet from said point;

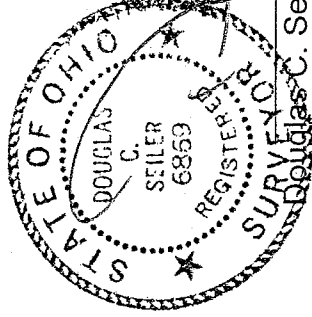
Thence, North 87 degrees 32 minutes 11 seconds West a distance of 179.77 feet to an iron pin set on the east line of Sturges Avenue;

Thence, North 00 degrees 00 minutes 00 seconds East with said east line, a distance of 19.99 feet to the place of beginning, containing a total of 7184 square feet, of which 3581 square feet are located within part of said Lot #2892, and 3603 square feet are located within part of said Lot #2893, according to survey by Douglas C. Seiler Professional Surveyor #6869, on August 2, 2007.

Iron pins set are 5/8" rods with caps stamped "SEILER AND CRAIG INC."

Bearings are based on an assumed meridian and are intended to be used for angular determination only.

NEW SURVEY  
OF EXISTING PARCEL  
RICHLAND COUNTY  
TAX MAP OFFICE  
MCS 8-8-07  
INITIAL DATE



Douglas C. Seiler Professional Surveyor #6869  
for Seiler & Craig Surveying, Inc.

4-225