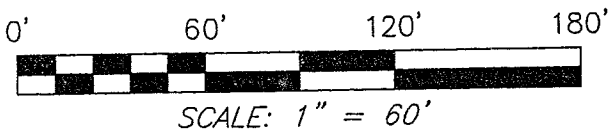


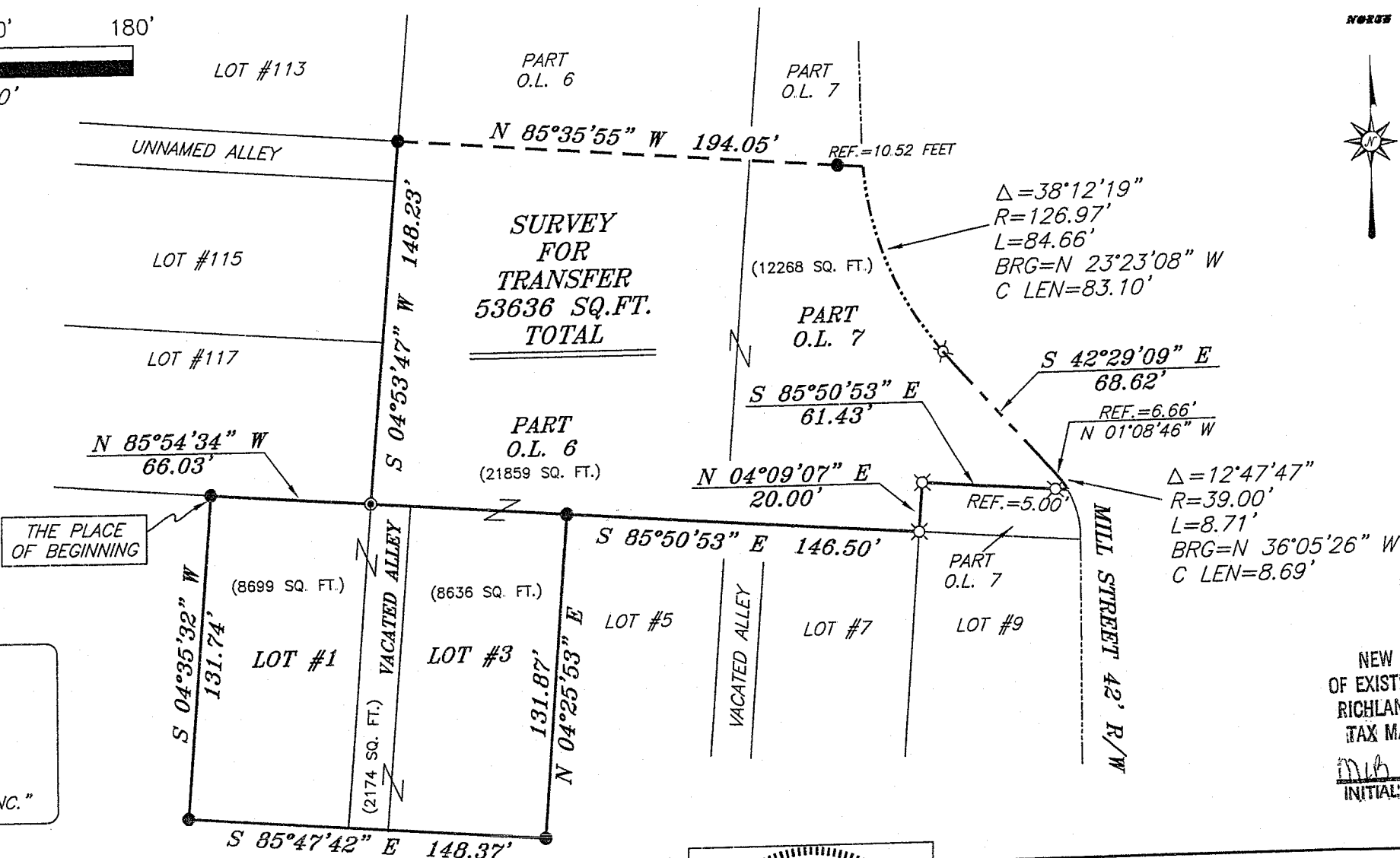
Y-151



NOTE



BEARINGS ARE BASED ON AN ASSUMED MERIDIAN AND ARE INTENDED TO BE USED FOR ANGULAR DETERMINATION ONLY.

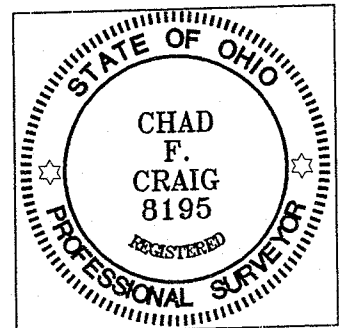


LEGEND

- IRON PIN FOUND
- ⊙ DRILL HOLE SET
- ▲ RAILROAD SPIKE FOUND
- ⊗ 5/8" IRON PIN SET WITH CAP STAMPED "SEILER AND CRAIG, INC."

NEW SURVEY OF EXISTING PARCEL
 RICHLAND COUNTY
 TAX MAP OFFICE
 Initial: mlb DATE: 6-22-07

Chad F. Craig
 SURVEY BY: CHAD F. CRAIG P.S. #6869
 for SEILER & CRAIG SURVEYING INC.
 52-1/2 NORTH MAIN STREET
 MANSFIELD, OHIO 44902
 (419) 525-3644
 FAX (419) 525-3696



SURVEY PLAT FOR	
PROPERTY TRANSFER	
LOT #1, LOT #3, VAC. ALLEY, PART O.L. 6 AND PART O.L. 7, VILLAGE OF LEXINGTON, RICHLAND COUNTY, OHIO	
DATE: JUNE 15, 2007	SCALE: 1"=60'
LEXBURTON.DWG	

SEILER & CRAIG SURVEYING, INC.

Douglas C. Seiler, PS & Chad F. Craig, PS
52 1/2 North Main Street
Mansfield, Ohio 44902
419-525-3644 Fax 419-525-3696
www.seilerandcraig.com

SURVEY DESCRIPTION

LOT #1, LOT #3, VACATED ALLEY,
PART O.L. 6 AND PART O.L. 7
VILLAGE OF LEXINGTON,
RICHLAND COUNTY, OHIO

Situated in the Village of Lexington, County of Richland, State of Ohio and being known as Lot #1, Lot #3, a vacated alley, Part of O.L. 6 and Part of O.L. 7 said village, and being more particularly described as follows:

Beginning for the same at an iron pin found and accepted as marking the northwest corner of Lot #1; Thence, South 04 degrees 35 minutes 32 seconds West with the west line of said lot, a distance of 131.74 feet to an iron pin found and accepted as marking the southwest corner thereof;

Thence, South 85 degrees 47 minutes 42 seconds East with the south line of said lot and the easterly prolongation thereof, a distance of 148.37 feet to an iron pin found and accepted as marking the southeast corner of Lot #3;

Thence, North 04 degrees 25 minutes 53 seconds East with the east line of said lot, a distance of 131.87 feet to an iron pin found and accepted as marking the northeast corner thereof, said iron pin also being a point on the south line of O.L. 6;

Thence, South 85 degrees 50 minutes 53 seconds East with said south line and the easterly prolongation thereof, a distance of 146.50 feet to an iron pin set on the south line of O.L. 7;

Thence, North 04 degrees 09 minutes 07 seconds East a distance of 20.00 feet to an iron pin set;

Thence, South 85 degrees 50 minutes 53 seconds East passing through an iron pin set for reference at 56.43 feet, a total distance of 61.43 feet to an iron pin set on the westerly right of way of Mill Street;

Thence, with said right of way with a curve to the left with a central angle of 12 degrees 47 minutes 47 seconds, with a radius of 39.00 feet, an arc length of 8.71 feet, a chord bearing of North 36 degrees 05 minutes 26 seconds West and a chord length of 8.69 feet to a point, said point referenced by an iron pin set on a bearing of South 01 degree 08 minutes 46 seconds East and at a distance of 6.66 feet;

Thence, continuing with said right of way, North 42 degrees 29 minutes 09 seconds West a distance of 68.62 feet to an iron pin set;

Y-151

Thence, continuing with said right of way with a curve to the right with a central angle of 38 degrees 12 minutes 19 seconds, with a radius of 126.97 feet, an arc length of 84.66 feet, a chord bearing of North 23 degrees 23 minutes 08 seconds West with a chord length of 83.10 feet to a point, said point referenced by an iron pin found on a bearing of North 85 degrees 35 minutes 55 seconds West and at a distance of 10.52 feet;

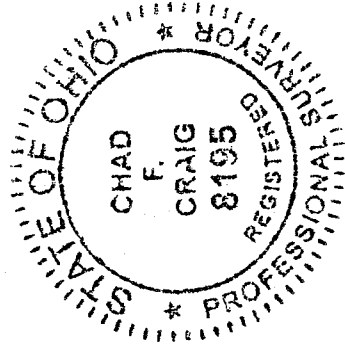
Thence, North 85 degrees 35 minutes 55 seconds West pass through said reference pin, a total distance of 194.05 feet to an iron pin found and accepted as marking the southeast corner of Lot #113, the same being a point on the west line of O.L. 6;

Thence, South 04 degrees 53 minutes 47 seconds West with the west line of O.L. 6, a distance of 148.23 feet to a drill hole set on the northeast corner of Lot #1;

Thence, North 85 degrees 54 minutes 34 seconds West with the north line of said lot, a distance of 66.03 feet to the place of beginning, containing a total of 53636 square feet of which 8699 square feet are located within Lot #1, 8636 square feet are located within Lot #3, 21859 square feet are located within part of O.L. 6, 12268 square feet are located within part of O.L. 7 and 2174 square feet are located within a vacated alley according to survey by Chad F. Craig P.S. #8195 for Seiler and Craig Surveying, Inc. on June 15, 2007.

Iron pins set are 5/8" rods with caps stamped "SEILER AND CRAIG, INC".

Bearings are based on an assumed meridian and are intended to be used for angular determination only.



Chad F. Craig

Chad F. Craig P.S. #8195
for Seiler and Craig Surveying, Inc.

NEW SURVEY
OF EXISTING PARCEL
RICHLAND COUNTY
TAX MAP, OFFICE

MLC INITIAL *6-22-07* DATE