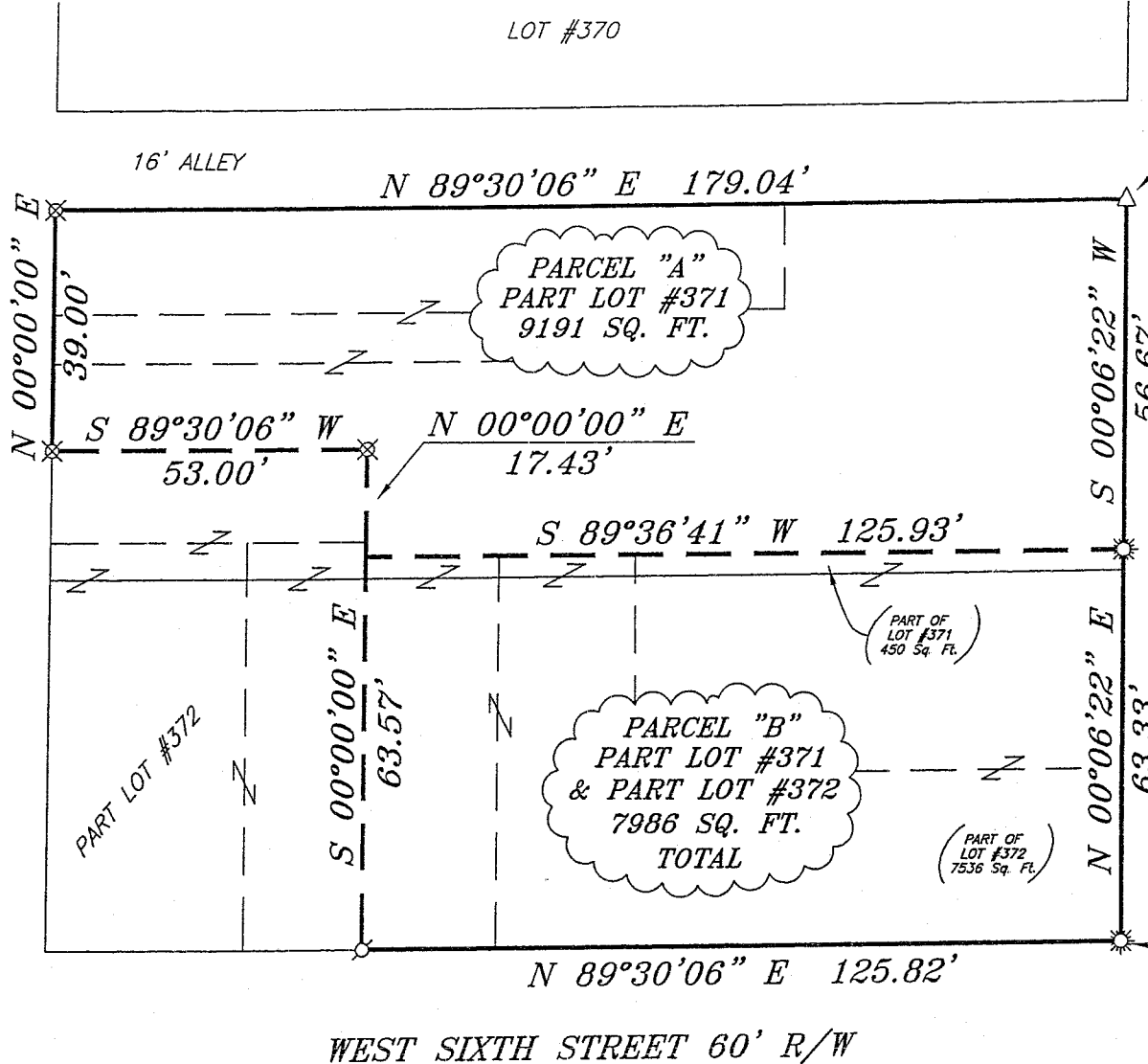
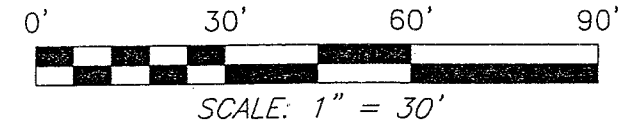


NORTH WALNUT STREET 60' R/W

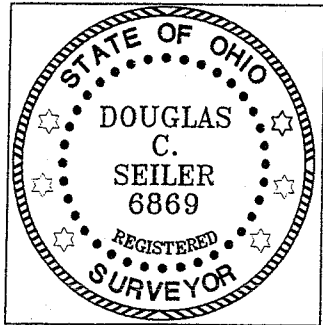


THE PLACE OF BEGINNING PARCEL "A"



BEARINGS ARE BASED ON AN ASSUMED MERIDIAN AND ARE INTENDED TO BE USED FOR ANGULAR DETERMINATION ONLY

THE PLACE OF BEGINNING PARCEL "B"



WEST SIXTH STREET 60' R/W

LEGEND

- DRILL HOLE SET
- 2" MAG NAIL SPIKE SET
- RAILROAD SPIKE SET
- 5/8" IRON PIN SET WITH CAP STAMPED "SEILER AND CRAIG, INC."

NEW SURVEY
OF EXISTING PARCEL
RICHLAND COUNTY
TAX MAP OFFICE

MSB 5-30-07
INITIAL DATE

SURVEY BY: *Douglas C. Seiler*
DOUGLAS C. SEILER PS. #6869
for SEILER & CRAIG SURVEYING INC.
52-1/2 NORTH MAIN STREET
MANSFIELD, OHIO 44902
(419) 525-3644
FAX (419) 525-3696

SURVEY PLAT FOR	
CITY OF MANSFIELD COMMUNITY DEVELOPMENT DEPARTMENT	
PART LOT #371 & PART LOT #372 CITY OF MANSFIELD RICHLAND COUNTY, OHIO	
DATE: MAY 22, 2007	SCALE: 1"=30'
BARTON507	

Y-119

SEILER & CRAIG SURVEYING, INC.

Douglas C. Seiler, PS & Chad F. Craig, PS
52 1/2 North Main Street
Mansfield, Ohio 44902
419-525-3644 Fax 419-525-3696
www.seilerandcraig.com

SURVEY DESCRIPTION

PARCEL "A"

PART OF LOT #371
CITY OF MANSFIELD, OHIO

Situated in the City of Mansfield, County of Richland, State of Ohio and being a part of Lot #371 of the consecutively numbered lots in said city, and being more particularly described as follows:

Beginning for the same at a railroad spike set marking the northeast corner of said lot; Thence, South 00 degrees 06 minutes 22 seconds West with the east line of said lot, a distance of 56.67 feet to a drill hole in concrete set;

Thence, South 89 degrees 36 minutes 41 seconds West a distance of 125.93 feet to a point as referenced by an iron pin set on a bearing of North 00 degrees 00 minutes 00 seconds East and at a distance of 17.43 feet from said point;

Thence, North 00 degrees 00 minutes 00 seconds East a distance of 17.43 feet to an iron pin set;

Thence, South 89 degrees 30 minutes 06 seconds West a distance of 53.00 feet to an iron pin set on the west line of said lot;

Thence, North 00 degrees 00 minutes 00 seconds East with said west line, a distance of 39.00 feet to an iron pin set;

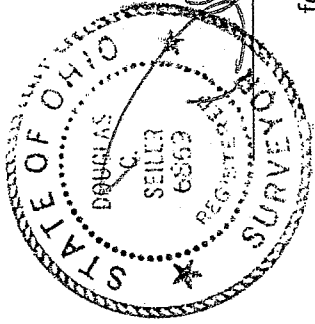
Thence, North 89 degrees 30 minutes 06 seconds East with the north line of said lot, a distance of 179.04 feet to the place of beginning, containing a total of 9191 square feet, according to survey by Douglas C. Seiler Professional Surveyor #6869, on May 23, 2007.

Iron pins set are 5/8" rods with caps stamped "SEILER AND CRAIG INC."

Bearings are based on an assumed meridian and are intended to be used for angular determination only.

NEW SURVEY
OF EXISTING PARCEL
RICHLAND COUNTY
TAX MAP OFFICE

MLB 5/2007
INITIAL DATE



Douglas C. Seiler
Douglas C. Seiler PS #6869
for Seiler & Craig Surveying, Inc.

4/11/07

SEILER & CRAIG SURVEYING, INC.

Douglas C. Seiler, PS & Chad F. Craig, PS
52 1/2 North Main Street
Mansfield, Ohio 44902
419-525-3644 Fax 419-525-3696
www.seilerandcraig.com

SURVEY DESCRIPTION

PARCEL "B"

PART OF LOT #371, and
PART OF LOT #372
CITY OF MANSFIELD, OHIO

Situated in the City of Mansfield, County of Richland, State of Ohio and being a part of Lot #371, and a part of Lot #372 of the consecutively numbered lots in said city, the entire tract being more particularly described as follows:

Beginning for the same at a drill hole in concrete set marking the southeast corner of said Lot #372; Thence, North 00 degrees 06 minutes 22 seconds East with the west line of North Main Street, a distance of 63.33 feet to a drill hole in concrete set;

Thence, South 89 degrees 36 minutes 41 seconds West a distance of 125.93 feet to a point as referenced by an iron pin set on a bearing of North 00 degrees 00 minutes 00 seconds East and at a distance of 17.43 feet from said point;

Thence, South 00 degrees 00 minutes 00 seconds East a distance of 63.57 feet to a Mag Nail spike set on the north line of West Sixth Street;

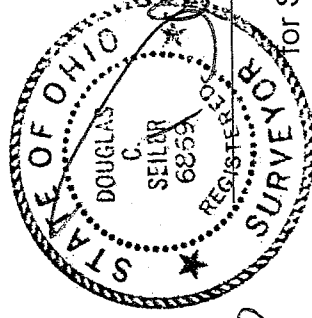
Thence, North 89 degrees 30 minutes 06 seconds East with said north line, a distance of 125.82 feet to the place of beginning, containing 7986 square feet, of which 450 square feet are located within part of said Lot #371, and 7536 square feet are located within part of said Lot #372, according to survey by Douglas C. Seiler Professional Surveyor #6869, on May 23, 2007.

Iron pins set are 5/8" rods with caps stamped "SEILER AND CRAIG INC."

Bearings are based on an assumed meridian and are intended to be used for angular determination only.

NEW SURVEY
OF EXISTING PARCEL
RICHLAND COUNTY
TAX MAP OFFICE

MLB 5-30-07
INITIAL DATE



Douglas C. Seiler PS #6869
for Seiler & Craig Surveying, Inc.

Y-119