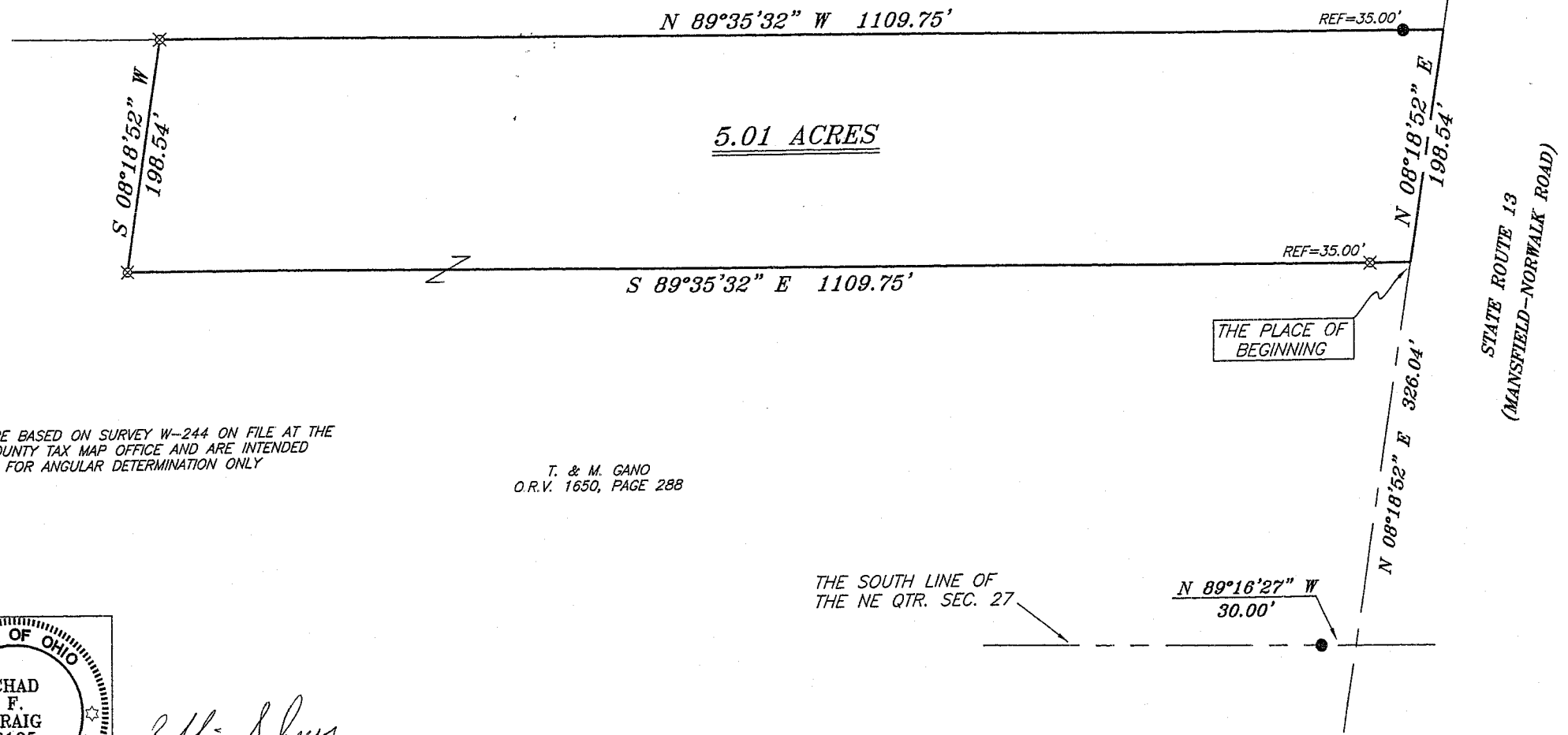
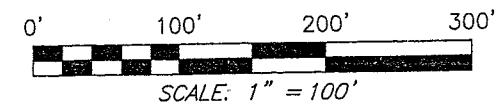


Y-85

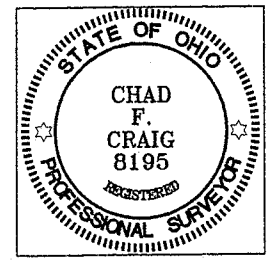
Y-85

M. & A. COTTREL
O.R.V. 1504, PAGE 259



BEARINGS ARE BASED ON SURVEY W-244 ON FILE AT THE RICHLAND COUNTY TAX MAP OFFICE AND ARE INTENDED TO BE USED FOR ANGULAR DETERMINATION ONLY

T. & M. GANO
O.R.V. 1650, PAGE 288



Robbin Scheer
Bloomingsgrove Twp.

LEGEND

- IRON PIN FOUND
- ⊕ MAG NAIL SPIKE SET
- ▲ RAILROAD SPIKE FOUND
- ⊗ 5/8" IRON PIN SET WITH CAP STAMPED "SEILER AND CRAIG, INC."

Chad F. Craig

SURVEY BY: CHAD F. CRAIG P.S. #8195
for SEILER & CRAIG SURVEYING INC.
52-1/2 NORTH MAIN STREET
MANSFIELD, OHIO 44902
(419) 525-3644
FAX (419) 525-3696

NEW SPLIT
RICHLAND COUNTY
TAX MAP OFFICE
MLB 5-3-07
INITIAL DATE

SURVEY PLAT FOR	
GANO	
PART NE QTR. SEC. 27, T-23, R-18 BLOOMINGGROVE TOWNSHIP RICHLAND COUNTY, OHIO	
DATE: APRIL 5, 2007	SCALE: 1"=100'
GAN007	

Y-85

SEILER & CRAIG SURVEYING, INC.

Douglas C. Seiler, PS & Chad F. Craig, PS

52 1/2 North Main Street

Mansfield, Ohio 44902

419-525-3644 Fax 419-525-3696

www.seilerandcraig.com

SURVEY DESCRIPTION

**PART OF THE NE QUARTER OF SECTION 27
BLOOMINGGROVE TOWNSHIP
RICHLAND COUNTY, OHIO**

Situated in the Township of Bloominggrove, County of Richland, State of Ohio and being a part of the Northeast Quarter of Section 27, of Township 23 North, Range 18 West, and being more particularly described as follows:

Commencing at the point of intersection of the south line of said quarter section and the centerline of State Route 13 (Mansfield-Norwalk Road), said point being referenced by an iron pin found on a bearing of North 89 degrees 16 minutes 27 seconds West and at a distance of 30.00 feet; Thence, North 08 degrees 18 minutes 52 seconds East with said centerline, a distance of 326.04 feet to a point referenced by an iron pin set on a bearing of North 89 degrees 35 minutes 32 seconds West and at a distance of 35.00 feet, said point being the place of beginning of the parcel herein described;

Thence, continuing North 08 degrees 18 minutes 52 seconds East with said centerline, a distance of 198.54 feet to a point referenced by an iron pin found on a bearing of North 89 degrees 35 minutes 32 seconds West and at a distance of 35.00 feet, said point being the southeast corner of a parcel currently owned by M. and A. Cottrel (deed reference: O.R.V. 1504, Page: 259);

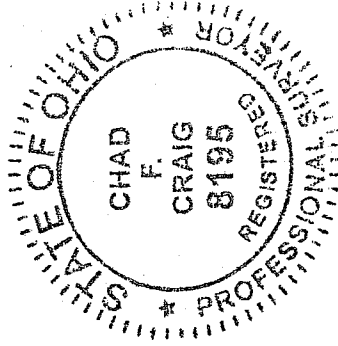
Thence, North 89 degrees 35 minutes 32 seconds West with the south line of said Cottrel parcel and passing through said reference pin, a distance of 1109.75 feet to an iron pin set;

Thence, South 08 degrees 18 minutes 52 seconds West a distance of 198.54 feet to an iron pin set;

Thence, South 89 degrees 35 minutes 32 seconds East passing through an iron pin set for reference at 1074.75 feet, a total distance of 1109.75 feet to the place of beginning, containing 5.01 acres according to survey by Chad F. Craig P.S. #8195 for Seiler & Craig Surveying, Inc. on April 5, 2007.

Iron pins set are 5/8" rods with caps stamped "SEILER AND CRAIG INC".

Bearings are based on survey W-244 on file at the Richland County Tax Map Office and are intended to be used for angular determination only.



Chad F. Craig

Chad F. Craig P.S. #8195
for Seiler & Craig Surveying, Inc.

Robin Adam

Bloominggrove Twp

NEW SPLIT
RICHLAND COUNTY
TAX MAP OFFICE

INITIALS: *MLC* DATE: *5-3-07*