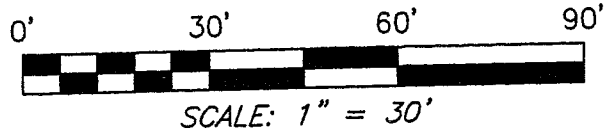
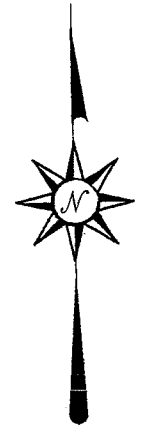


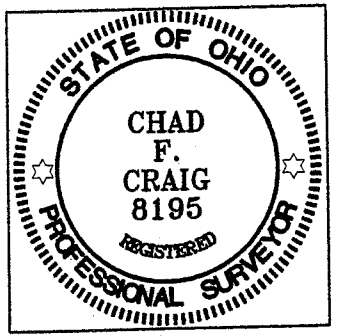
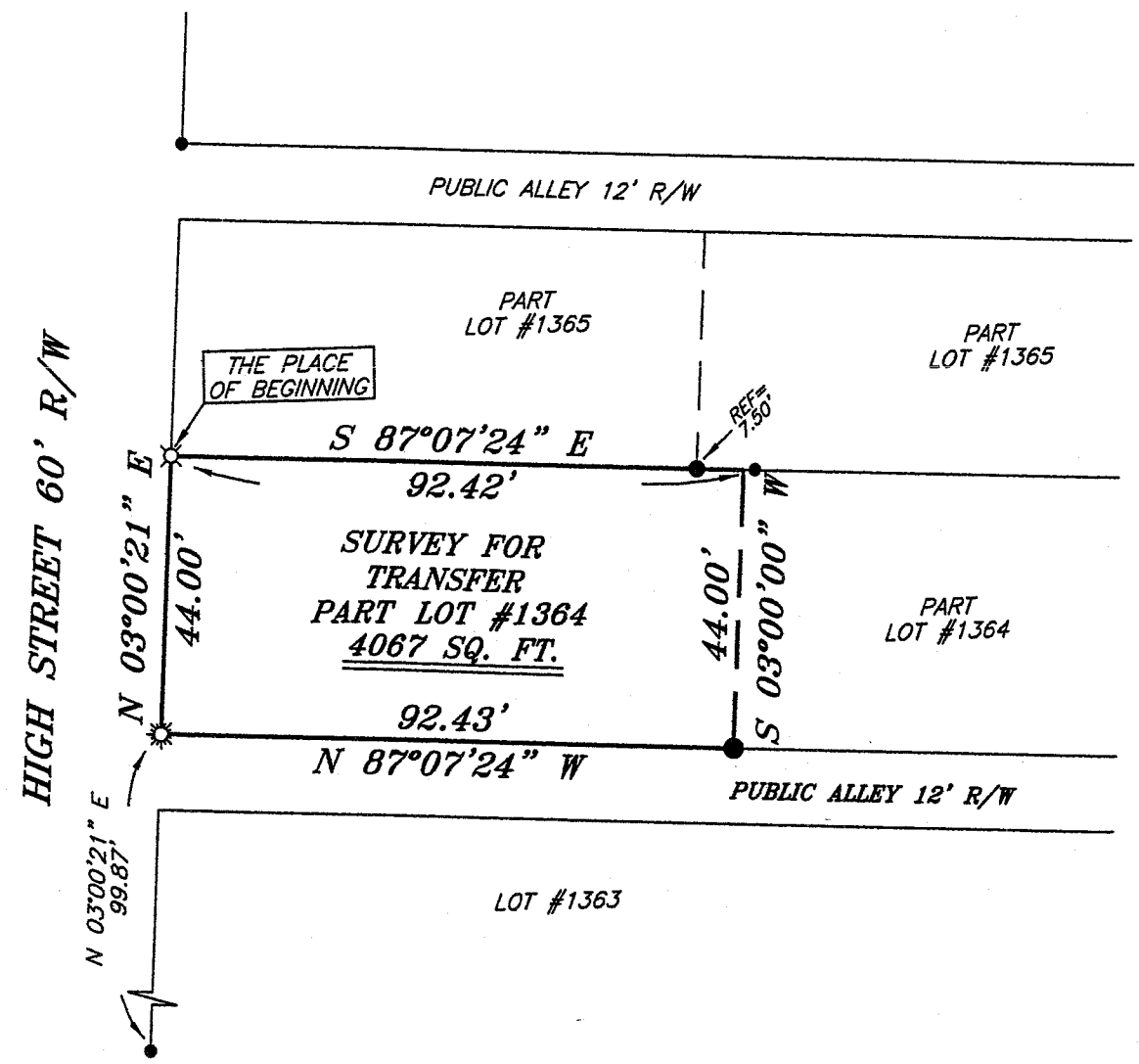
Y-17



NORTH



BEARINGS ARE BASED ON SURVEY D-81 ON FILE AT THE RICHLAND COUNTY TAX MAP OFFICE AND ARE INTENDED TO BE USED FOR ANGULAR DETERMINATION ONLY.



NEW SURVEY
OF EXISTING PARCEL
RICHLAND COUNTY
TAX MAP OFFICE
MB 3-9-07
INITIAL DATE

LEGEND

- IRON PIN FOUND
- ☼ DRILL HOLE IN CONCRETE SET
- ▲ RAILROAD SPIKE FOUND
- ⊗ 5/8" IRON PIN SET WITH CAP STAMPED "SEILER AND CRAIG, INC."

SURVEY PLAT FOR PROPERTY TRANSFER	
PART LOT #1364 CITY OF MANSFIELD RICHLAND COUNTY, OHIO	
DATE: MARCH 6, 2007	SCALE: 1"=30
338HIGH.DWG	

SURVEY BY: *Chad F. Craig*
CHAD F. CRAIG PS #8195
for SEILER & CRAIG SURVEYING INC.
52-1/2 NORTH MAIN STREET
MANSFIELD, OHIO 44902
(419) 525-3644
FAX (419) 525-3696

SEILER & CRAIG SURVEYING, INC.

Douglas C. Seiler, PS & Chad F. Craig, PS
52 1/2 North Main Street
Mansfield, Ohio 44902
419-525-3644 Fax 419-525-3696
www.seilerandcraig.com

SURVEY DESCRIPTION

PART OF LOT # 1364
CITY OF MANSFIELD, OHIO

Situated in the City of Mansfield, County of Richland, State of Ohio and being known as a part of Lot #1364 of the consecutively numbered lots in said city, and being more particularly described as follows:

Beginning for the same at an iron pin set on the northwest corner of said lot; Thence, South 87 degrees 07 minutes 24 seconds East with the north line of said lot, passing through an iron pin found for reference at 84.92 feet, a total distance of 92.42 feet;

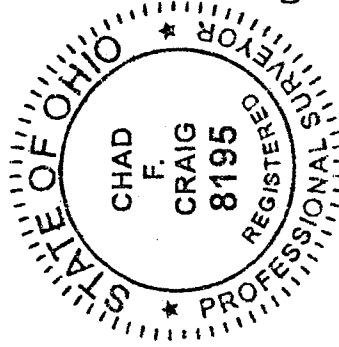
Thence, South 03 degrees 00 minutes 00 seconds West a distance of 44.00 feet to an iron pin found on the south line of said lot;

Thence, North 87 degrees 07 minutes 24 seconds West with said south line, a distance of 92.43 feet to a drill hole set in concrete, the southwest corner thereof;

Thence, North 03 degrees 00 minutes 21 seconds East with said west line, a distance of 44.00 feet to the place of beginning, containing 4067 square feet according to survey by Chad F. Craig P.S. #8195 for Seiler and Craig Surveying, Inc. on March 6, 2007.

Iron pins set are 5/8" rods with caps stamped "SEILER AND CRAIG, INC".

Bearings are based on Survey D-81 on file at the Richland County Tax Map Office and are intended to be used for angular determination only.



Chad F. Craig

Chad F. Craig P.S. #8195

for Seiler and Craig Surveying, Inc.

NEW SURVEY
OF EXISTING PARCEL
RICHLAND COUNTY
TAX MAP OFFICE

MSB 3-9-07
INITIAL DATE

4-17