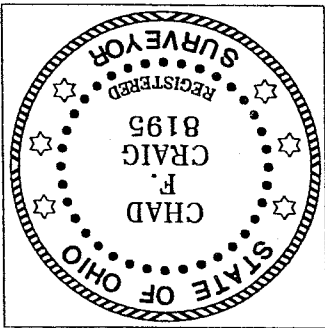
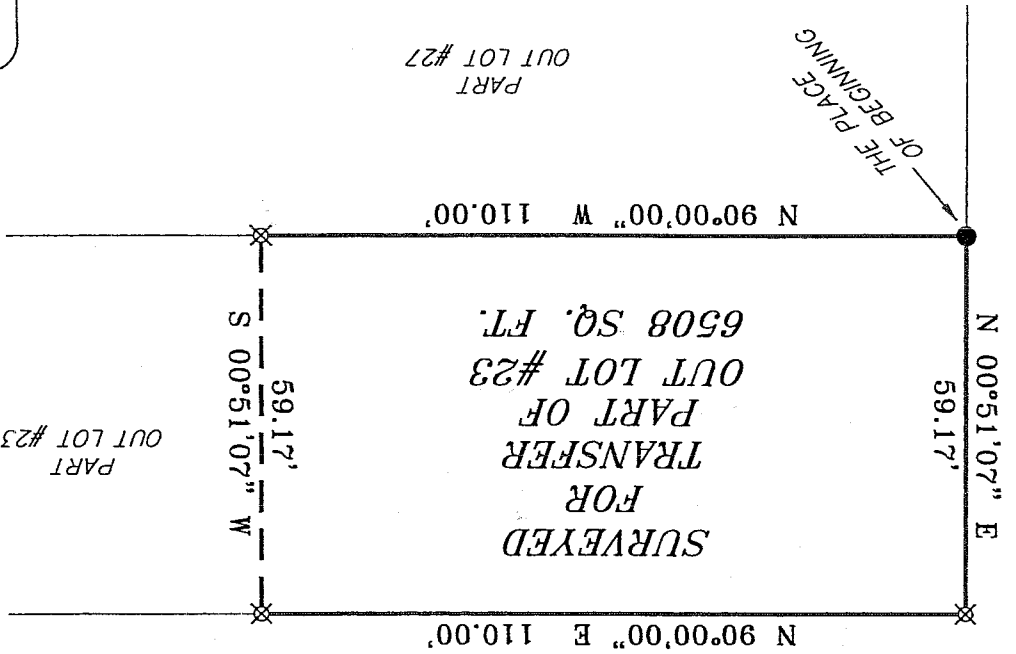


SURVEYED BY: CHAD F. CRAIG, P.S. #8195  
for SELER & CRAIG SURVEYING, INC.  
52-1/2 NORTH MAIN STREET  
MANSFIELD, OHIO 44902  
(419) 525-3644  
FAX (419) 525-3696

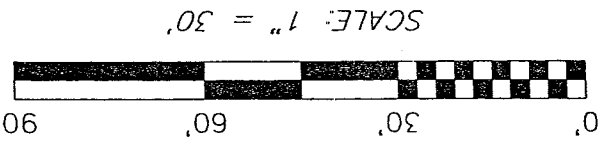
*Chad F. Craig*



SOUTH MAIN STREET  
60' R/W



BRADFORD AVENUE 13' R/W



LEGEND

- IRON PIN FOUND
- ⊗ 5/8" IRON PIN SET WITH CAP "STAMPED" SELER AND CRAIG, INC."

NEW SURVEY  
OF EXISTING PARCEL  
RICHLAND COUNTY,  
TAX MAP OFFICE  
EAK 2/8/05  
DATE INITIAL

SURVEY PLAT FOR
PROPERTY TRANSFER
PART OUT LOT #23
CITY OF MANSFIELD
RICHLAND COUNTY, OHIO
DATE: FEBRUARY 17, 2005
SCALE: 1" = 30'
259MAIN DMC

0-005

U-205

**SEILER & CRAIG SURVEYING, INC.**

Douglas C. Seiler, PS & Chad F. Craig, PS  
52 1/2 North Main Street  
Mansfield, Ohio 44902  
419-525-3644 Fax 419-525-3696  
www.seilerandcraig.com

**SURVEY DESCRIPTION**

PART OF OUT LOT # 23  
CITY OF MANSFIELD, OHIO

Situated in the City of Mansfield, County of Richland, State of Ohio and being known as a part of Out Lot # 23 in said city, and being more particularly described as follows:

Beginning for the same at an iron pin found and accepted as marking the southwest corner of said Out Lot; Thence, North 00 degrees 51 minutes 07 seconds East with the west line of said Out Lot, a distance of 59.17 feet to an iron pin set marking the northwest corner thereof;

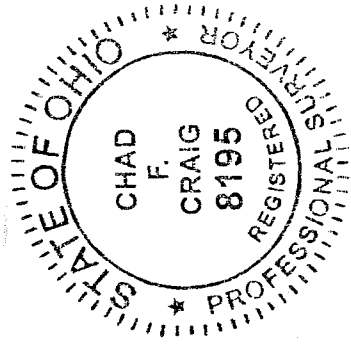
Thence, North 90 degrees 00 minutes 00 seconds East with the north line of said Out Lot, a distance of 110.00 feet to an iron pin set;

Thence, South 00 degrees 51 minutes 07 seconds West a distance of 59.17 feet to an iron pin set on the south line of said out lot;

Thence, North 90 degrees 00 minutes 00 seconds West with said south line, a distance of 110.00 feet to the place of beginning, containing 6508 square feet according to survey by Chad F. Craig Professional Surveyor #8195 for Seiler and Craig Surveying, Inc., on February 17, 2005.

Iron pins set are 5/8" rods with caps stamped "SEILER AND CRAIG, INC."

Bearings are based on an assumed meridian and are intended to be used for angular determination only.



*Chad F. Craig*  
Chad F. Craig PS #8195  
for Seiler & Craig Surveying, Inc.

NEW SURVEY  
OF EXISTING PARCEL  
RICHLAND COUNTY  
TAX MAP OFFICE

FCW 2-28-05  
INITIAL DATE