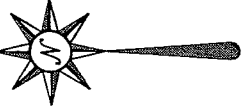


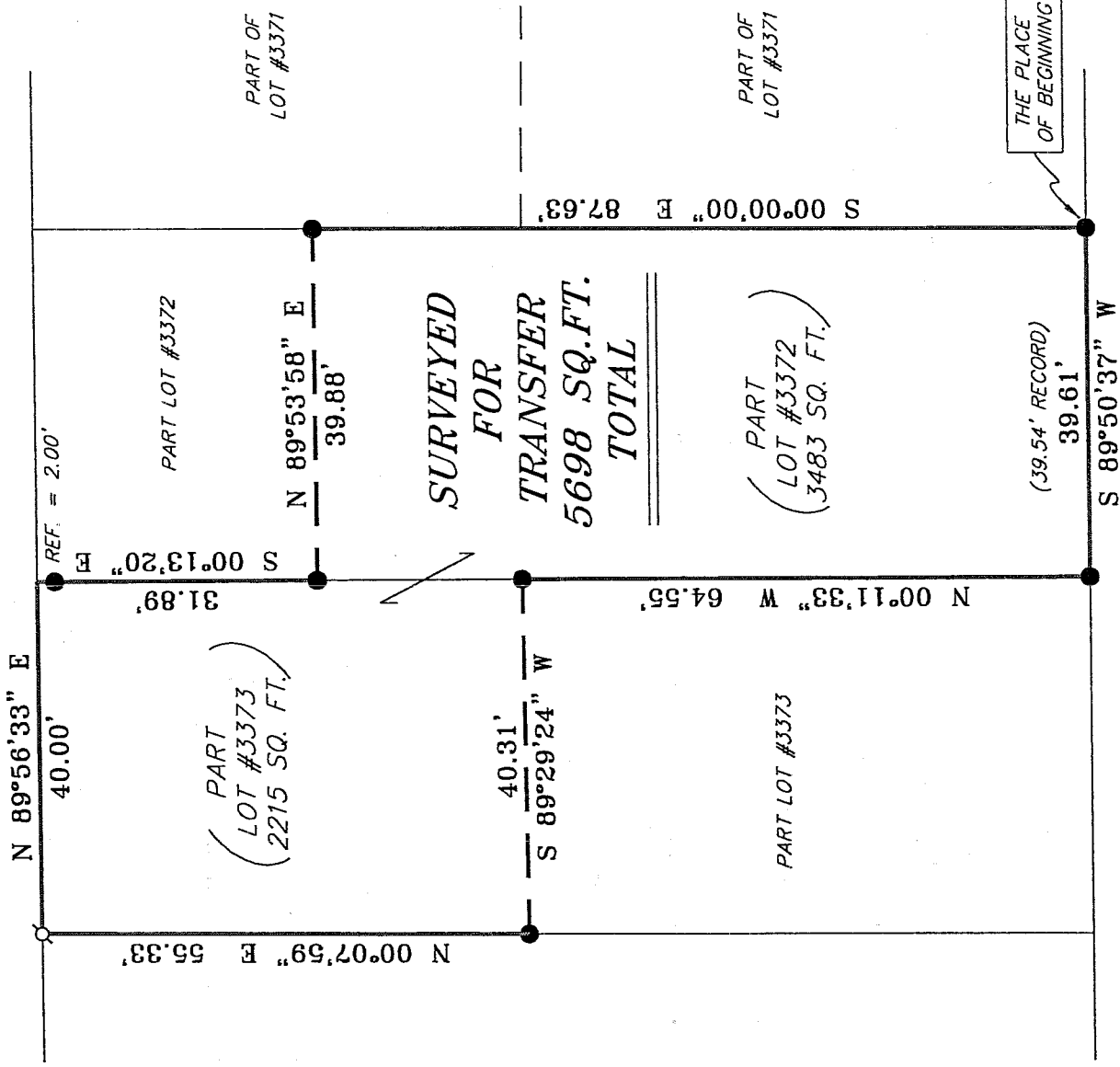
ANORON



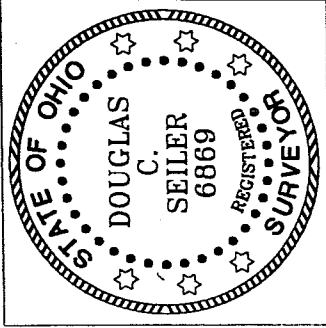
BEARINGS ARE BASED ON AN ASSUMED MERIDIAN AND ARE INTENDED TO BE USED FOR ANGULAR DETERMINATION ONLY.



WILLIAMS AVENUE  
16.5' R/W



WEST ARCH STREET 16' R/W



NEW SURVEY OF EXISTING PARCEL RICHLAND COUNTY TAX MAP OFFICE

INITIAL DATE  
DWS 2-25-05

LEGEND

- IRON PIN FOUND
- ⊕ MAG NAIL SPIKE SET

SURVEYED BY: DOUGLAS C. SEILER P.S. #68869  
for SEILER & CRAIG SURVEYING, INC.  
52-172 NORTH MAIN STREET  
MANSFIELD, OHIO 44902  
(419) 525-3644  
FAX (419) 525-3696

SURVEY PLAT FOR
PROPERTY TRANSFER
PART LOT #3372 & PART LOT #3373
CITY OF MANSFIELD
RICHLAND COUNTY, OHIO
DATE: FEBRUARY 15, 2005 SCALE: 1"=20'
32WARCH.DWG

U-202

U-202

**SEILER & CRAIG SURVEYING, INC.**

Douglas C. Seiler, PS & Chad F. Craig, PS  
52 1/2 North Main Street  
Mansfield, Ohio 44902  
419-525-3644 Fax 419-525-3696  
www.seilerandcraig.com

**SURVEY DESCRIPTION**

PART OF LOT #3373 and  
PART OF LOT #3372  
CITY OF MANSFIELD, OHIO

Situated in the City of Mansfield, County of Richland, State of Ohio and being known as a part of Lot #3372 and a part of Lot #3373 of the consecutively numbered lots in said city, and being more particularly described as follows:

Beginning for the same at an iron pin found and accepted as marking the southeast corner of said Lot #3372; Thence, South 89 degrees 50 minutes 37 seconds West with the south line of said lot, a distance of 39.61 feet (record distance 39.54 feet) to an iron pin found and accepted as marking the southwest corner of said lot;

Thence, North 00 degrees 11 minutes 33 seconds West with the west line of said lot, a distance of 64.55 feet to an iron pin found;

Thence, South 89 degrees 29 minutes 24 seconds West a distance of 40.31 feet to an iron pin found on the west line of said Lot #3373;

Thence, North 00 degrees 07 minutes 59 seconds East with said west line, a distance of 55.33 feet to a Mag Nail spike set marking the northwest corner of said lot;

Thence, North 89 degrees 56 minutes 33 seconds East with the north line of said lot, a distance of 40.00 feet to the northeast corner thereof, as referenced by an iron pin found on a bearing of South 00 degrees 13 minutes 20 seconds East and at a distance of 2.00 feet from said corner;

Thence, South 00 degrees 13 minutes 20 seconds East with the east line of said lot, passing through an iron pin found for reference at 2.00 feet, a total distance of 31.89 feet to an iron pin found;

Thence, North 89 degrees 53 minutes 58 seconds East a distance of 39.88 feet to an iron pin found on the east line of said Lot #3372;

Thence, South 00 degrees 00 minutes 00 seconds East with said east line, a distance of 87.63 feet to the place of beginning, containing a total of 5698 square feet, of which 2215 square feet are located within part of said Lot #3373, and 3483 square feet are located within part of said Lot #3372, according to survey by Douglas C. Seiler, Professional Surveyor #6869 for Seiler and Craig Surveying, Inc., on February 15, 2005.

Iron pins set are 5/8" rods with caps stamped "SEILER AND CRAIG, INC."

Bearings are based on an assumed meridian and are intended to be used for angular determination only.

NEW SURVEY  
OF EXISTING PARCEL  
RICHLAND COUNTY  
TAX MAP OFFICE

EAK INITIAL  
2.15.05 DATE

