



RICHLAND ENGINEERING LIMITED

29 North Park Street, Mansfield, Ohio 44902-1769 • 419/524-0074 FAX 419/524-1812

105001

DESCRIPTION FOR THE CITY OF MANSFIELD January 19, 2005

Situated in the City of Mansfield, County of Richland, State of Ohio and being part of the Northeast Quarter of Section 9, Township 21, Range 18 and being more particularly described as follows:

Commencing at a 1 inch iron pin found at the southwest corner of the Northeast Quarter of Section 9;

Thence North 88°40'05" East along the south line of Northeast Quarter of Section 9, a distance of 225.01 feet to a survey marker found at the southwest corner of land now or formerly owned by the City of Mansfield as recorded in Official Record Volume 502, Page 90 of the Richland County Recorder's records;

Thence North 00°35'52" West along the west line of said City of Mansfield lands, a distance of 221.34 feet to a survey marker found;

Thence South 89°24'08" West along a south line of said City of Mansfield lands, a distance of 75.00 feet to a survey marker found;

Thence North 00°35'52" West along the west line of said City of Mansfield lands, a distance of 120.59 feet to a survey marker set;

Thence North 89°24'08" East a distance of 302.40 feet to a survey marker set on the east line of said City of Mansfield lands and the west line of lands now or formerly owned by Mansfield Railroad Inc. as recorded in Official Record Volume 1408, Page 724 of the Richland County Recorder's records;

Thence South 21°42'21" West along the east line of said City of Mansfield lands and the west line of said Mansfield Railroad Inc. lands, a distance of 313.05 feet to a survey marker found;

Thence South 48°42'21" West continuing along the east line of said City of Mansfield lands and the west line of said Mansfield Railroad Inc. lands, a distance of 79.26 feet to a survey marker found on the south line of Northeast Quarter of Section 9;

Thence South 88°40'05" West along the south line of the Northeast Quarter of Section 9, a distance of 48.50 feet to the survey marker found at the point of beginning, and containing 1.418 acres of land more or less, subject to all highways, easements, and use restrictions of record.

U-176

U-176

105001

DESCRIPTION
FOR
THE CITY OF MANSFIELD
January 19, 2005

The Grantees, his heirs and assigns do hereby covenant and agree that the parcel of land described in this instrument or any portion thereof does not constitute a principal building site under applicable zoning and will not be conveyed by said grantees, heirs and assigns independent and separate from any adjoining or contiguous parcel fronting on a public highway or street.

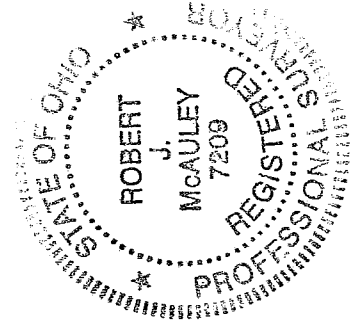
This description is based upon an actual field survey made by Richland Engineering Limited. All bearings are based on the east line of the Northeast Quarter of Section 9 bearing being South 00°36'15" East as called for in Plat Book Volume 26, Page 114 and are for the determination of angular measurement only.

Survey markers set and found are 5/8 inch diameter by 30 inch long rebar with a plastic cap stamped "RICHLAND ENG. 7209".

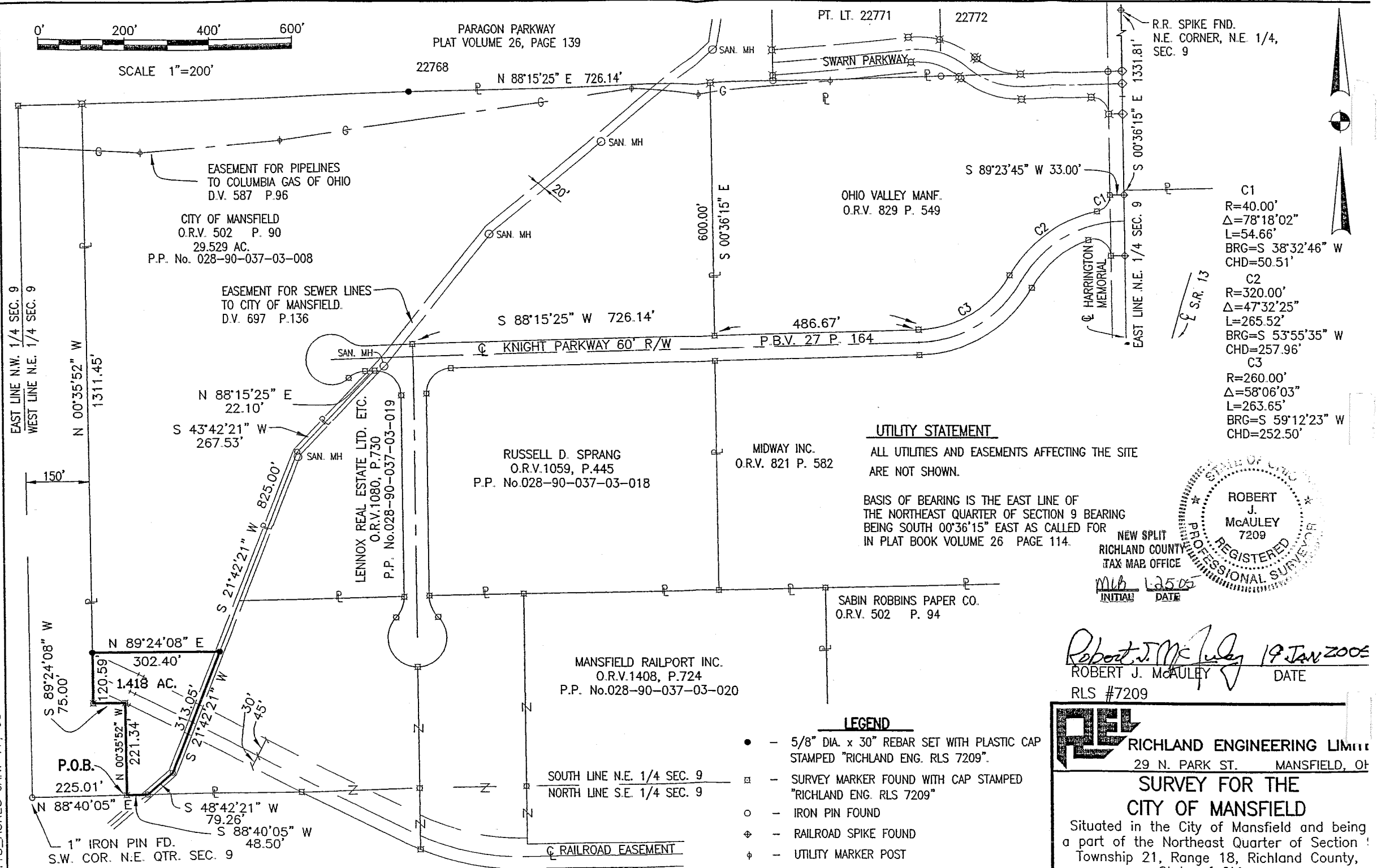
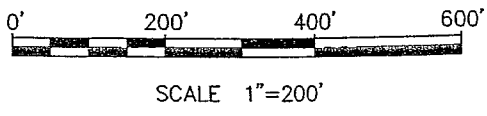
Deed Reference: Official Record Volume 502, Page 90

NEW SPLIT
RICHLAND COUNTY
TAX MAE OFFICE
MLB 1-25-05
INITIAL DATE

Robert J. McAuley 19 Jan 2005
Robert J. McAuley Date
P. S. No. 7209



U-176



R.R. SPIKE FND.
N.E. CORNER, N.E. 1/4,
SEC. 9

EASEMENT FOR PIPELINES
TO COLUMBIA GAS OF OHIO
D.V. 587 P.96

CITY OF MANSFIELD
O.R.V. 502 P. 90
29.529 AC.
P.P. No. 028-90-037-03-008

EASEMENT FOR SEWER LINES
TO CITY OF MANSFIELD.
D.V. 697 P.136

RUSSELL D. SPRANG
O.R.V.1059, P.445
P.P. No.028-90-037-03-018

MIDWAY INC.
O.R.V. 821 P. 582

SABIN ROBBINS PAPER CO.
O.R.V. 502 P. 94

MANSFIELD RAILPORT INC.
O.R.V.1408, P.724
P.P. No.028-90-037-03-020

UTILITY STATEMENT

ALL UTILITIES AND EASEMENTS AFFECTING THE SITE
ARE NOT SHOWN.

BASIS OF BEARING IS THE EAST LINE OF
THE NORTHEAST QUARTER OF SECTION 9 BEARING
BEING SOUTH 00°36'15" EAST AS CALLED FOR
IN PLAT BOOK VOLUME 26 PAGE 114.

ROBERT
J.
MCAULEY
7209

NEW SPLIT
RICHLAND COUNTY
TAX MAP OFFICE

MLB 12505
INITIAL DATE

Robert J. McAuley 19 Jan 2006
ROBERT J. MCAULEY DATE
RLS #7209

LEGEND

- - 5/8" DIA. x 30" REBAR SET WITH PLASTIC CAP STAMPED "RICHLAND ENG. RLS 7209".
- - SURVEY MARKER FOUND WITH CAP STAMPED "RICHLAND ENG. RLS 7209"
- - IRON PIN FOUND
- ◆ - RAILROAD SPIKE FOUND
- ⊕ - UTILITY MARKER POST

RICHLAND ENGINEERING LIMITED
29 N. PARK ST. MANSFIELD, OH

**SURVEY FOR THE
CITY OF MANSFIELD**

Situated in the City of Mansfield and being
a part of the Northeast Quarter of Section 9,
Township 21, Range 18, Richland County,

- C1
R=40.00'
Δ=78°18'02"
L=54.66'
BRG=S 38°32'46" W
CHD=50.51'
- C2
R=320.00'
Δ=47°32'25"
L=265.52'
BRG=S 53°55'35" W
CHD=257.96'
- C3
R=260.00'
Δ=58°06'03"
L=263.65'
BRG=S 59°12'23" W
CHD=252.50'

S.R. 13

EAST LINE N.W. 1/4 SEC. 9
WEST LINE N.E. 1/4 SEC. 9

N 00°35'52" W
1311.45'

S 89°24'08" W
75.00'

N 89°24'08" E
302.40'

N 00°35'52" W
221.34'

S 21°42'21" W
313.05'

S 21°42'21" W
825.00'

S 43°42'21" W
267.53'

N 88°15'25" E
22.10'

S 48°42'21" W
79.26'

S 88°40'05" W
48.50'

1" IRON PIN FD.
S.W. COR. N.E. QTR. SEC. 9

LENNOX REAL ESTATE LTD, ETC.
O.R.V.1080, P.730
P.P. No.028-90-037-03-019

S 88°15'25" W 726.14'

KNIGHT PARKWAY 60' R/W

P.B.V. 27 P. 164

S 89°23'45" W 33.00'

OHIO VALLEY MANF.
O.R.V. 829 P. 549

EAST LINE N.E. 1/4 SEC. 9

SOUTH LINE N.E. 1/4 SEC. 9
NORTH LINE S.E. 1/4 SEC. 9

RAILROAD EASEMENT