

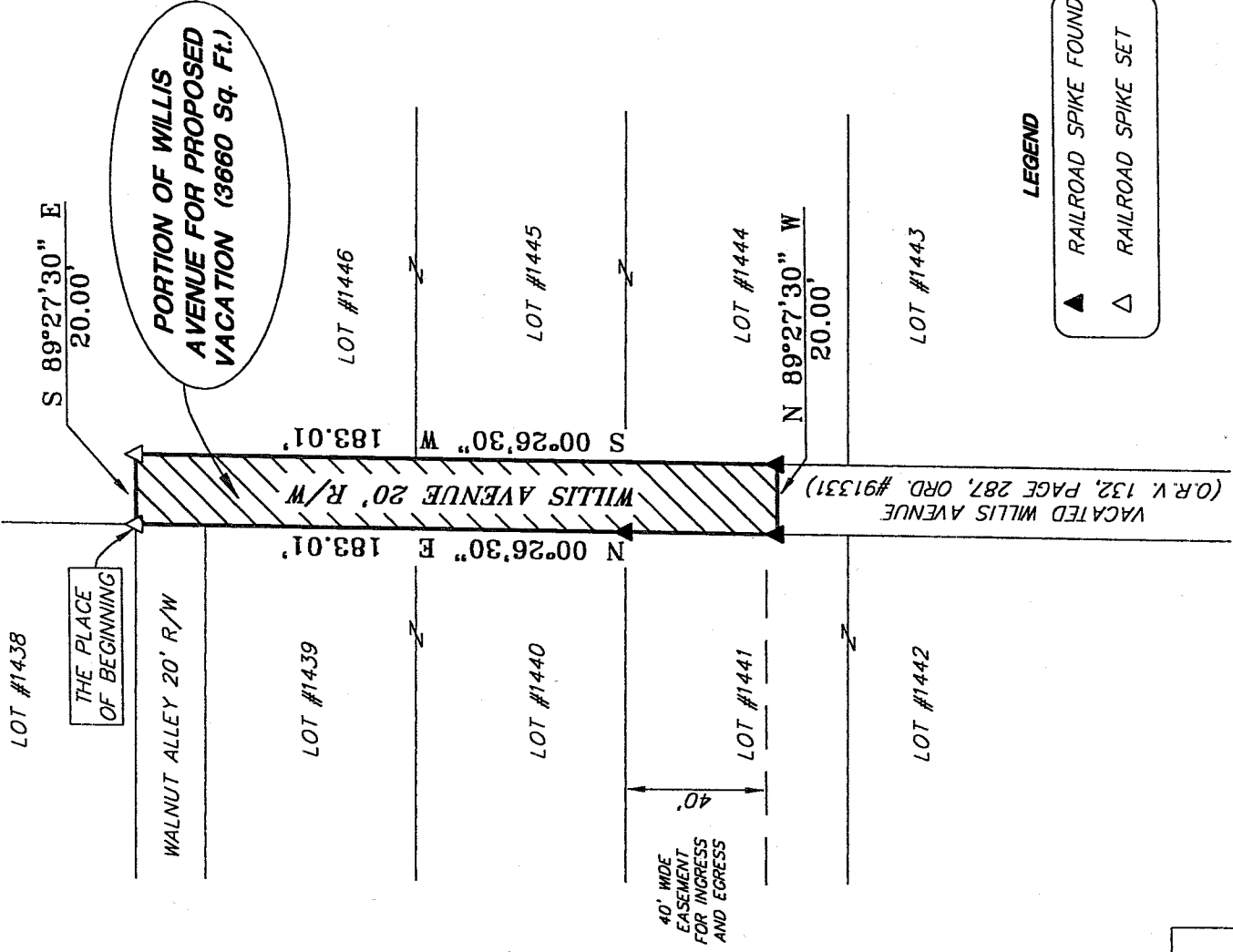
NORTH



BEARINGS ARE BASED ON AN ASSUMED MERIDIAN AND ARE INTENDED TO BE USED FOR ANGULAR DETERMINATION ONLY.



SCALE: 1" = 50'

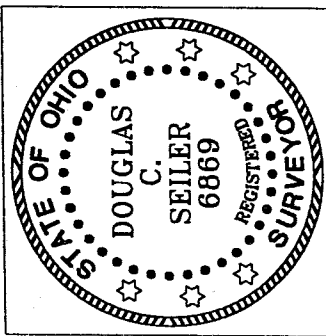


PORTION OF WILLIS AVENUE FOR PROPOSED VACATION (3660 Sq. Ft.)

(3660 SQ. FT.)

LEGEND

- ▲ RAILROAD SPIKE FOUND
- △ RAILROAD SPIKE SET



NEW SURVEY
 OF EXISTING PARCEL
 RICHLAND COUNTY
 TAX MAP OFFICE

MLB 1-19-05
 INITIAL DATE

Douglas C. Seiler

PREPARED BY: DOUGLAS C. SEILER PS #6869
 for SEILER & CRAIG SURVEYING, INC.
 52-172 NORTH MAIN STREET
 MANSFIELD, OHIO 44902
 (419) 525-3644
 FAX (419) 525-3696

SURVEY PLAT FOR PROPOSED VACATION OF PART OF WILLIS AVENUE	
CITY OF MANSFIELD OHIO	
DATE: JANUARY 5, 2005	SCALE: 1"=50'
ROBHEAT.DWG	

U-172

SEILER & CRAIG SURVEYING, INC.

Douglas C. Seiler, PS & Chad F. Craig, PS
52 1/2 North Main Street
Mansfield, Ohio 44902
419-525-3644 Fax 419-525-3696
www.seilerandcraig.com

SURVEY DESCRIPTION

**PART OF WILLIS AVENUE
FOR A PROPOSED VACATION**

Situated in the City of Mansfield, County of Richland, State of Ohio and being a portion of Willis Avenue to be vacated, said portion being more particularly described as follows:

Beginning for the same at a railroad spike set marking the southeast corner of Lot #1438 of the consecutively numbered lots in said city; Thence, South 89 degrees 27 minutes 30 seconds East with the north line of said Willis Avenue, a distance of 20.00 feet to a railroad spike set;

Thence, South 00 degrees 26 minutes 30 seconds West with the east line of said Willis Avenue, a distance of 183.01 feet to a railroad spike found and accepted as marking the northeasterly corner of previously vacated Willis Avenue (reference: ORV 132, P. 287);

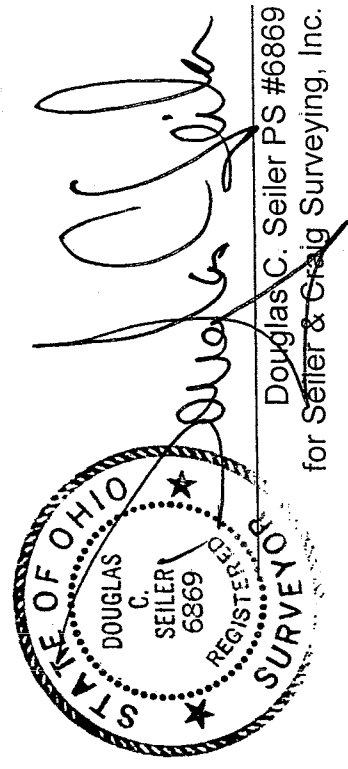
Thence, North 89 degrees 27 minutes 30 seconds West with the north line of said vacated Willis Avenue, a distance of 20.00 feet to a railroad spike found and accepted as marking the northwesterly corner thereof;

Thence, North 00 degrees 26 minutes 30 seconds East, with the west line of said Willis Avenue, passing through a railroad spike found at 43.01 feet, a total distance of 183.01 feet to the place of beginning, containing 3660 square feet according to survey by Douglas C. Seiler Professional Surveyor #68869 for Seiler & Craig Surveying, Inc. on January 5, 2005.

Iron pins set are 5/8" rods with caps stamped "SEILER AND CRAIG INC".

Bearings are based on an assumed meridian and are intended to be used for angular determination only.

NEW SURVEY
OF EXISTING PARCEL
RICHLAND COUNTY
TAX MAP OFFICE
MIB 1-19-05
DATE



Douglas C. Seiler PS #68869
for Seiler & Craig Surveying, Inc.