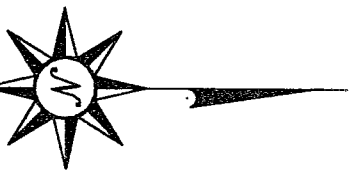
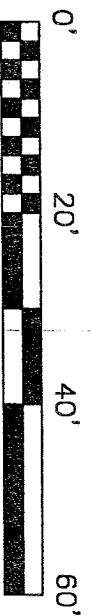


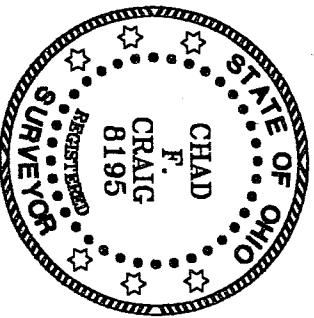
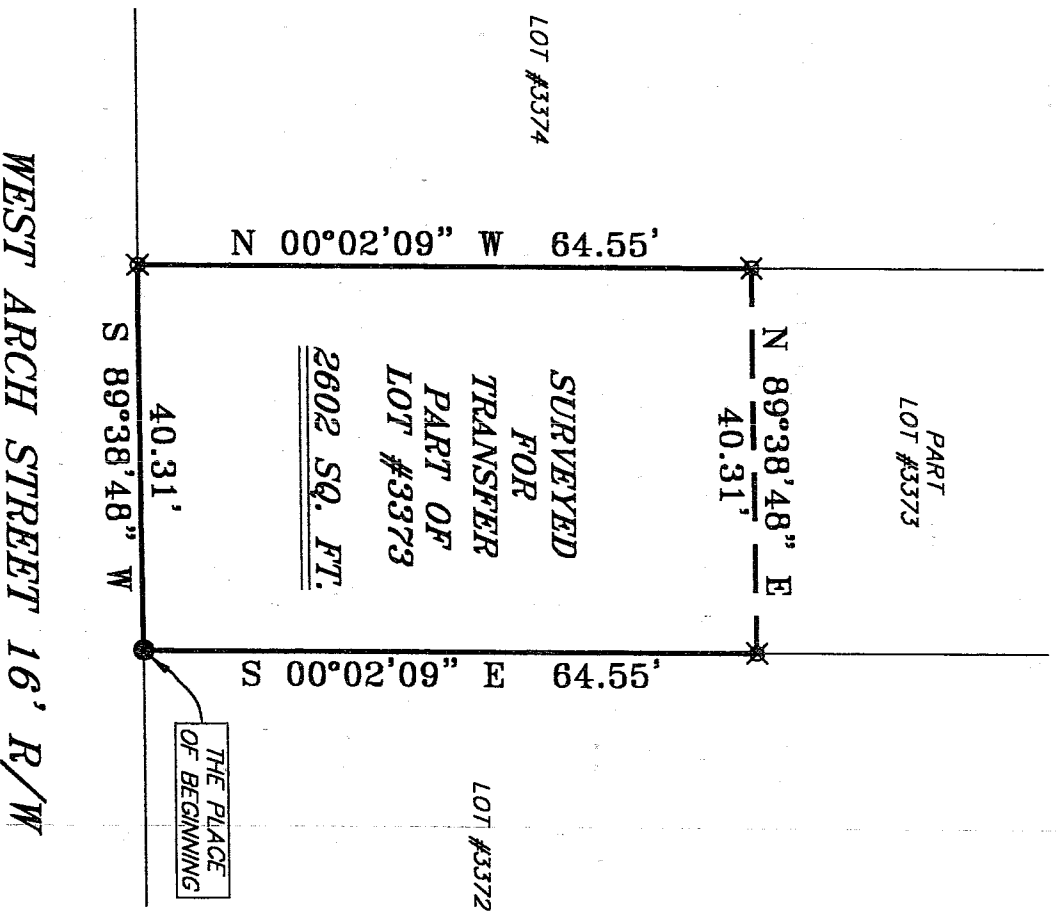
NORTH



BEARINGS ARE BASED ON AN ASSUMED MERIDIAN AND ARE INTENDED TO BE USED FOR ANGULAR DETERMINATION ONLY.



SCALE: 1" = 20'



NEW SURVEY
OF EXISTING PARCEL
RICHLAND COUNTY
TAX MAP OFFICE

MB 11.22.04
INITIAL DATE

- LEGEND
- IRON PIN FOUND
 - ✕ 5/8" IRON PIN SET WITH CAP STAMPED "SEILER AND CRAIG INC."

Chad F. Craig

SURVEYED BY: CHAD F. CRAIG P.S.#8195
FOR SELLER & CRAIG SURVEYING, INC.
52-1/2 NORTH MAIN STREET
MANSFIELD, OHIO 44902

PHONE (419) 525-3644
FAX (419) 525-3696

SURVEY PLAT FOR
PROPERTY TRANSFER
PART LOT #3373
CITY OF MANSFIELD
RICHLAND COUNTY, OHIO
DATE: NOVEMBER 15, 2004
SCALE: 1"=20'
34ARCH DWG



SEILER & CRAIG SURVEYING, INC.

Douglas C. Seiler, PS & Chad F. Craig, PS
52 1/2 North Main Street
Mansfield, Ohio 44902
419-525-3644 Fax 419-525-3696
www.seilerandcraig.com

SURVEY DESCRIPTION

PART OF LOT # 3373
CITY OF MANSFIELD, OHIO

Situated in the City of Mansfield, County of Richland, State of Ohio and being known as a part of Lot #3373 of the consecutively numbered lots in said city, and being more particularly described as follows:

Beginning for the same at an iron pin found and accepted as marking the southeast corner of said lot; Thence, South 89 degrees 38 minutes 48 seconds West with the south line of said lot a distance of 40.31 feet to an iron pin set marking the southwest corner of said lot;

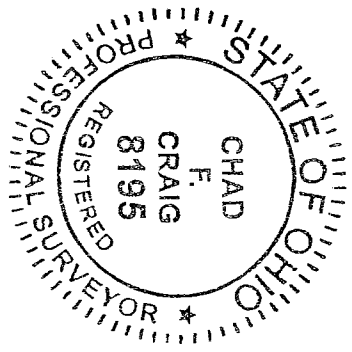
Thence, North 00 degrees 02 minutes 09 seconds West with the west line of said lot, a distance of 64.55 feet to an iron pin set;


Thence, North 89 degrees 38 minutes 48 seconds East a distance of 40.31 feet to an iron pin set on the east line of said lot;

Thence, South 00 degrees 02 minutes 09 seconds East with said east line, a distance of 64.55 feet to the place of beginning, containing 2602 square feet according to survey by Chad F. Craig Professional Surveyor #8195 for Seiler & Craig Surveying, Inc. on November 15, 2004.

Iron pins set are 5/8" rods with caps stamped "SEILER AND CRAIG INC".

Bearings are based on an assumed meridian and are intended to be used for angular determination only.




Chad F. Craig, P.S. #68869
for Seiler & Craig Surveying, Inc.

NEW SURVEY
OF EXISTING PARCEL
RICHLAND COUNTY
TAX MAP OFFICE
MB 11-22-04
INITIAL DATE

U-93

U-93