

SURVEY DESCRIPTION

**Parts NW and NE Quarters – Section 36
Madison Township, T-21, R-18
Richland County, Ohio**

Situated in the Township of Madison, County of Richland, State of Ohio, and being parts of the Northwest and Northeast Quarters of Section 36 of Township 21 of Range 18, more particularly described as follows:

Commencing for the same at an iron pin found marking the southeast corner of said northwest quarter; Thence, North 89 degrees 55 minutes 33 seconds West with the south line of said quarter, a distance of 75.22 feet to its intersection with the southeasterly right-of-way line of Interstate 71, referenced by an iron pin found North 40 degrees 59 minutes 47 seconds East, a distance of 4.75 feet, the Place of Beginning;

Thence, continuing with said south line North 89 degrees 55 minutes 33 seconds West, passing an iron pin set for reference at 977.87 feet, a distance of 1002.87 feet to an iron pin found marking its intersection with the centerline of Sites Road (T.H. 315);

Thence, North 06 degrees 24 minutes 16 seconds East with said centerline, a distance of 29.68 feet to the southwest corner of a parcel owned by G. & M. Singer (ORV 240/556);

Thence, South 89 degrees 33 minutes 47 seconds East, passing an iron pin set for reference at 25.00 feet, a distance of 380.00 feet to an iron pin set marking the southeast corner of a parcel owned by K. Schnuerer (830/32);

Thence, North 06 degrees 24 minutes 16 seconds East, a distance of 380.00 feet to an iron pin set marking the northeast corner of said parcel;

Thence, North 89 degrees 33 minutes 47 seconds West, passing an iron pin found for reference at 355.12 feet, a distance of 380.00 feet to a point on the said Sites Road centerline;

Thence, North 06 degrees 24 minutes 16 seconds East with said centerline, a distance of 73.60 feet to an iron pin set thereon;

Thence, continuing with said centerline North 44 degrees 01 minutes 16 seconds East, a distance of 31.70 feet to the southwest corner of a parcel owned by S. Eddy (ORV 998/476);

Thence, South 65 degrees 30 minutes 07 seconds East, passing an iron pin set for reference at 30.00 feet, a distance of 86.50 feet to a Drill hole set;

Thence, South 89 degrees 40 minutes 33 seconds East, a distance of 136.20 feet to an iron pin set marking the southeast corner of said parcel;

Thence, North 44 degrees 01 minutes 16 seconds East, a distance of 265.30 feet to an iron pin set marking the northeasterly corner of a parcel owned by R. & M. Loughman (860/23);

Thence, North 45 degrees 58 minutes 44 seconds West with the northerly line of said parcel, passing an iron pin set for reference at 145.00 feet, a distance of 180.00 feet to a point on the said Sites Road centerline;

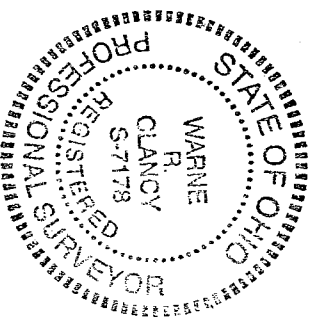
Thence, North 44 degrees 01 minutes 16 seconds East with said centerline, a distance of 34.72 feet to the southwesterly corner of a parcel owned by A. Johnson (ORV 559/124);

Thence, South 54 degrees 13 minutes 45 seconds East with the southerly line of said parcel, passing iron pins set for reference at 35.00 feet and 666.70 feet, a distance of 884.67 feet to a point on the centerline of said Interstate 71;

Thence, South 54 degrees 30 minutes 20 seconds East, a distance of 201.55 feet to an iron pin set on the southerly right-of-way line of said I-71;

Thence, South 54 degrees 59 minutes 06 seconds West with said right-of-way line, a distance of 303.92 feet to the Place of Beginning, containing 9.702 acres, of which 9.231 lie in the said part of the northwest quarter and 0.471 in the said part of the northeast quarter according to survey by Warne R. Clancy, Professional Surveyor #71178 on September 24, 2004 but subject to all legal highways and easements of record.

NEW SPLIT
RHIGHLAND COUNTY
TAX MAP OFFICE
EAK
INITIAL
11-10-04
DATE



Warne R. Clancy
Warne R. Clancy
P.S. 71178

U-69

1-10-04

Id	Bearing	Distance
L1	N 89°55'33" W	75.22
L2	N 6°24'16" E	29.68
L3	N 6°24'16" E	73.60
L4	N 44°01'16" E	31.70
L5	S 65°30'07" E	86.50
L6	N 44°01'16" E	34.72

LEGEND

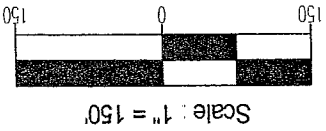
- Iron pin set with cap stamped "CLANCY 7178"
- Iron pin found



Warne R. Clancy
P.S. #178

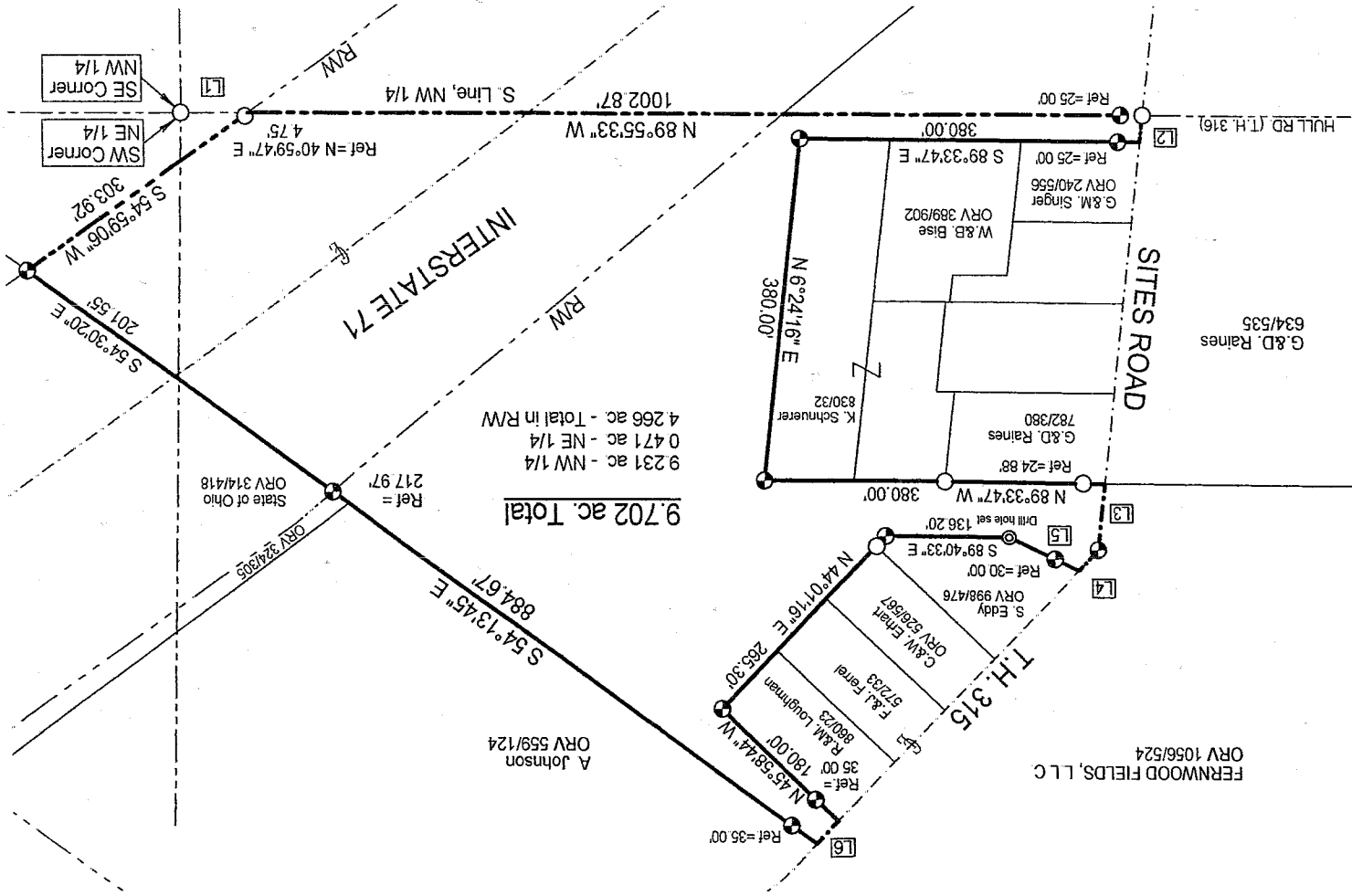
NEW SPLIT
RICHLAND COUNTY
TAX MAP OFFICE
DATE: 10-20-04
INITIAL: EW

Bearings are based on
RIC-71-14-47



Parts NW and NE Quarters - Section 36
Madison Township, T-21, R-18
Richland County, Ohio

SURVEY PLAT



G.&D. Raines
634/535

FERNWOOD FIELDS, L.L.C.
ORV 1056/524

A Johnson
ORV 559/124

Ref. = 35.00
N 45°58'44" W
880.23
R.M. Loughman
57233
F.R. Ferrel
5261587
C.M. Ehart
ORV 998/476
S. Eddy
Ref. = 30.00
S 89°40'33" E
136.20'
Drill hole set

Ref. = 24.88
G.&D. Raines
782/380
W.&B. Bise
ORV 389/902
G.&M. Singer
ORV 240/556
S 89°33'47" E
Ref. = 25.00
380.00'
N 6°24'16" E
380.00'

Ref. = N 40°59'47" E
4.75'
S. Line, NW 1/4
1002.87'
N 89°55'33" W
Ref. = 25.00
380.00'

Ref. = 201.55'
S 54°30'20" E
201.55'
S 54°59'06" W
303.92'
SW Corner
NE 1/4
SE Corner
NW 1/4

State of Ohio
ORV 314/418

Ref. = 217.97'

ORV 324/205

884.67'

S 54°13'45" E

9.702 ac. Total

9.231 ac. - NW 1/4

0.471 ac. - NE 1/4

4.266 ac. - Total in RW

U-9-11

U-169