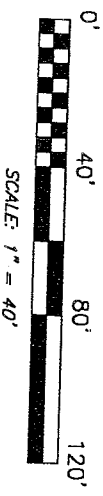


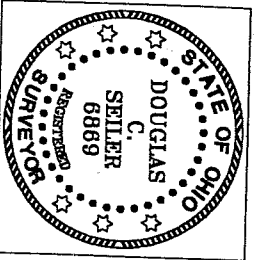
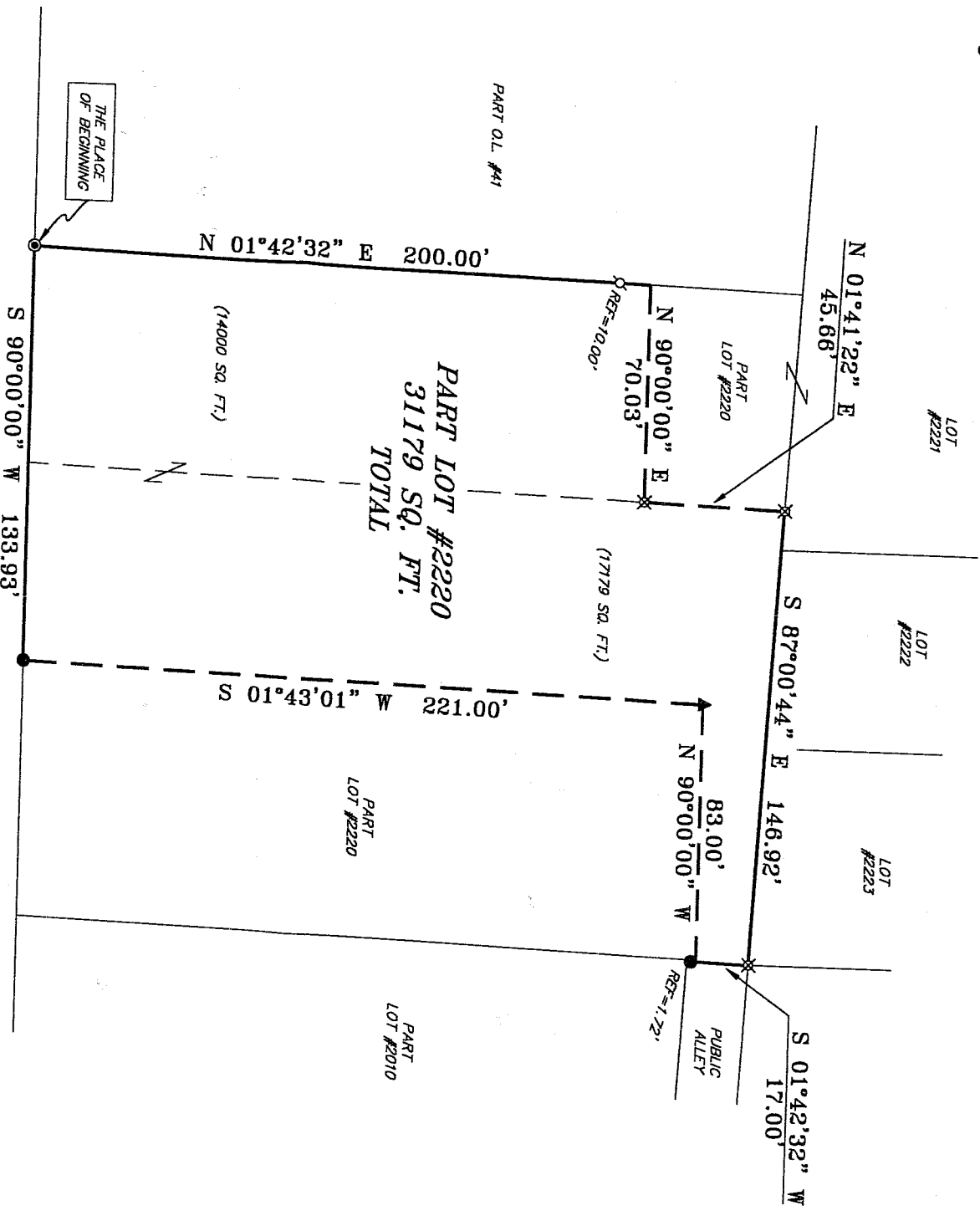


BEARINGS ARE BASED ON AN ASSUMED MERIDIAN AND ARE INTENDED TO BE USED FOR ANGULAR DETERMINATION ONLY.



SCALE: 1" = 40'

PLAT REFERENCE: VOLUME 3, PAGE 11



NEW SURVEY
OF EXISTING PARCEL
RICHLAND COUNTY
TAX MAP OFFICE
DATE: 9-22-04
INITIAL: DCS

- LEGEND**
- IRON PIN FOUND
 - ▲ RR SPIKE FOUND
 - CONCRETE MONUMENT FOUND
 - ⊘ MAG NAIL SPIKE SET
 - ⊗ IRON PIN SET WITH CAP STAMPED
SEILER AND CRAIG, INC.

SURVEYED BY: DOUGLAS C. SEILER P.S. #8869
for SEILER & CRAIG SURVEYING, INC.
52-112 NORTH MAIN STREET
MANSFIELD, OHIO 44902
(419) 525-3644
FAX (419) 525-3696

Douglas C. Seiler
9/22/04

SURVEY PLAT FOR PROPERTY TRANSFER
WAPPNER FUNERAL DIRECTORS

PART LOT #2220
CITY OF MANSFIELD
RICHLAND COUNTY, OHIO

DATE: SEPTEMBER 16, 2004 SCALE: 1"=40'
328PAW.DWG

T-299

T 299

T-299

SELLER & CRAIG SURVEYING, INC.

Douglas C. Seiler, PS & Chad F. Craig, PS
52 1/2 North Main Street
Mansfield, Ohio 44902
419-525-3644 Fax 419-525-3696
www.seilerandcraig.com

SURVEY DESCRIPTION

PART OF LOT # 2220
CITY OF MANSFIELD, OHIO

Situated in the City of Mansfield, County of Richland, State of Ohio and being known as a part of Lot #2220 of the consecutively numbered lots in said city (plat reference: Volume 3, page 11), and being more particularly described as follows:

Beginning for the same at a concrete monument found and accepted as marking the southwest corner of said lot; Thence, North 01 degree 42 minutes 32 seconds East with the west line of said lot, passing through a Mag Nail spike set for reference at 190.00 feet, a total distance of 200.00 feet to an existing property corner;

Thence, North 90 degrees 00 minutes 00 seconds East a distance of 70.03 feet to an iron pin set;

Thence, North 01 degree 41 minutes 22 seconds East a distance of 45.66 feet to an iron pin set on the north line of said lot;

Thence, South 87 degrees 00 minutes 44 seconds East with said north line, a distance of 146.92 feet to an iron pin set on the east line of said lot;

Thence, South 01 degree 42 minutes 32 seconds West with said east line, a distance of 17.00 feet to an existing property corner as referenced by an iron pin found on a bearing of South 01 degree 42 minutes 32 seconds West and at a distance of 1.72 feet from said point;

Thence, North 90 degrees 00 minutes 00 seconds West a distance of 83.00 feet to a railroad spike found;

Thence, South 01 degree 43 minutes 01 second West a distance of 221.00 feet to an iron pin found on the north line of Park Avenue West;

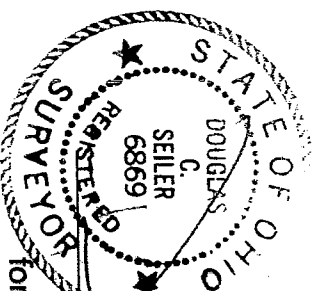
Thence, South 90 degrees 00 minutes 00 seconds West with said north line, a distance of 133.93 feet to the place of beginning, containing 31179 square feet, according to survey by Douglas C. Seiler, Professional Surveyor #6869 for Seiler & Craig Surveying, Inc. on September 15, 2004.

Iron pins set are 5/8" rods with caps stamped "SELLER AND CRAIG INC."

Bearings are based on an assumed meridian and are intended to be used for angular determination only.

NEW SURVEY
OF EXISTING PARCEL
RICHLAND COUNTY
TAX MAP OFFICE

MS 0-22-04
INITIAL DATE



Douglas C. Seiler
Douglas C. Seiler PS 6869
for Seiler & Craig Surveying, Inc.