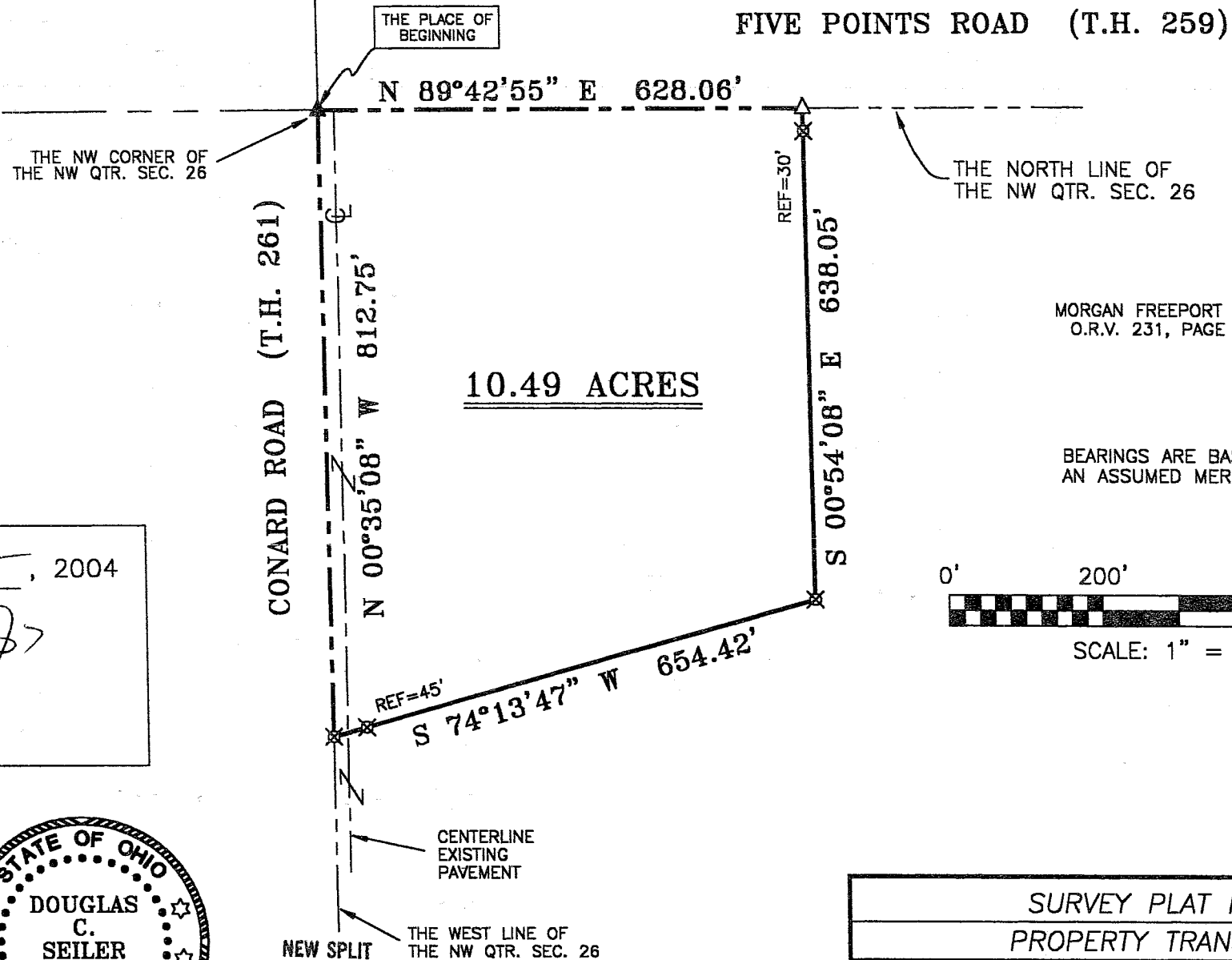


T-241

LEGEND

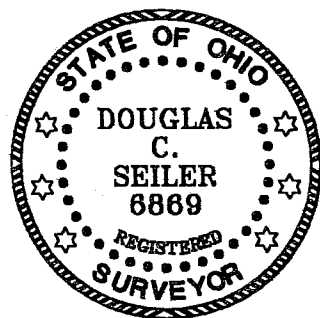
- IRON PIN FOUND
- ▲ RR SPIKE FOUND
- △ RR SPIKE SET
- ⊗ STONE FOUND
- IRON PIN FOUND IN MONUMENT BOX
- ⊙ CONCRETE MONUMENT FOUND
- ⊕ MAG NAIL SPIKE SET
- ⊗ IRON PIN SET WITH CAP STAMPED "SEILER AND CRAIG INC."



APPROVED THIS 21 DAY OF August, 2004

Edwin K (Jake) Layfield

JAKE LAYFIELD
WELLER TOWNSHIP
ZONING INSPECTOR



NEW SPLIT
RICHLAND COUNTY
TAX MAP OFFICE

MB 8/26/04
INITIAL DATE

SURVEYED BY: DOUGLAS C. SEILER PS #6869
FOR SEILER & CRAIG SURVEYING INC.
52-1/2 NORTH MAIN STREET
MANSFIELD, OHIO 44902
(419) 525-3644
FAX (419) 525-3696

SURVEY PLAT FOR PROPERTY TRANSFER	
PART NW QTR. SEC. 26, T-22, R-18 WELLER TOWNSHIP RICHLAND COUNTY, OHIO	
DATE: AUGUST 11, 2004	SCALE: 1"=200'
BRUNER04	

SEILER & CRAIG SURVEYING, INC.

Douglas C. Seiler, PS & Chad F. Craig, PS
52 1/2 North Main Street
Mansfield, Ohio 44902
419-525-3644 Fax 419-525-3696
www.seilerandcraig.com

SURVEY DESCRIPTION

**PART NW QUARTER SECTION 26
WELLER TOWNSHIP
RICHLAND COUNTY, OHIO**

Situated in the Township of Weller, County of Richland, State of Ohio and being a part of the Northwest Quarter of Section 26 of Township 22 North, Range 18 West, and being more particularly described as follows:

Beginning for the same at a railroad spike found and accepted as marking the northwest corner of said quarter; Thence, North 89 degrees 42 minutes 55 seconds East with the north line of said quarter, the same being the centerline of Five Points East Road (Township Highway 259), a distance of 628.06 feet to a railroad spike set;

Thence, South 00 degrees 54 minutes 08 seconds East, passing through an iron pin set for reference at 30.00 feet, a total distance of 638.05 feet to an iron pin set;

Thence, South 74 degrees 13 minutes 47 seconds West, passing through an iron pin set for reference at 609.42 feet, a total distance of 654.42 feet to an iron pin set on the west line of said quarter;

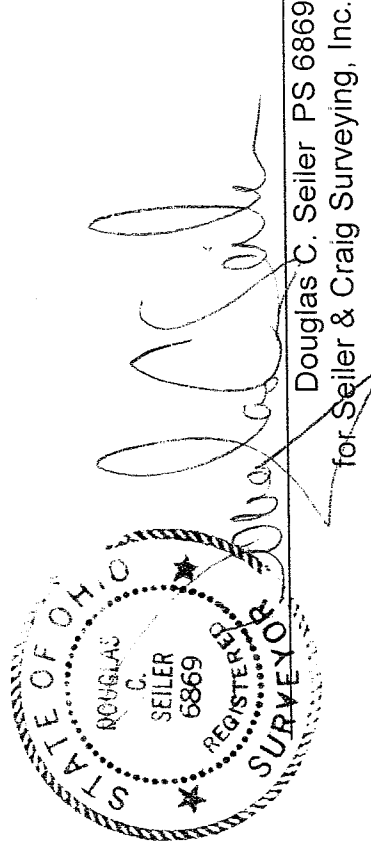
Thence, North 00 degrees 35 minutes 08 seconds West with said west line, and in Conard Road (Township Highway 261), a distance of 812.75 feet to the place of beginning, containing 10.49 acres, according to survey by Douglas C. Seiler, Professional Surveyor #6869 for Seiler & Craig Surveying, Inc., on August 11, 2004, but subject to the rights of way of Conard Road and of Five Points East Road.

Iron pins set are 5/8" rods with caps stamped "SEILER AND CRAIG INC."

Bearings are based on an assumed meridian and are intended to be used for angular determination only.

NEW SPLIT
RICHLAND COUNTY
TAX MAP OFFICE

DCB
INITIAL
8/26/04
DATE



T-241