

T-150

SURVEY FOR  
GREEN KNICKERS, INC.



*Roger L. Stevens*

Roger L. Stevens, P.S. #7052

Date 8-18-03

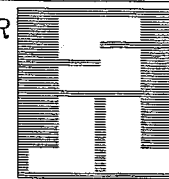
EM-1346VP

REV. 6-24-04

**SHAFFER, JOHNSTON, LICHTENWALTER  
& ASSOCIATES, INC.**

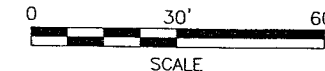
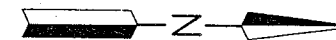
CONSULTING ENGINEERS - SURVEYORS

MANSFIELD OHIO WOOSTER



NEW SPLIT  
RICHLAND COUNTY  
TAX MAP OFFICE

*mlb 7/20/04*  
INITIAL DATE



Distances shown hereon are expressed in feet and decimal parts thereof.

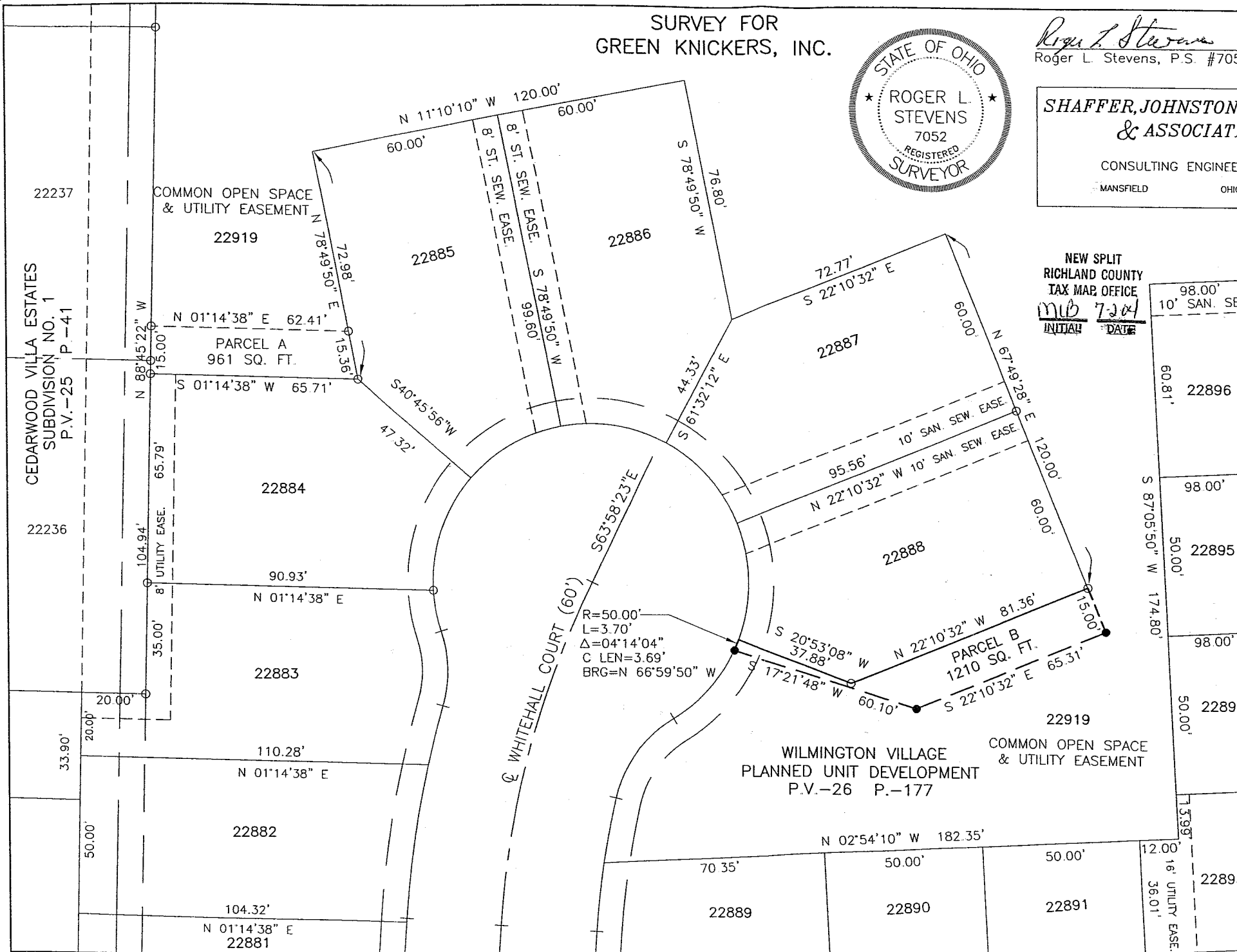
Basis of Bearings: Plat Volume 26, Page 177.

CERTIFICATION: I hereby certify that the foregoing survey was prepared from actual field measurements, in accordance with Chapter 4733-37, Ohio Administration Code.

LEGEND

- IRON PIN FOUND
- IRON PIN SET, 5/8" DIA. ROD WITH PLASTIC CAP STAMPED "S.J.L. INC."

PART OF LOT 22919 OF WILMINGTON VILLAGE, CITY OF MANSFIELD, RICHLAND CO., OHIO.



CEDARWOOD VILLA ESTATES  
SUBDIVISION NO. 1  
P.V.-25 P.-41

22237

22236

33.90'

50.00'

104.32'

N 01°14'38" E

22881

22882

110.28'

N 01°14'38" E

22883

90.93'

N 01°14'38" E

22884

65.79'

104.94'

8' UTILITY EASE.

22885

22886

22919

COMMON OPEN SPACE & UTILITY EASEMENT

22887

22888

22889

22890

22891

22894

22895

22896

22919

16' UTILITY EASE.

36.01'

12.00'

75.98'

87°05'50" W

174.80'

98.00'

50.00'

50.00'

98.00'

60.81'

98.00'

10' SAN. SEW. EASE.

98.00'

60.00'

60.00'

N 67°49'28" E

120.00'

15.00'

65.31'

S 22°10'32" E

60.10'

81.36'

N 22°10'32" W

81.36'

S 20°53'08" W

37.88'

S 17°21'48" W

60.10'

65.31'

S 22°10'32" E

65.31'

15.00'

60.00'

60.00'

N 67°49'28" E

120.00'

15.00'

65.31'

S 22°10'32" E

65.31'

15.00'

60.00'

60.00'

N 67°49'28" E

120.00'

15.00'

65.31'

S 22°10'32" E

65.31'

15.00'

60.00'

60.00'

N 67°49'28" E

120.00'

15.00'

65.31'

S 22°10'32" E

65.31'

15.00'

60.00'

60.00'

N 67°49'28" E

120.00'

15.00'

65.31'

S 22°10'32" E

65.31'

15.00'

60.00'

60.00'

N 67°49'28" E

120.00'

15.00'

65.31'

S 22°10'32" E

65.31'

15.00'

60.00'

60.00'

N 67°49'28" E

120.00'

15.00'

65.31'

S 22°10'32" E

65.31'

15.00'

60.00'

60.00'

N 67°49'28" E

120.00'

15.00'

65.31'

S 22°10'32" E

65.31'

15.00'

60.00'

60.00'

N 67°49'28" E

120.00'

15.00'

65.31'

S 22°10'32" E

65.31'

15.00'

60.00'

60.00'

N 67°49'28" E

120.00'

15.00'

65.31'

S 22°10'32" E

65.31'

15.00'

60.00'

60.00'

N 67°49'28" E

120.00'

15.00'

65.31'

S 22°10'32" E

65.31'

15.00'

60.00'

60.00'

N 67°49'28" E

120.00'

15.00'

65.31'

S 22°10'32" E

65.31'

15.00'

60.00'

60.00'

N 67°49'28" E

120.00'

15.00'

65.31'

S 22°10'32" E

65.31'

15.00'

60.00'

60.00'

N 67°49'28" E

120.00'

15.00'

65.31'

S 22°10'32" E

65.31'

15.00'

60.00'

60.00'

N 67°49'28" E

120.00'

15.00'

65.31'

S 22°10'32" E

65.31'

15.00'

60.00'

60.00'

N 67°49'28" E

120.00'

15.00'

65.31'

S 22°10'32" E

65.31'

15.00'

60.00'

60.00'

N 67°49'28" E

120.00'

15.00'

65.31'

S 22°10'32" E

65.31'

15.00'

60.00'

60.00'

N 67°49'28" E

120.00'

15.00'

65.31'

S 22°10'32" E

65.31'

15.00'

60.00'

60.00'

N 67°49'28" E

120.00'

15.00'

65.31'

S 22°10'32" E

65.31'

15.00'

60.00'

60.00'

N 67°49'28" E

120.00'

15.00'

65.31'

S 22°10'32" E

65.31'

15.00'

60.00'

60.00'

N 67°49'28" E

120.00'

15.00'

65.31'

S 22°10'32" E

65.31'

15.00'

60.00'

60.00'

N 67°49'28" E

120.00'

15.00'

65.31'

S 22°10'32" E

65.31'

15.00'

60.00'

**PARCEL B**

Situated in the City of Mansfield, County of Richland, State of Ohio and being part of Lot 22919 of the consecutively numbered lots in said City as recorded in plat volume 26, page 177 and being more particularly described as follows:

**Beginning** at an iron pin found in the northeasterly corner of Lot 22888 as recorded in said plat volume 26, page 177;

**Thence N 67° 49' 28" E, 15.00 feet** to an iron pin set;

**Thence S 22° 10' 32" E, 65.31 feet** to an iron pin set;

**Thence S 17° 21' 48" W, 60.10 feet** to an iron pin set in a southerly line of said Lot 22919, said iron pin also being in the northerly right of way line of Whitehall Court;

**Thence northwesterly** along said northerly right of way line of Whitehall Court **on a curve to the left having a radius of 50.00 feet, an arc length of 3.70 feet, a chord length of 3.69 feet and a chord bearing of N 66° 59' 50" W** to a point being a southeasterly corner of said Lot 22888, said point being referenced by an iron pin set S 66° 59' 50" E, 3.69 feet from said point;

**Thence N 20° 53' 08" E, 37.88 feet** along the southeasterly line of said Lot 22888 to an iron pin found in a southeasterly corner of said Lot 22888;

**Thence N 22° 10' 32' W, 81.36 feet** along the easterly line of said Lot 22888 to the **place of beginning**, and containing **1210 square feet**, more or less, and subject to all legal highways and easements of record.

Grantees their heirs and assigns do hereby covenant and agree that the parcel of land described in this instrument or any portion thereof will not be conveyed by said grantees, heirs and assigns independent and separate from lot 22888 of said Wilmington Village Planned Unit Development.

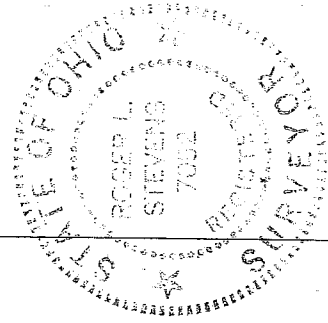
Basis of Bearings: Plat Volume 26, page 177.

All iron pins set are 5/8" diameter reinforcing rod with plastic cap stamped "S.J.L. INC."

According to a survey made in June 2004 by Roger L. Stevens, Ohio Registered Surveyor No. 7052 for Shaffer, Johnston, Lichtenwalter and Associates, Inc..

NEW SPLIT  
RICHLAND COUNTY  
TAX MAP OFFICE

MLB 7-2-04  
INITIAL DATE



A handwritten signature in black ink, appearing to read "Roger L. Stevens".

Roger L. Stevens  
Registered Surveyor No. 7052  
EM1346A

T-150