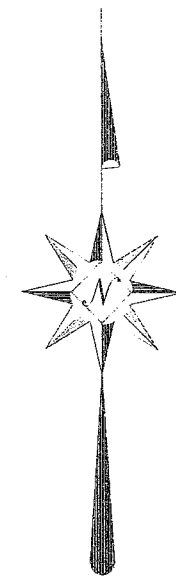


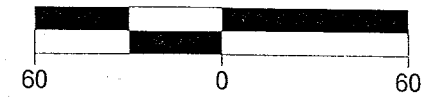
SURVEY PLAT

Parts of Lot #13813, #13814, #13815, #13816 and Lots #13817, #13818, #13819, #13820, #13821, and #13822

City of Mansfield
Richland County, Ohio



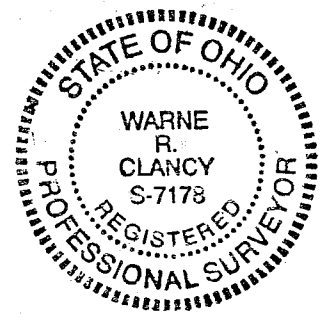
Scale: 1" = 60'



Bearings are based on Survey K-77.

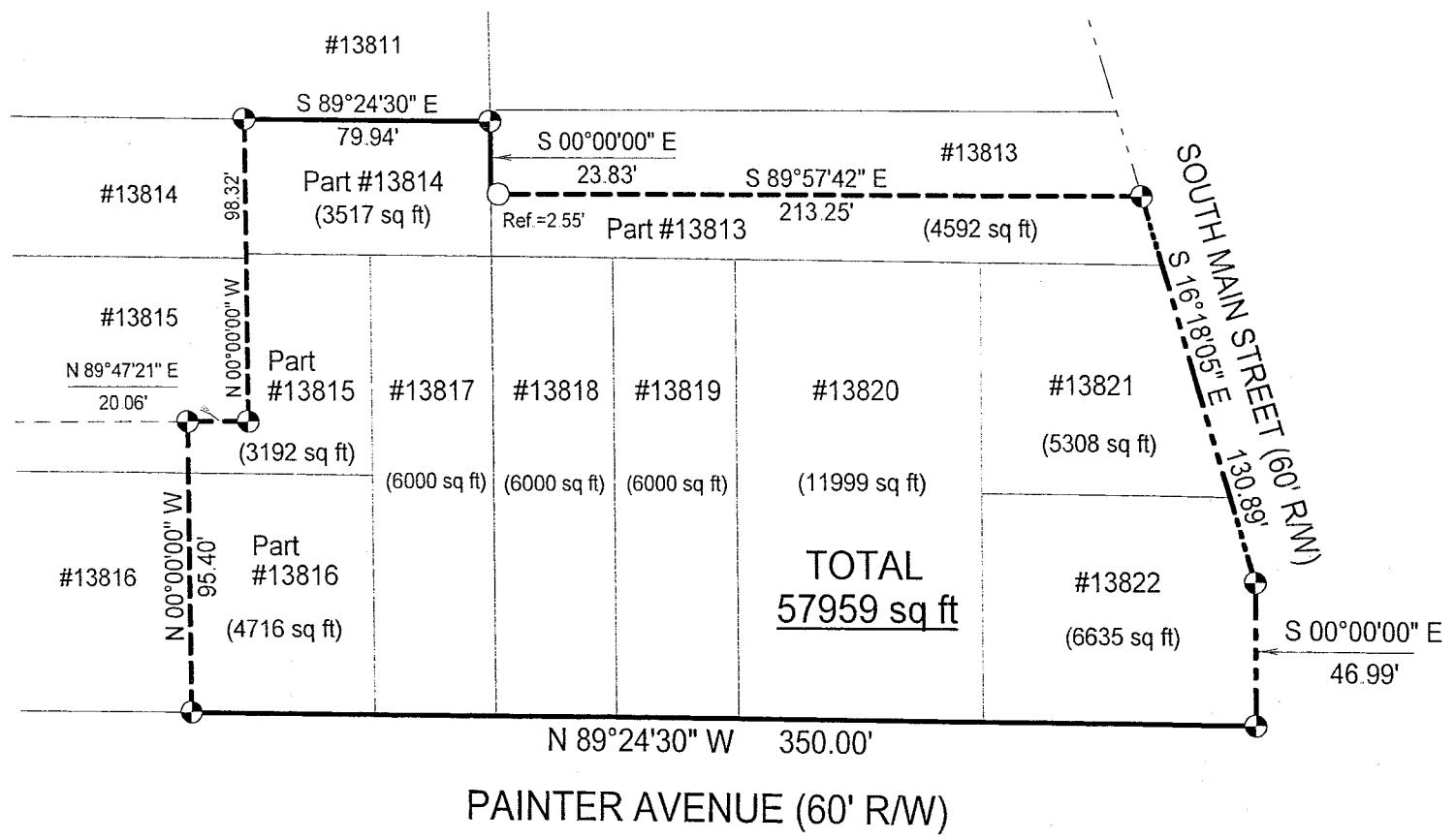
Warne R. Clancy
Warne R. Clancy P.S. #7178

NEW SURVEY
OF EXISTING PARCEL
RICHLAND COUNTY
TAX MAP OFFICE
MIB *6-16-04*
INITIAL DATE



LEGEND

- ⊕ Iron pin set with cap stamped "CLANCY 7178"
- Iron pin found



DATE: 6/10/04
JOB NO.: W060104B

F-117

SURVEY DESCRIPTION

Parts of Lot #13813, #13814, #13815, #13816 and
Lots #13817, #13818, #13819, #13820, #13821, and #13822

City of Mansfield
Richland County, Ohio

Situated in the City of Mansfield, County of Richland, State of Ohio, and being parts of Lot #13813, #13814, #13815, #13816 and Lots #13817, #13818, #13819, #13820, #13821, and #13822 of the consecutively numbered lots of said City, more particularly described as follows:

Beginning for the same at an iron pin set marking the southeast corner of said Lot #13822, the same being the intersection of the west right-of-way line of South Main Street (60' R/W) with the north right-of-way line of Painter Avenue (60' R/W);

Thence, North 89 degrees 24 minutes 30 seconds West with said north right-of-way line, a distance of 350.00 feet to an iron pin set thereon;

Thence, North 00 degrees 00 minutes 00 seconds West, a distance of 95.40 feet to an iron pin set;

Thence, North 89 degrees 47 minutes 21 seconds East, a distance of 20.06 feet to an iron pin set;

Thence, North 00 degrees 00 minutes 00 seconds West, a distance of 98.32 feet to an iron pin set on the north line of said Lot #13814;

Thence, South 89 degrees 24 minutes 30 seconds East, a distance of 79.94 feet to an iron pin set on the west line of said Lot #13813;

Thence, South 00 degrees 00 minutes 00 seconds East with said west line, a distance of 23.83 feet to a point thereon;

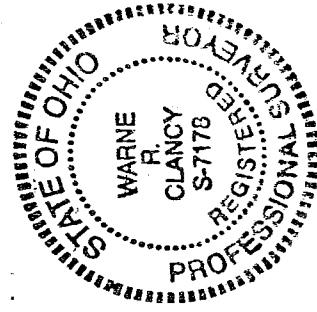
Thence, South 89 degrees 57 minutes 42 seconds East, passing an iron pin found for reference at 2.55 feet, a distance of 213.25 feet to an iron pin set on the said west South Main Street right-of-line;

Thence, South 16 degrees 18 minutes 05 seconds East with said right-of-way line, a distance of 130.89 feet to an iron pin set thereon;

Thence, South 00 degrees 00 minutes 00 seconds East with said right-of-way line, a distance of 46.99 feet to the Place of Beginning, containing 57,959 square feet, of which 4,592 lie in the said part of Lot #13813, 3,517 in the said part of Lot #13814, 3,192 in the said part of Lot #13815, 4,716 in the said part of Lot #13816, and 6000 square feet in each of said Lots #13817, #13818, and #13819, and 11,999 in said Lot #13820, 5,308 in said Lot #13821, and 6,635 in said Lot #13822 according to survey by Warne R. Clancy, Professional Surveyor #7178, on June 1, 2004, but subject to all legal highways and easements of record.

Iron pins set are #5 rebars with caps stamped "CLANCY 7178".

Bearings are based on Survey K-77.



Warne R. Clancy
Warne R. Clancy
P.S. 7178

NEW SURVEY
OF EXISTING PARCEL
RICHLAND COUNTY
TAX MAP OFFICE
MLB le. lrbh
INITIAL DATE

