

AVOR

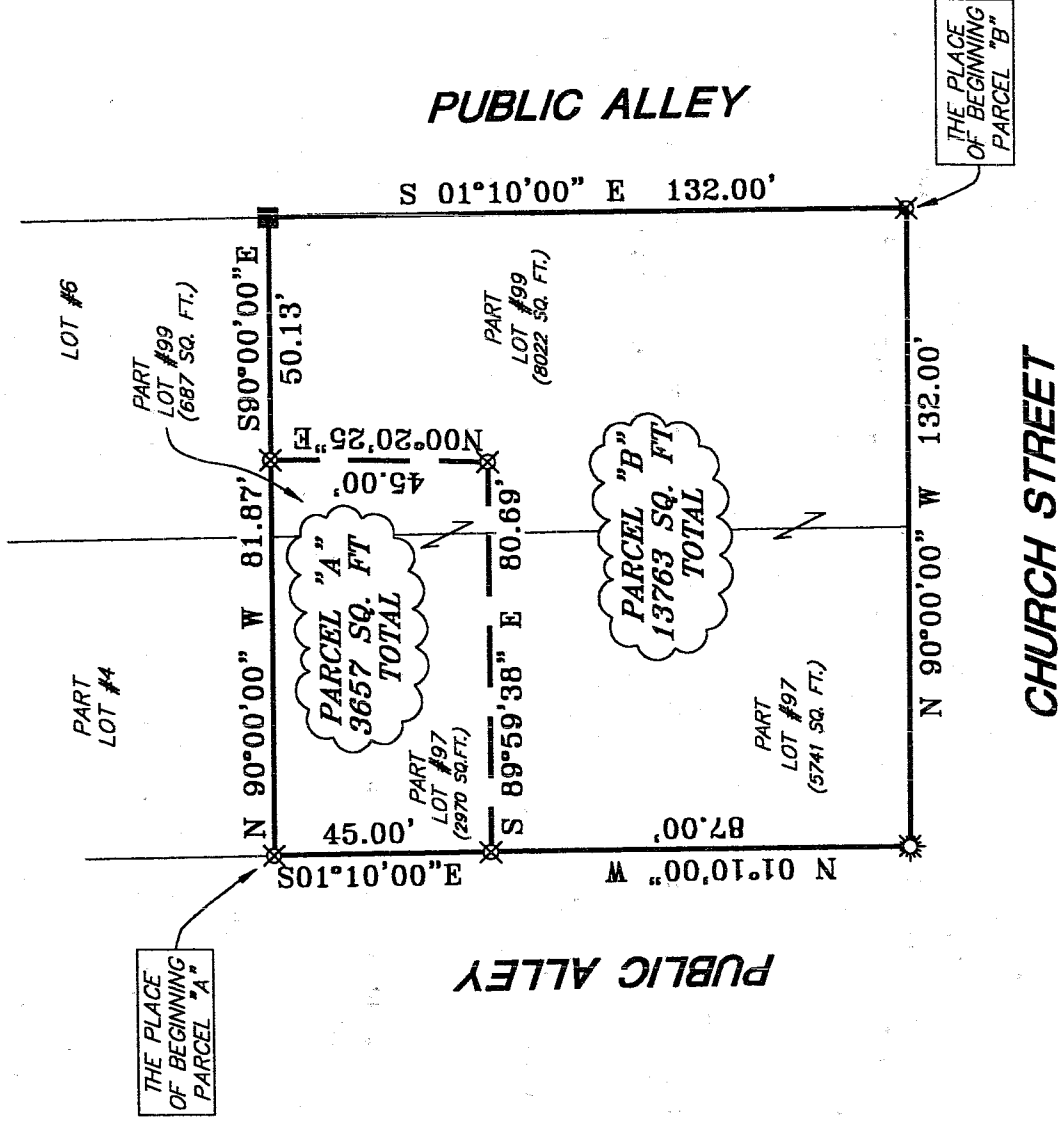


SCALE: 1" = 40'

**LEGEND**

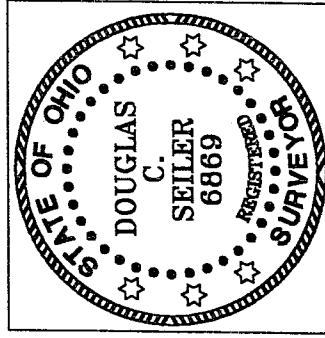
- CORNER POST FOUND
- ⊙ 3/4" DRILL HOLE SET IN CONCRETE
- ⊗ 5/8" IRON PIN SET WITH CAP STAMPED  
SEILER AND CRAIG SURVEYING, INC.

BEARINGS ARE BASED ON K-317 ON  
FILE AT THE RICHLAND COUNTY TAX  
MAP OFFICE AND ARE INTENDED TO BE  
USED FOR ANGULAR DETERMINATION ONLY.



NEW SURVEY OF EXISTING PARCEL  
RICHLAND COUNTY  
TAX MAP OFFICE  
MLB INITIAL  
6-3-04 DATE

NEW SPLIT  
RICHLAND COUNTY  
TAX MAP OFFICE  
MLB INITIAL  
6-3-04 DATE



*Douglas C. Seiler* 6/3/04

SURVEY BY: DOUGLAS C. SEILER P.S. #6869  
for SEILER AND CRAIG SURVEYING, INC.  
52-172 NORTH MAIN STREET  
MANSFIELD, OHIO 44902  
(419) 525-3644  
FAX (419) 525-3606

VILLAGE OF LEXINGTON  
**APPROVED**  
Date 6-3-2004  
Initials CF Radolke

SURVEY PLAT FOR
VIDONISH
PART LOT #97 AND PART LOT #99 VILLAGE OF LEXINGTON RICHLAND COUNTY, OHIO
DATE: MAY 24, 2004 SCALE: 1"=40'
VIDONISH.DWG

T-98

**SEILER & CRAIG SURVEYING, INC.**

*Douglas C. Seiler, PS & Chad F. Craig, PS*  
52 1/2 North Main Street  
Mansfield, Ohio 44902  
419-525-3644 Fax 419-525-3696  
www.seilerandcraig.com

**SURVEY DESCRIPTION**

**PARCEL "A"**

PART LOT #97 and PART OF LOT #99  
VILLAGE OF LEXINGTON,  
RICHLAND COUNTY, OHIO

Situated in the Village of Lexington, County of Richland, State of Ohio and being known as a part of Lot #97 and a part of Lot #99 of the consecutively numbered lots in said village, the entire tract being more particularly described as follows:

Beginning for the same at an iron pin set marking the northwest corner of said Lot #97; Thence, South 01 degrees 10 minutes 00 seconds East with the west line of said lot a distance of 45.00 feet to an iron pin set;

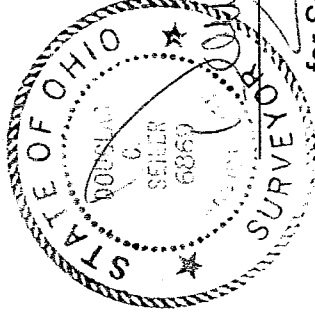
Thence, South 89 degrees 59 minutes 38 seconds East a distance of 80.69 feet to an iron pin set; Thence, North 00 degrees 20 minutes 25 seconds East a distance of 45.00 to an iron pin set on the north line of said Lot #99;

Thence, North 90 degrees 00 minute 00 seconds West with said north line and the westerly prolongation thereof, a distance of 81.87 feet to the place of beginning, containing a total of 3657 square feet, of which 2970 square feet are located within a part of said Lot #97, and 687 square feet are located within part of said Lot #99, according to survey by Douglas C. Seiler, Professional Surveyor #6869 for Seiler & Craig Surveying, Inc. on May 24, 2004.

Iron pins set are 5/8" rods with caps stamped "SEILER & CRAIG INC."

Bearings are based on survey K-317 on file at the Richland County Tax Map office and are intended to be used for angular determination only.

NEW SPLIT  
RICHLAND COUNTY  
TAX MAP OFFICE  
MSB 6-304  
INITIAL DATE



Douglas C. Seiler PS 6869  
for Seiler & Craig Surveying, Inc.

**SEILER & CRAIG SURVEYING, INC.**

Douglas C. Seiler, PS & Chad F. Craig, PS  
52 1/2 North Main Street  
Mansfield, Ohio 44902  
419-525-3644 Fax 419-525-3696  
www.seilerandcraig.com

**SURVEY DESCRIPTION**

**PARCEL "B"**

PART LOT #97 and PART OF LOT #99  
VILLAGE OF LEXINGTON,  
RICHLAND COUNTY, OHIO

Situated in the Village of Lexington, County of Richland, State of Ohio and being known as a part of Lot #97 and a part of Lot #99 of the consecutively numbered lots in said village, the entire tract being more particularly described as follows:

Beginning for the same at an iron pin set marking the southeast corner of Lot #99 in said village; Thence, North 90 degrees 00 minutes 00 seconds West with the south line of said lot and the westerly prolongation thereof a distance of 132.00 feet to a drill hole set in concrete, said drill hole marking the southwest corner of said Lot #97;

Thence, North 01 degrees 10 minutes 00 seconds West with the west line of said Lot #97, a distance of 87.00 feet to an iron pin set;

Thence, South 89 degrees 59 minutes 38 seconds East a distance of 80.69 feet to an iron pin set;

Thence, North 00 degrees 20 minutes 25 seconds East a distance of 45.00 to an iron pin set on the north line of said Lot #99;

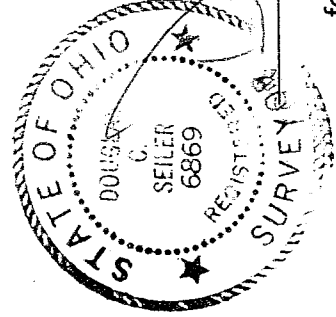
Thence, South 90 degrees 00 minutes 00 seconds East with said north line a distance of 50.13 feet to a corner post found and accepted as marking the northeast corner thereof;

Thence, South 01 degrees 10 minutes 00 seconds East with the east line of said lot a distance of 132.00 feet to the place of beginning, containing a total of 13763 square feet, of which 5741 square feet are located within part of said Lot #97, and 8022 square feet are located within part of said Lot #99, according to survey by Douglas C. Seiler, Professional Surveyor #68869 for Seiler & Craig Surveying, Inc. on May 24, 2004.

Iron pins set are 5/8" rods with caps stamped "SEILER & CRAIG INC."

Bearings are based on survey K-317 on file at the Richland County Tax Map office and are intended to be used for angular determination only.

NEW SURVEY  
OF EXISTING PARCEL  
RICHLAND COUNTY  
TAX MAP OFFICE  
MLB 6-2-04  
INITIAL DATE



Douglas C. Seiler PS 68869  
for Seiler & Craig Surveying, Inc.

T-98

T-99