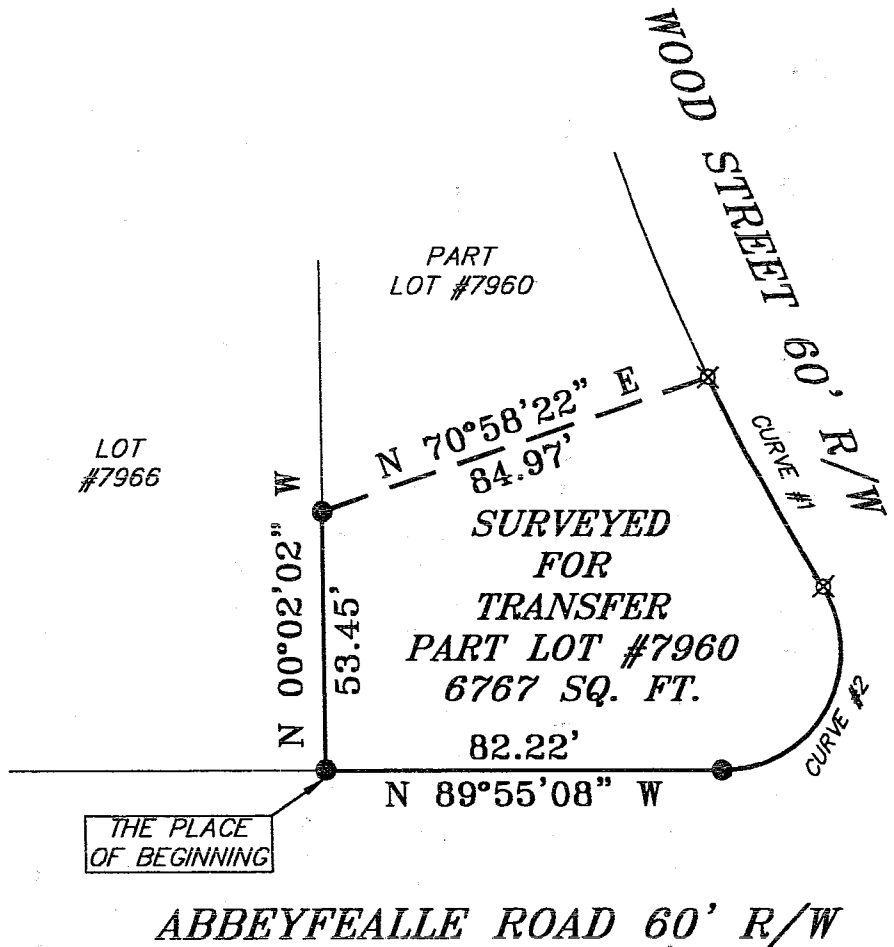
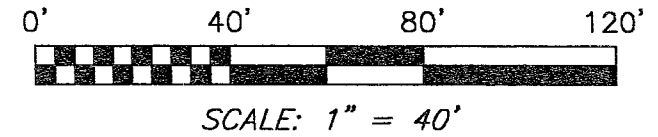


NORTH



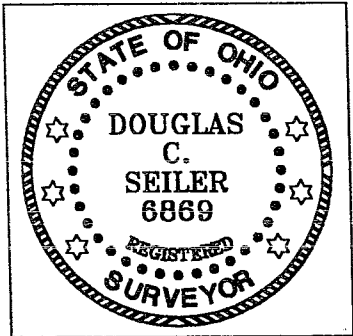
BEARINGS ARE BASED ON AN ASSUMED MERIDIAN AND ARE INTENDED TO BE USED FOR ANGULAR DETERMINATION ONLY.



CURVE #1	CURVE #2
R=479.26'	R=25.00'
Δ=05°52'57"	Δ=121°13'13"
L=49.21'	L=52.89'
C LEN=49.18"	C LEN=43.57'
BRG=S 28°16'45" E	BRG=S 29°23'24" W

LEGEND

- iron pin, found
- ⊗ 5/8" iron pin with cap stamped "SEILER & CRAIG INC.", set



NEW SURVEY  
OF EXISTING PARCEL  
RICHLAND COUNTY  
TAX MAP OFFICE

MS 5-24-04  
INITIAL DATE

*Douglas C. Seiler*

SURVEY BY: DOUGLAS C. SEILER PS 6869  
FOR SEILER & CRAIG SURVEYING, INC.  
52-1/2 NORTH MAIN STREET  
MANSFIELD, OHIO 44902  
(419) 525-3644  
FAX (419) 525-3696

SURVEY PLAT FOR PROPERTY TRANSFER	
PART LOT #7960 CITY OF MANSFIELD OHIO	
DATE: MAY 14, 2004	SCALE: 1"=40'
462WOOD.DWG	

**SEILER & CRAIG SURVEYING, INC.**

Douglas C. Seiler, PS & Chad F. Craig, PS  
52 1/2 North Main Street  
Mansfield, Ohio 44902  
419-525-3644 Fax 419-525-3696  
www.seilerandcraig.com

**SURVEY DESCRIPTION**

PART OF LOT # 7960  
CITY OF MANSFIELD, OHIO

Situated in the City of Mansfield, County of Richland, State of Ohio and being known as a part of Lot # 7960 of the consecutively numbered lots in said city, and being more particularly described as follows:

Beginning for the same at an iron pin found and accepted as marking the southwest corner of said lot; Thence, North 00 degrees 02 minutes 02 seconds West with the west line of said lot a distance of 53.45 to an iron pin found;

Thence, North 70 degrees 58 minutes 22 seconds East a distance of 84.97 feet to an iron pin set on the west line of Wood Street;

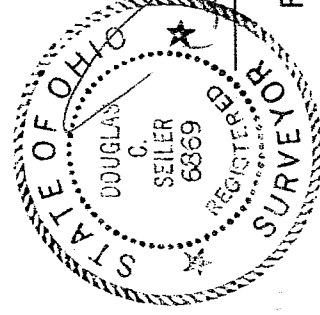
Thence, with said west line along a curve concave to the northeast with a central angle of 05 degrees 52 minutes 57 seconds, a radius of 479.26 feet, an arc distance of 49.21 feet, a chord distance of 49.18 feet, with a chord bearing of South 28 degrees 16 minutes 45 seconds East to an iron pin set;

Thence, with said west line along a curve concave to the west with a central angle of 121 degrees 13 minutes 13 seconds, a radius of 25.00 feet, an arc distance of 52.89 feet, a chord distance of 43.57 feet, with a chord bearing of South 29 degrees 23 minutes 24 seconds West to an iron pin found and accepted as marking the point of tangency of said curve, said iron pin being located on the north line of Abbeyfalle Road;

Thence, North 89 degrees 55 minutes 08 seconds West with said north line a distance of 82.22 feet to the place of beginning, containing 6767 square feet according to survey by Douglas C. Seiler, Professional Surveyor #68669 for Seiler and Craig Surveying Inc. on May 14, 2004.

Iron pins set are 5/8" rods with caps stamped "SEILER 68669".

Bearings are based on an assumed meridian and are intended to be used for angular determination only.



*Douglas C. Seiler*  
Douglas C. Seiler P. S. #68669  
For Seiler and Craig Surveying, Inc.

NEW SURVEY  
OF EXISTING PARCEL  
RICHLAND COUNTY  
TAX MAP OFFICE

MSB 5.24.04  
INITIAL DATE