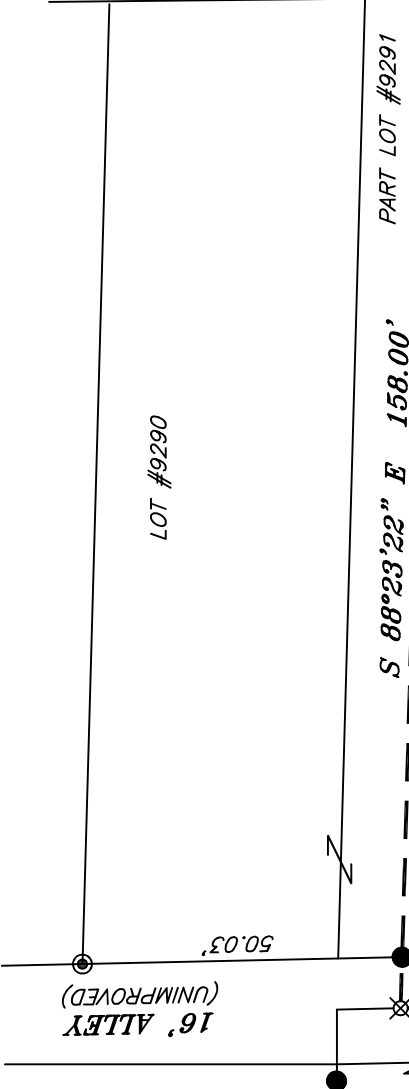




LOT #9293



PART VACATED ALLEY

LOT #9292

LINE	BEARING	DISTANCE
L1	N 01°27'12" W	12.50'
L2	S 88°29'55" W	38.35'

PART VACATED ALLEY

K. J. GIESIGE
O.R.V. 1658, PAGE 530

PART LOT #9291
14,664 SQ. FT. TOTAL
(10,620 SF)

(10,620 SF)

PART VACATED PRINCETON STREET

PART VACATED PRINCETON STREET

(3,442 SF)

PART VACATED PRINCETON STREET

S 88°29'55" W 111.62'

89.92'

P.O.B.

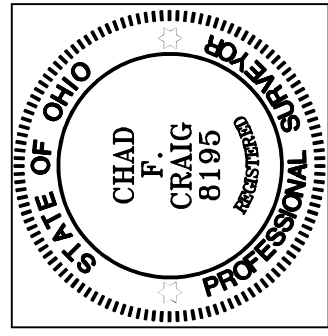
S 88°29'55" W 6.72'

LOT #15915

LOT #15914

LEGEND

- IRON PIN FOUND
- ⊙ IRON PIPE FOUND
- ⊗ 5/8" IRON PIN SET WITH CAP STAMPED "CRAIG 8195"

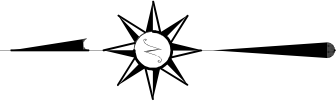


Chad F. Craig

SURVEY BY: CHAD F. CRAIG P.S. #8195
for SEILER & CRAIG SURVEYING INC.
270 PARK AVENUE WEST
MANSFIELD, OHIO 44902
(419) 525-3644
EMAIL:SEILERANDCRAIG@SEILERANDCRAIG.COM

PRINCETON ST AND ALLEY
VACATION ORD. 24-130
ORV.3020, P.4305

NORTH



BASIS OF BEARING IS STATE PLANE
GRID NORTH MAD 83 (2011), GEOD
18A, OHIO NORTH ZONE.

NEW SPLIT
RICHLAND COUNTY
TAX MAP OFFICE

EAK 10-21-24

INITIAL & DATE

QQ-298

NEW SURVEY
OF EXISTING PARCEL
RICHLAND COUNTY
TAX MAP OFFICE

EAK 10-21-24

INITIAL & DATE

PLAT VOL. 10, PG. 11

SURVEY PLAT FOR

PROPERTY TRANSFER

PART LOT #9291, PART VACATED ALLEY &
PART VACATED PRINCETON STREET, CITY OF
MANSFIELD, RICHLAND COUNTY, OHIO

DATE: SEPTEMBER 16, 2024 SCALE: 1"=30'

GRASMERE_AVE_168

GRASMERE AVENUE 50' R/W

S 00°34'34" E 92.00'

SURVEY DESCRIPTION

PT. LOT #9291, PT. VACATED ALLEY, & PT. VACATED PRINCETON STREET
CITY OF MANSFIELD,
RICHLAND COUNTY, OHIO

Situated in the City of Mansfield, County of Richland, State of Ohio and being known as part Vacated Alley, part Vacated Princeton Street, and part Lot #9291 of the consecutively numbered lots in said city and being more particularly described as follows:

Beginning for the same at an iron pipe found and accepted as marking the northeast corner of Lot #15914 and being on the south line of a vacated Princeton Street, Thence, South 88 degrees 29 minutes 55 seconds West with the north line of said lot and the south line of said street 111.62 feet to an iron pipe found on the northwest corner of said lot;

Thence, North 01 degree 27 minutes 12 seconds West 12.50 feet to an iron pin set;

Thence, South 88 degrees 29 minutes 55 seconds West 38.35 feet to an iron pin set;

Thence, North 01 degree 14 minutes 27 seconds West 88.07 feet to an iron pin set in the center of a vacated alley;

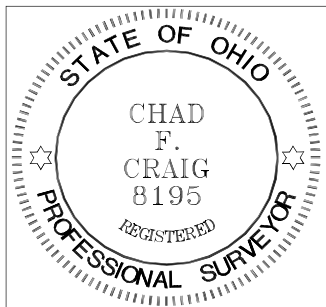
Thence, South 88 degrees 23 minutes 22 seconds East passing through an iron pin found at 8.00, a total distance of 158.00 feet to an iron pin set on the east line of Lot #9291 and the west line of Grasmere Avenue (50' R/W);

Thence, South 00 degrees 34 minutes 34 seconds East with the east line of said lot and the west line of Grasmere Avenue and the southerly prolongation thereof 92.00 feet to an iron pin set on the east line of said vacated street and the west line of said Avenue;

Thence, South 88 degrees 29 minutes 55 seconds West with the south line of said vacated street 6.72 feet to the place of beginning, containing a total of 14,664 square feet, of which 10,620 square feet are in Part Lot #9291, 602 square feet are in part Vacated Alley, and 3,442 square feet are in part Vacated Princeton Street, according to survey by Chad F. Craig P.S. 8195 on September 16, 2024, but subject to all easements, right of ways and highways of record.

Iron pins set are 5/8" rods with caps stamped "CRAIG 8195".

Bearings are based on State Plane Grid North NAD 83 (2011), Geoid 18A, Ohio North Zone and are intended to be used for angular determination only.



NEW SPLIT
RICHLAND COUNTY
TAX MAP OFFICE
EAK 10-21-24

INITIAL & DATE

NEW SURVEY
OF EXISTING PARCEL
RICHLAND COUNTY
TAX MAP OFFICE
EAK 10-21-24

INITIAL & DATE

Chad F. Craig P.S. #8195
Seiler and Craig Surveying, Inc.