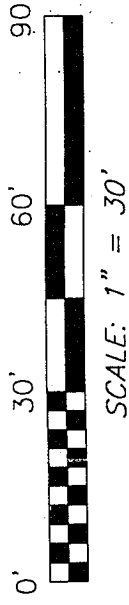
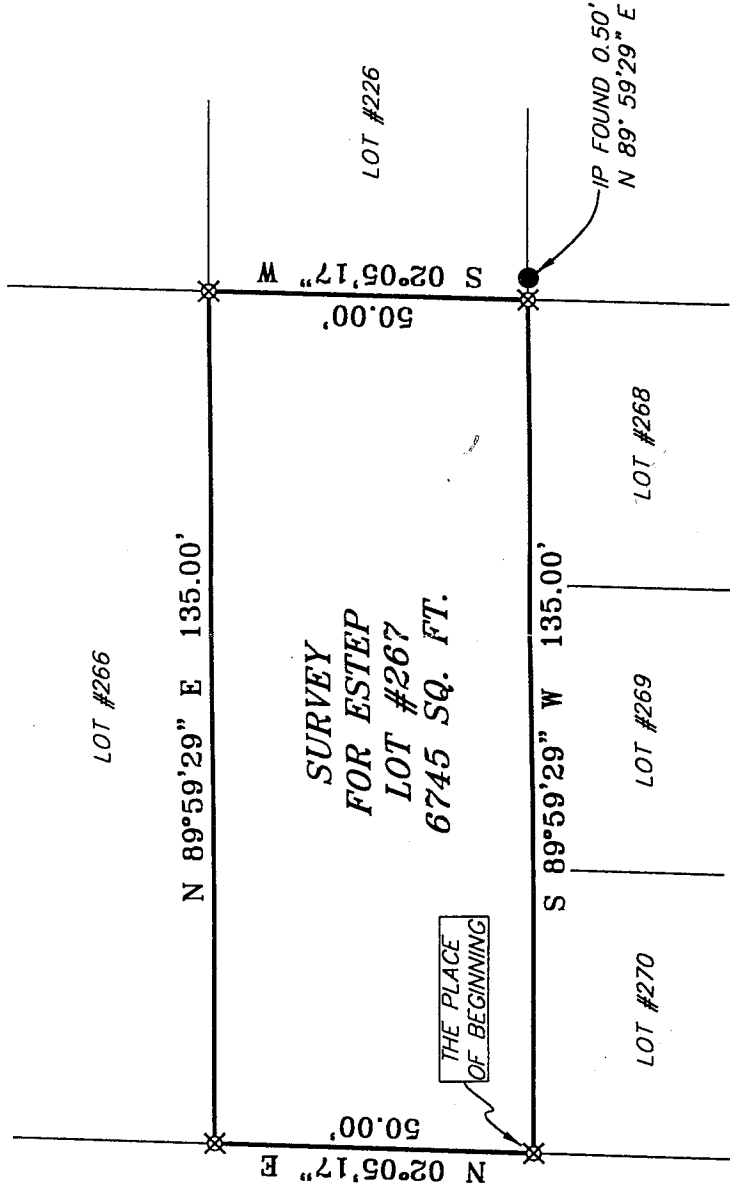


AVORCA



BEARINGS ARE BASED ON SURVEY L-58 ON FILE IN THE RICHLAND COUNTY TAX MAP OFFICE AND ARE INTENDED TO BE USED FOR ANGULAR DETERMINATION ONLY.

BELMONT AVENUE 60' R/W

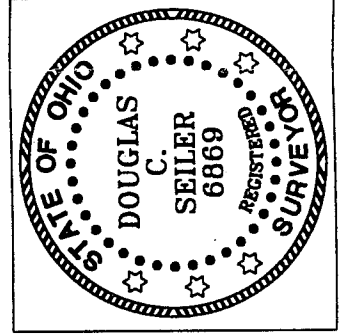


LEGEND

- IRON PIN FOUND
- ⊗ IRON PIN SET WITH CAP STAMPED "SEILER 6869"

NEW SURVEY
OF EXISTING PARCEL
RICHLAND COUNTY
TAX MAP OFFICE

EAK 5-9-24
INITIAL & DATE
DWG ONLY
QQ-126



Douglas C. Seiler

SURVEYED BY: DOUGLAS C. SEILER P.S. #6869
for SEILER & CRAIG SURVEYING, INC.
52-1/2 NORTH MAIN STREET
MANSFIELD, OHIO 44902
(419) 525-3644
FAX (419) 525-3696

SURVEY PLAT FOR
JAMES ESTEP

LOT #267, COUNTRY CLUB ADDITION #1
MADISON TOWNSHIP
RICHLAND COUNTY, OHIO

JULY 2, 2004

SCALE: 1" = 30'

920BLMNT.DWG