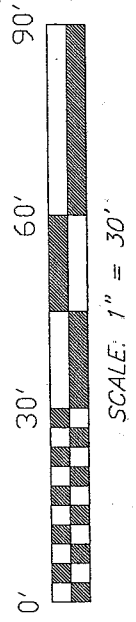
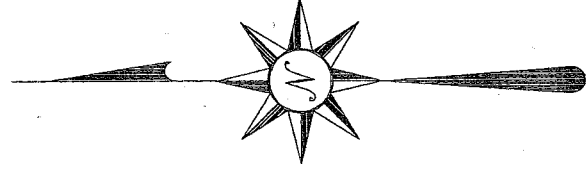


Q-292

NORTH



Bearings are based on an assumed meridian and are intended to be used for angular determination only.

LEGEND

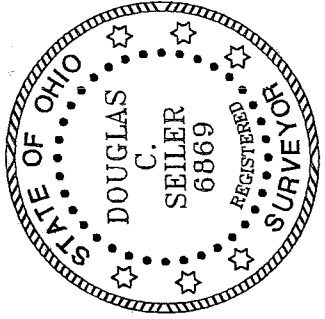
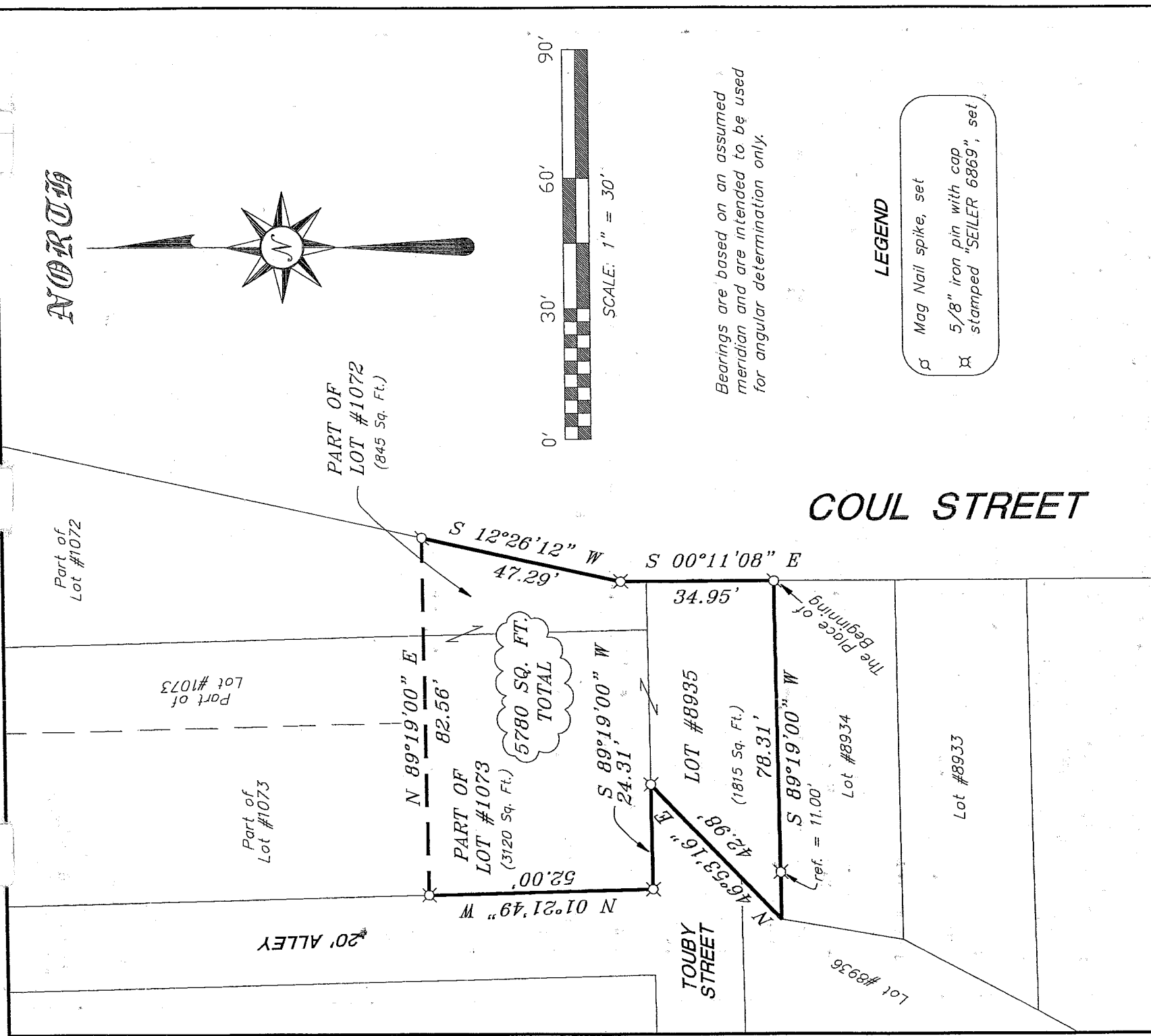
- ⊕ Mag Nail spike, set
- ⊗ 5/8" iron pin with cap stamped "SEILER 6869", set

NEW SURVEY
OF EXISTING PARCEL
RICHLAND COUNTY
TAX MAP OFFICE

EAJ 12/21/02
INITIAL DATE

SURVEY PLAT FOR
ATAWAY ESTATE
LOT #8935, PART OF LOT #1072, and PART OF LOT #1073 CITY OF MANSFIELD, OHIO
DATE: DEC. 11, 2002 SCALE: 1" = 30'
coulst02.dwg/coulstf.asc

COUL STREET



Douglas C. Seiler

SURVEY BY: DOUGLAS C. SEILER
PROFESSIONAL SURVEYOR #6869
52-1/2 NORTH MAIN STREET
MANSFIELD, OHIO 44902
(419) 525-3644
FAX (419) 525-3696

Douglas C. Seiler
Professional Land Surveyor

52½ North Main • Mansfield, Ohio 44902
(419) 525-3644 • FAX (419) 525-3696

SURVEY DESCRIPTION

LOT #8935, PART OF LOT #1073,
and PART OF LOT #1072
CITY OF MANSFIELD, OHIO

Situated in the City of Mansfield, County of Richland, State of Ohio and being known as Lot #8935, part of Lot #1073, and part of Lot #1072 of the consecutively numbered lots in said city, being more particularly described as follows:

Beginning for the same at a Mag Nail spike set marking the southeast corner of said Lot #8935; Thence, South 89 degrees 19 minutes 00 seconds West with the south line of said lot, passing through an iron pin set for reference at 67.31 feet, a total distance of 78.31 feet to the southwest corner of said lot;

Thence, North 46 degrees 53 minutes 16 seconds East with the west line of said lot, a distance of 42.98 feet to an iron pin set marking the northwest corner thereof;

Thence, South 89 degrees 19 minutes 00 seconds West with the south line of said Lot #1073, a distance of 24.31 feet to an iron pin set marking the southwest corner of said lot;

Thence, North 01 degree 21 minutes 49 seconds West with the west line of said lot, a distance of 52.00 feet to an iron pin set;

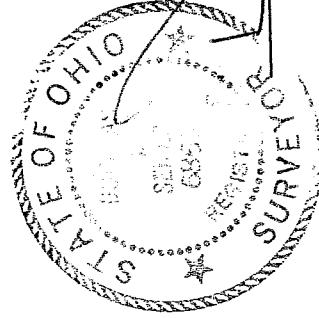
Thence, North 89 degrees 19 minutes 00 seconds East a distance of 82.56 feet to a Mag Nail spike set on the west line of Coul Street;

Thence, South 12 degrees 26 minutes 12 seconds West with said west line, a distance of 47.29 feet to an iron pin set;

Thence, South 00 degrees 11 minutes 08 seconds East, continuing with said west line, a distance of 34.95 feet to the place of beginning, containing a total of 5780 square feet, of which 3120 square feet are located within part of said Lot #1073, 845 square feet are located within part of said Lot #1072, and 1815 square feet are located within said Lot #8935, according to survey by Douglas C. Seiler, Professional Surveyor #6869 on December 11, 2002.

Iron pins set are 5/8" rods with caps stamped "SEILER 6869".

Bearings are based on an assumed meridian and are intended to be used for angular determination only.



Douglas C. Seiler
Professional Surveyor #6869

NEW SURVEY
OF EXISTING PARCEL
RICHLAND COUNTY,
TAX MAP OFFICE

ESK 12-27-02
INITIAL DATE