

Douglas C. Seiler

Professional Land Surveyor

52½ North Main • Mansfield, Ohio 44902
(419) 525-3644 • FAX (419) 525-3696

SURVEY DESCRIPTION

PARCEL "A"

PART OF LOT #2530
CITY OF MANSFIELD, OHIO

Situated in the City of Mansfield, County of Richland, State of Ohio and being a part of Lot #2530 of the consecutively numbered lots in said city, being more particularly described as follows:

Beginning for the same at a Mag Nail spike set marking the northwest corner of said lot; Thence, South 00 degrees 11 minutes 08 seconds East with the west line of said lot a distance of 37.00 feet to a Mag Nail spike set;

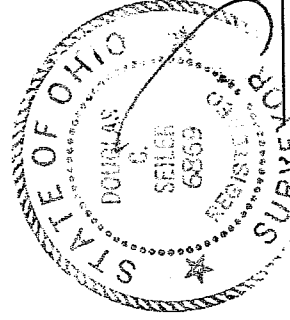
Thence, North 88 degrees 52 minutes 59 seconds East, passing through an iron pin set for reference at 84.54 feet, a total distance of 85.54 feet to a point;

Thence, North 00 degrees 11 minutes 08 seconds West a distance of 37.00 feet to an iron pin set;

Thence, South 88 degrees 52 minutes 59 seconds West a distance of 85.54 feet to the place of beginning, containing 3164 square feet, according to survey by Douglas C. Seiler, Professional Surveyor #6869 on December 11, 2002.

Iron pins set are 5/8" rods with caps stamped "SEILER 6869".

Bearings are based on an assumed meridian and are intended to be used for angular determination only.



NEW SURVEY
OF EXISTING PARCEL
RICHLAND COUNTY
TAX MAP OFFICE

INITIAL DCS
DATE 12/11/02

Douglas C. Seiler
Professional Surveyor #6869

Q-283

Q-283

Douglas C. Seiler

Professional Land Surveyor

52½ North Main • Mansfield, Ohio 44902
(419) 525-3644 • FAX (419) 525-3696

SURVEY DESCRIPTION

PARCEL "B"

PART OF LOT #2529, and
PART OF LOT #2530
CITY OF MANSFIELD, OHIO

Situated in the City of Mansfield, County of Richland, State of Ohio and being a part of Lot #2529, and a part of Lot #2530 of the consecutively numbered lots in said city, being more particularly described as follows:

Beginning for the same at a Mag Nail spike set marking the southwest corner of said Lot #2529; Thence, North 00 degrees 11 minutes 08 seconds West with the west line of said lot and the northerly prolongation thereof, a distance of 37.00 feet to a Mag Nail spike set;

Thence, North 88 degrees 52 minutes 59 seconds East, passing through an iron pin set for reference at 84.54 feet, a total distance of 85.54 feet to a point;

Thence, South 00 degrees 11 minutes 08 seconds East a distance of 37.00 feet to a galvanized fence post found on the south line of said Lot #2529;

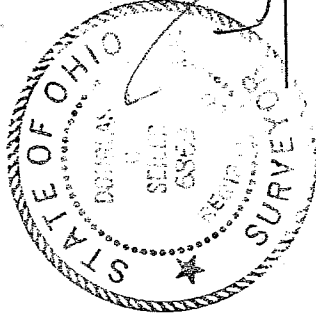
Thence, South 88 degrees 52 minutes 59 seconds West with said south line, a distance of 85.54 feet to the place of beginning, containing a total of 3164 square feet, of which 512 square feet are located within part of said Lot #2530, and 2652 square feet are located within part of said Lot #2529, according to survey by Douglas C. Seiler, Professional Surveyor #6869 on December 11, 2002.

Iron pins set are 5/8" rods with caps stamped "SEILER 6869".

Bearings are based on an assumed meridian and are intended to be used for angular determination only.

NEW SURVEY
OF EXISTING PARCEL
RICHLAND COUNTY
TAX MAP OFFICE

INITIAL DCS DATE 12-23-02



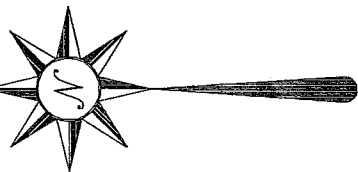
Douglas C. Seiler
Professional Surveyor #6869

Q-283

NORTH



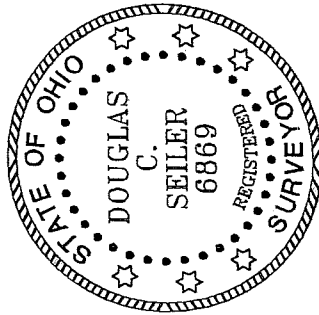
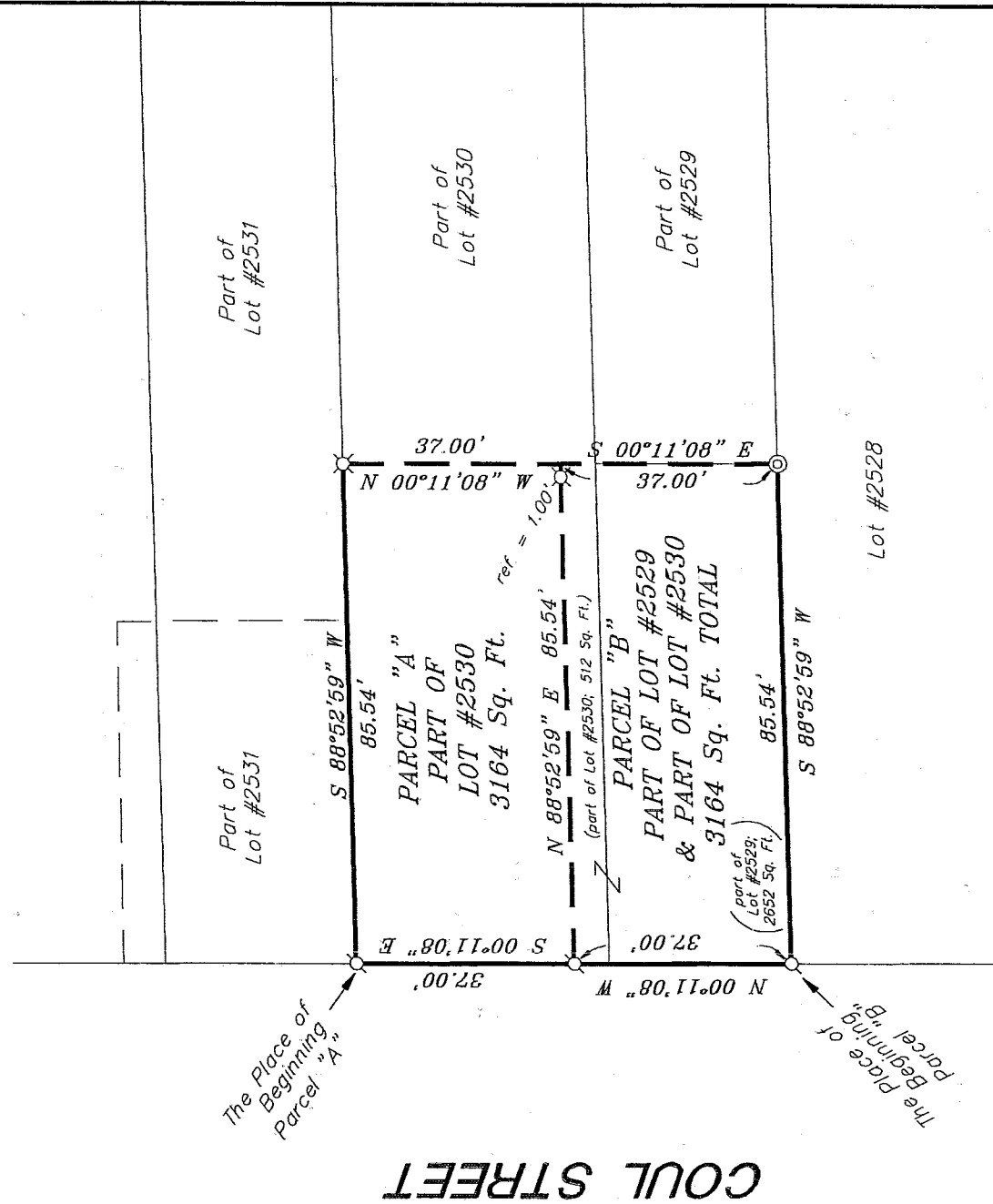
SCALE: 1" = 30'



Bearings are based on an assumed meridian and are intended to be used for angular determination only.

LEGEND

- ⊙ galvanized corner fence post, found
- ⊕ Mag nail spike, set
- ⊗ 5/8" iron pin with cap stamped "SEILER 6869", set



NEW SURVEY
OF EXISTING PARCEL
RICHLAND COUNTY
TAX MAP OFFICE

INITIAL DS DATE 12/16/02

Douglas C. Seiler 12/16/02

SURVEY BY: DOUGLAS C. SEILER
PROFESSIONAL SURVEYOR #6869
5212 NORTH MAIN STREET
MANSFIELD, OHIO 44902
(419) 764-3644

SURVEY PLAY FOR
ATAWAY ESTATE

PART LOT #2530 & PART LOT #2529
CITY OF MANSFIELD
OHIO

DATE: DEC. 11, 2002 SCALE: 1" = 30'