

SURVEY PLAT

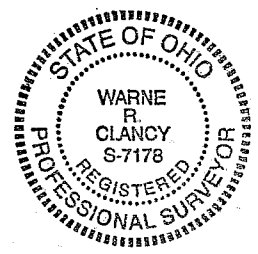
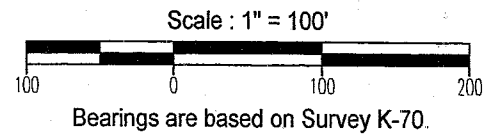
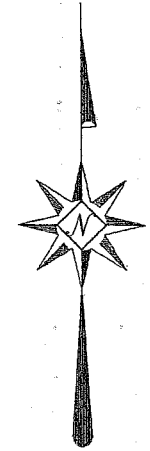
Part Northeast Quarter - Section 15

Springfield Township, T-21, R-19

City of Ontario

Richland County, Ohio

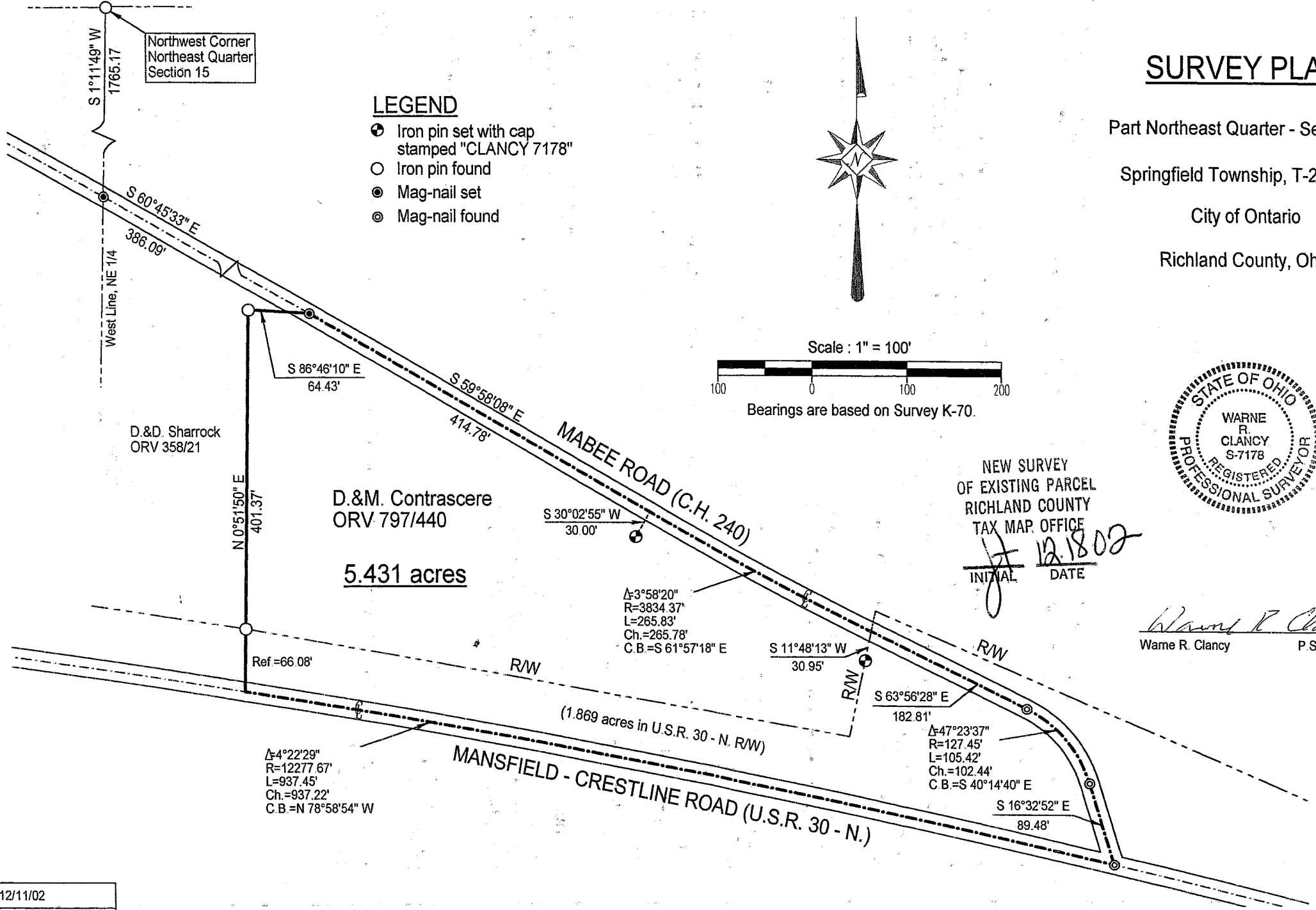
- LEGEND**
- Iron pin set with cap stamped "CLANCY 7178"
 - Iron pin found
 - ⊙ Mag-nail set
 - ⊙ Mag-nail found



NEW SURVEY
OF EXISTING PARCEL
RICHLAND COUNTY
TAX MAP OFFICE

W *12.18.02*
INITIAL DATE

Warne R. Clancy
Warne R. Clancy P.S. #7178



DATE: 12/11/02
JOB NO.: W121002

SURVEY DESCRIPTION

Part Northeast Quarter - Section 15
Springfield Township, T-21, R-19
City of Ontario
Richland County, Ohio

Situated in the City of Ontario, Township of Springfield, County of Richland, State of Ohio, and being a part of the Northeast Quarter of Section 15 of Township 21 of Range 19, more particularly described as follows:

Commencing for the same at an iron pin found marking the northwest corner of said northeast quarter; Thence, South 01 degrees 11 minutes 49 seconds West with the west line of said quarter, a distance of 1765.17 feet to a Mag-nail set marking its intersection with the centerline of Mabee Road (C.H. 240); Thence, South 60 degrees 45 minutes 33 seconds East with said centerline, a distance of 386.09 feet to a Mag-nail set marking the northeast corner of an existing parcel owned by D. & D. Sharrock (ORV 358/21), the Place of Beginning;

Thence, continuing with said centerline South 59 degrees 58 minutes 08 seconds East, a distance of 414.78 feet to a point of curvature thereon, referenced by an iron pin set South 30 degrees 02 minutes 55 seconds West, a distance of 30.00 feet;

Thence, continuing with said centerline southeasterly along a curve to the left, defined by a 03 degree 58 minute 20 second central angle, a 3,834.37 foot radius, a 265.83 foot arc, and a 265.78 foot chord which bears South 61 degrees 57 minutes 18 seconds East, to its point of tangency thereon, referenced by an iron pin set South 11 degrees 48 minutes 13 seconds West, a distance of 30.95 feet;

Thence, continuing with said centerline South 63 degrees 56 minutes 28 seconds East, a distance of 182.81 feet to a Mag-nail found at a point of curvature thereon;

Thence, continuing with said centerline southeasterly along a curve to the right, defined by a 47 degree 23 minute 37 second central angle, an 127.45 foot radius, an 105.42 foot arc, and an 102.44 foot chord which bears South 40 degrees 14 minutes 40 seconds East, to a Mag-nail found marking its point of tangency thereon;

Thence, continuing with said centerline South 16 degrees 32 minutes 52 seconds East, a distance of 89.48 feet to a Mag-nail found marking its intersection with the centerline of the Mansfield-Crestline Road (U.S.R. 30 - N.);

Thence, northwesterly with said centerline along a curve to the left, defined by a 04 degree 22 minute 29 second central angle, a 12,277.67 foot radius, a 937.45 foot arc, and a 937.22 foot chord which bears North 78 degrees 58 minutes 54 seconds West, to the southeast corner of the above said Sharrock parcel;

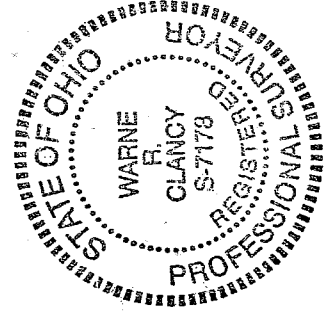
Thence, North 00 degrees 51 minutes 50 seconds East with the east line of said parcel, passing an iron pin found for reference at 66.08 feet, a distance of 401.37 feet to an iron pin found;

Thence, South 86 degrees 46 minutes 10 seconds East, a distance of 64.43 feet to the Place of Beginning, containing 5.431 acres of which 1.869 lie within the right-of-way of said U.S.R. 30 - N., but subject to all legal highways.

Iron pins set are #5 rebars with caps stamped "CLANCY 7178".

Bearings are based on Survey K-70.

Q-278



NEW SURVEY
OF EXISTING PARCEL
RICHLAND COUNTY
TAX MAP OFFICE

12.18.00

INITIAL DATE

Warne Clancy

Warne R. Clancy
Professional Surveyor #7178

anna