

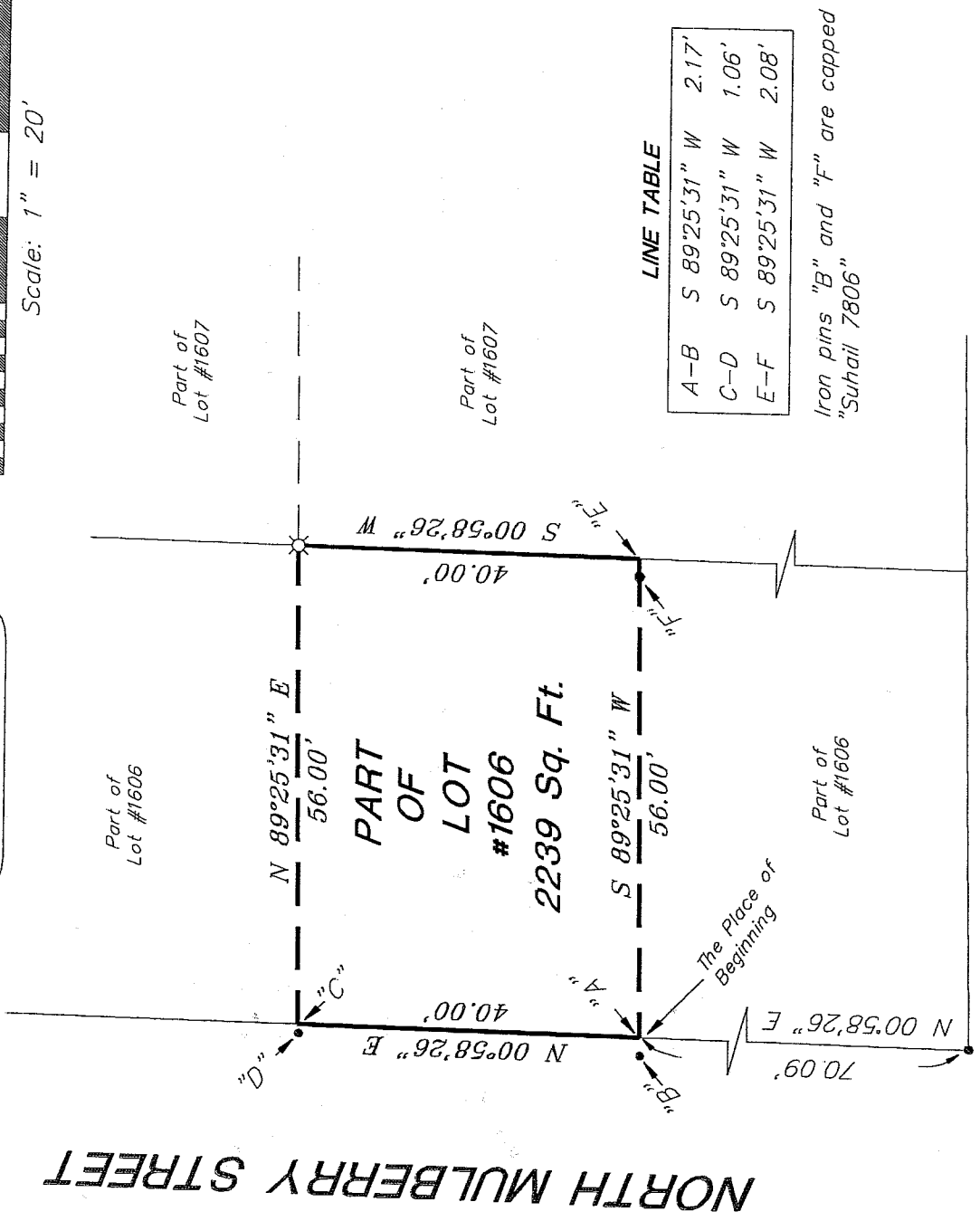
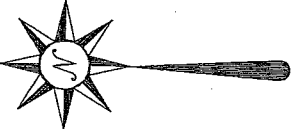
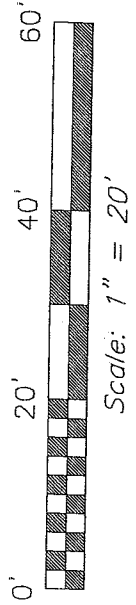
NO. 174

NOTE: The iron pin recovered at the SW corner of Lot #1606 was accepted for distance from the curb on both Harker Street and North Mulberry Street. The curb split on North Mulberry Street also checks an iron pin recovered at the SE corner of Lot # 1719. Other iron pins found along the east side of North Mulberry Street (in the vicinity of the SW and NW corners of Lot #1603 and the NW Corner of Lot #1597, in addition to the iron pin close to the SW corner of the subject parcel,) appear to be randomly located.

Bearings are based on an assumed meridian and are intended to be used for angular determination only.

LEGEND

- iron pin, found
- 5/8" iron pin with cap stamped "SEILER 6869", set



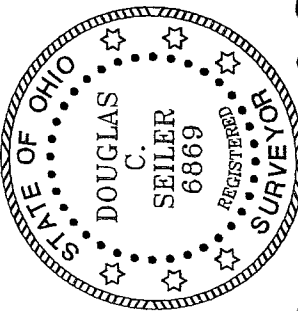
LINE TABLE

A-B	S 89°25'31" W	2.17'
C-D	S 89°25'31" W	1.06'
E-F	S 89°25'31" W	2.08'

Iron pins "B" and "F" are capped "Suhail 7806"

NORTH MULBERRY STREET

HARKER STREET



NEW SURVEY OF EXISTING PARCEL RICHLAND COUNTY TAX MAP OFFICE
 INITIAL DS DATE 10-9-02

Douglas C. Seiler 10/7/02

SURVEY BY: DOUGLAS C. SEILER
 PROFESSIONAL SURVEYOR #6869
 52-1/2 NORTH MAIN STREET
 MANSFIELD, OHIO 44902
 (419) 525-3644
 FA 525-3696

SURVEY PLAT FOR
PROPERTY TRANSFER
PART OF LOT #1606
CITY OF MANSFIELD
OHIO
DATE: OCTOBER 6, 2002
SCALE: 1"=20'
504nmul.dwa/.asc

Douglas C. Seiler

Professional Land Surveyor

52½ North Main • Mansfield, Ohio 44902
(419) 525-3644 • FAX (419) 525-3696

SURVEY DESCRIPTION

PART OF LOT #1606
CITY OF MANSFIELD, OHIO

Situated in the City of Mansfield, County of Richland, State of Ohio and being a part Lot #1606 of the consecutively numbered lots in said city, more particularly described as follows:

Beginning for the same at an iron pin found and accepted as marking the southwest corner of said lot; Thence, North 00 degrees 58 minutes 26 seconds East with the west line of said lot, a distance of 70.09 feet to the place of beginning, as referenced by an iron pin found capped "SUHAIL 7806" found on a bearing of South 89 degrees 25 minutes 31 seconds West and at a distance of 2.17 feet;

Thence, continuing North 00 degrees 58 minutes 26 seconds East with said west line, a distance of 40.00 feet to a point as referenced by an iron pin found on a bearing of South 89 degrees 25 minutes 31 seconds West and at a distance of 1.06 feet from said point;

Thence, North 89 degrees 25 minutes 31 seconds East a distance of 56.00 feet to an iron pin set;

Thence, South 00 degrees 58 minutes 26 seconds West a distance of 40.00 feet to a point;

Thence, South 89 degrees 25 minutes 31 seconds West, passing through an iron pin found capped "SUHAIL 7806" at 2.08 feet, a total distance of 56.00 feet to the place of beginning, containing 2239 square feet, according to survey by Douglas C. Seiler, Professional Surveyor #6869 on October 4, 2002.

Iron pins set are 5/8" rods with caps stamped "SEILER 6869".

Bearings are based on an assumed meridian and are intended to be used for angular determination only.

NEW SURVEY
OF EXISTING PARCEL
RICHLAND COUNTY
TAX MAP OFFICE

INITIAL DCS DATE 10-9-02



Douglas C. Seiler
Professional Surveyor #6869

Q-174