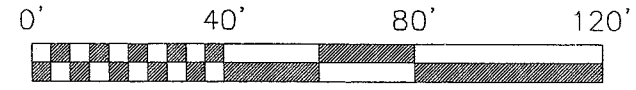


Q-102

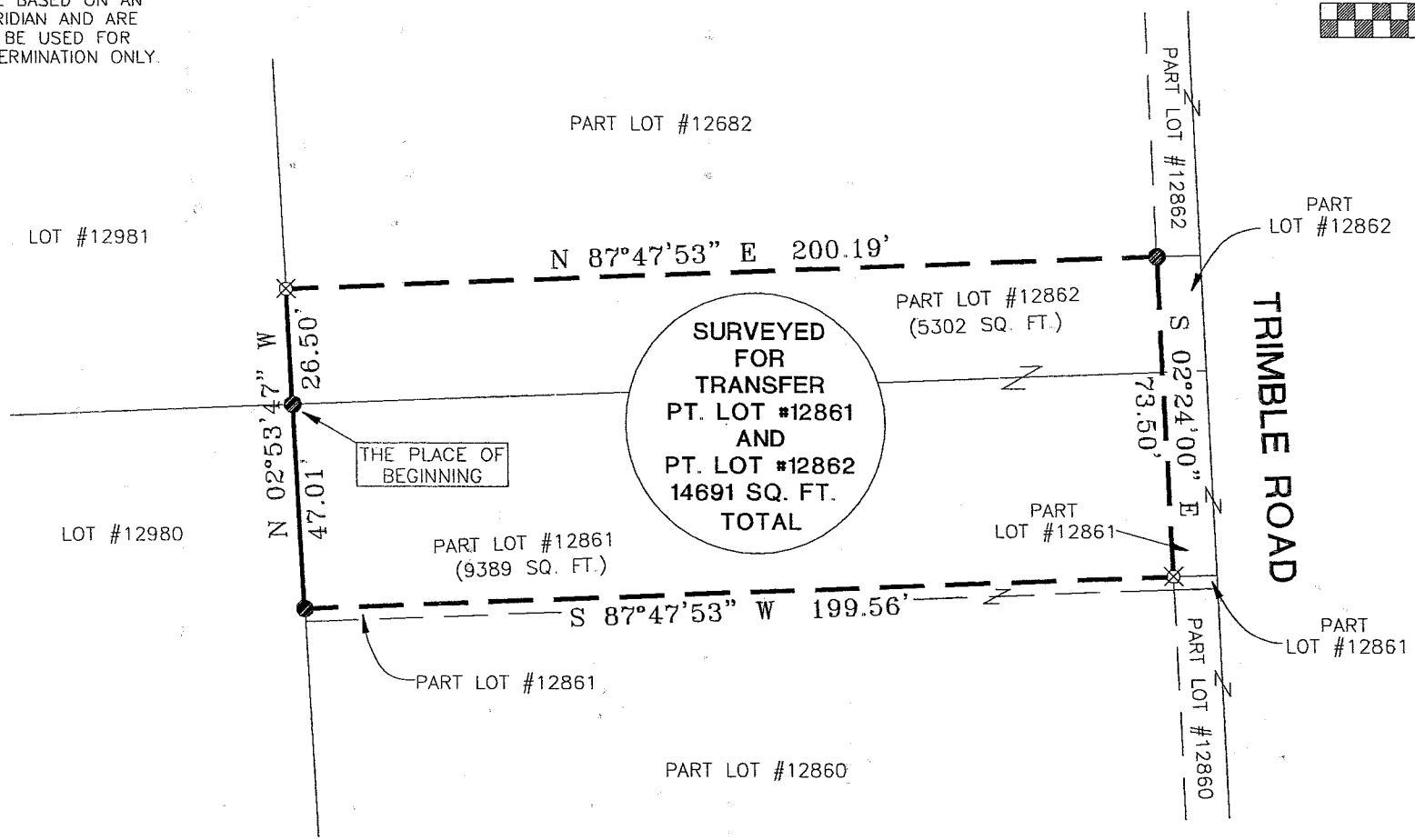
NORTH



BEARINGS ARE BASED ON AN ASSUMED MERIDIAN AND ARE INTENDED TO BE USED FOR ANGULAR DETERMINATION ONLY.



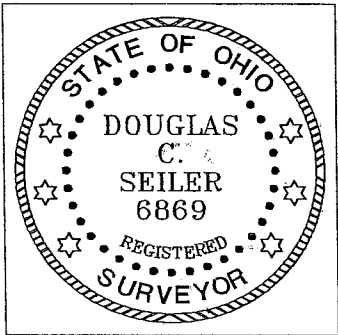
SCALE: 1" = 40'



LEGEND

- IRON PIN FOUND
- ⊗ IRON PIN SET WITH CAP STAMPED "SEILER 6869" SET.

Douglas C. Seiler
 SURVEYED BY: DOUGLAS C. SEILER
 PROFESSIONAL SURVEYOR #6869
 52-1/2 NORTH MAIN STREET
 MANSFIELD, OHIO 44902
 (419) 525-3644
 FAX (419) 525-3696



NEW SURVEY
 OF EXISTING PARCEL
 RICHLAND COUNTY
 TAX MAP OFFICE
JS 8-27-02
 INITIAL DATE

SURVEY PLAT FOR	
PROPERTY TRANSFER	
PART LOT #12861 AND PART LOT #12862	
CITY OF MANSFIELD	
OHIO	
DATE: AUGUST 22, 2002	SCALE: 1"=40'
60TRIMBL.DWG	

Douglas C. Seiler

Professional Land Surveyor

52½ North Main • Mansfield, Ohio 44902
(419) 525-3644 • FAX (419) 525-3696

SURVEY DESCRIPTION

PART OF LOT #12862
and
PART OF LOT #12861
CITY OF MANSFIELD, OHIO

Situated in the City of Mansfield, County of Richland, State of Ohio and being a part of Lot #12862 and a part of Lot #12861 of the consecutively numbered lots in said city, more particularly described as follows:

Beginning for the same at an iron pin found and accepted as marking the southwest corner of said Lot #12862; Thence, North 02 degrees 53 minutes 47 seconds West with the west line of said lot, a distance of 26.50 feet to an iron pin set;

Thence, North 87 degrees 47 minutes 53 seconds East a distance of 200.19 feet to an iron pin found on the westerly line of Trimble Road;

Thence, South 02 degrees 24 minutes 00 seconds East with said westerly line, a distance of 73.50 feet to an iron pin set;

Thence, South 87 degrees 47 minutes 53 seconds West a distance of 199.56 feet to an iron pin found on the west line of said Lot #12861;

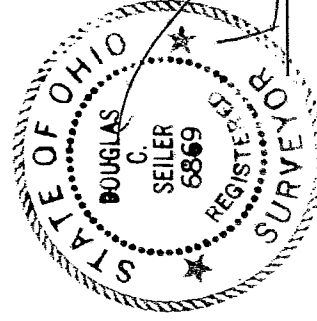
Thence, North 02 degrees 53 minutes 47 seconds West with said west line, a distance of 47.01 feet to the place of beginning, containing a total of 14691 square feet, of which 5302 square feet are located within part of said Lot #12862, and 9389 square feet are located within part of said Lot #12861, according to survey by Douglas C. Seiler, Professional Surveyor #6869 on August 22, 2002.

Iron pins set are 5/8" rods with caps stamped "SEILER 6869".

Bearings are based on an assumed meridian and are intended to be used for angular determination only.

NEW SURVEY
OF EXISTING PARCEL
RICHLAND COUNTY,
TAX MAP. OFFICE

INITIAL DS
DATE 8-27-02



Douglas C. Seiler
Douglas C. Seiler
Professional Surveyor #6869