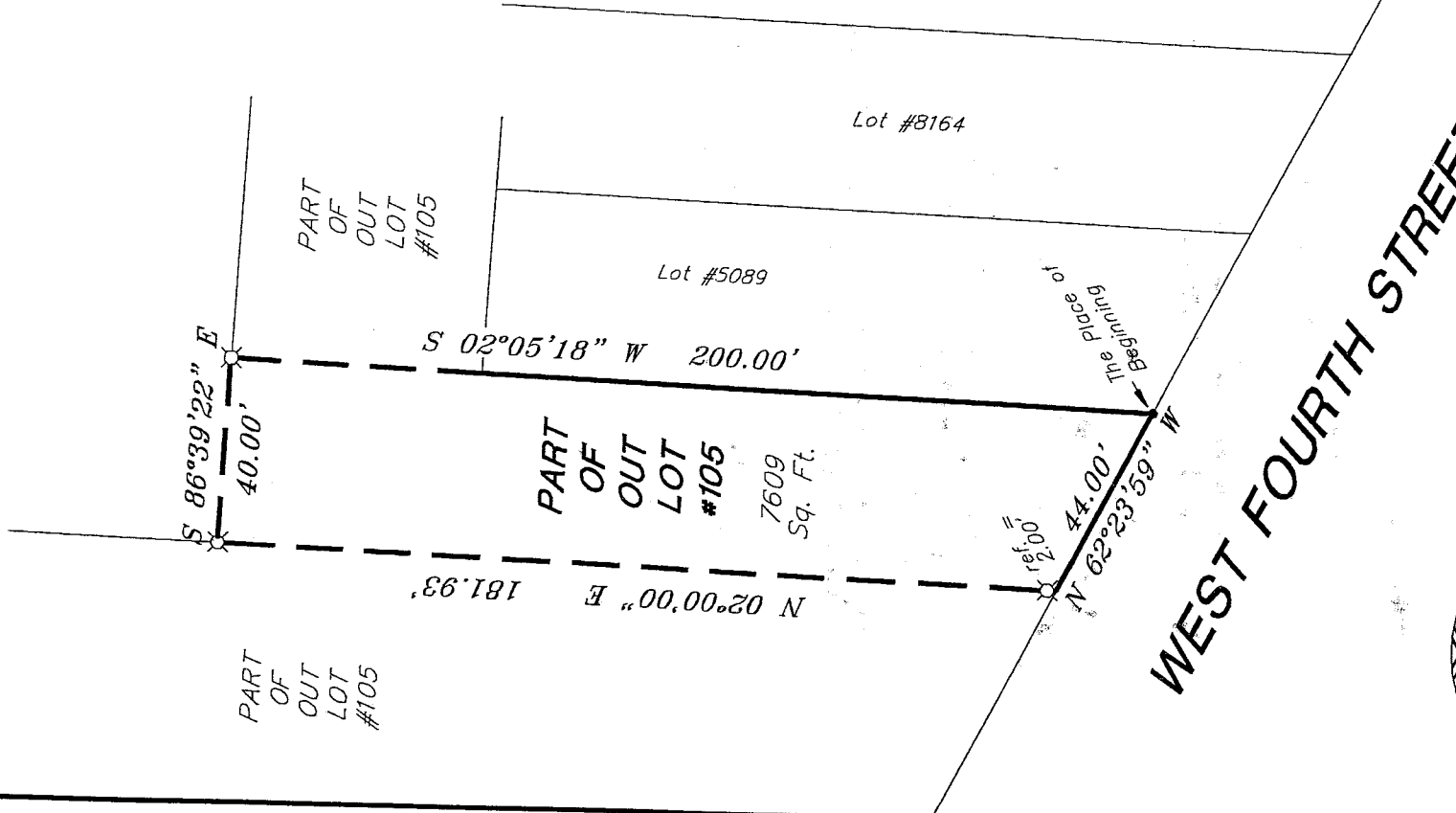
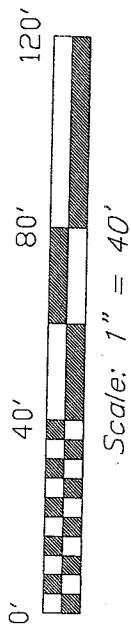
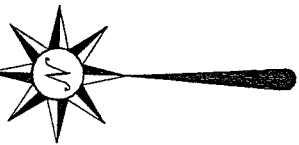
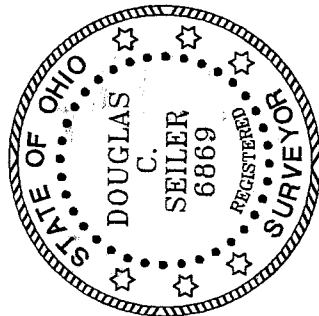


W08079

Bearings are based on an assumed meridian and are intended to be used for angular determination only.



⌘ 5/8" iron pin with cap stamped "SEILER 6869", set
• iron pin found



Douglas C. Seiler

SURVEY BY: DOUGLAS C. SEILER
PROFESSIONAL SURVEYOR #6869
52-1/2 NORTH MAIN STREET
MANSFIELD, OHIO 44902
(419) 525-3644
FAX (419) 525-3696

NEW SURVEY
OF EXISTING PARCEL
RICHLAND COUNTY
TAX MAP. OFFICE
DATE 8-16-02
INITIAL *DS*

SURVEY PLAT FOR
PROPERTY TRANSFER
PART OF OUT LOT 105
CITY OF MANSFIELD
OHIO

DATE: AUG. 14, 2002 SCALE: 1" = 40'
492w4th.asc/.dwg

Q-86

Q-86

Douglas C. Seiler

Professional Land Surveyor

52½ North Main • Mansfield, Ohio 44902
(419) 525-3644 • FAX (419) 525-3696

SURVEY DESCRIPTION

PART OF OUT LOT 105
CITY OF MANSFIELD, OHIO

Situated in the City of Mansfield, County of Richland, State of Ohio and being a part of Out Lot 105, more particularly described as follows:

Beginning for the same at an iron pin found and accepted as marking the southwest corner of Lot #5089 in said city, the same being an existing corner of said Out Lot; Thence, North 62 degrees 23 minutes 59 seconds West with the north line of West Fourth Street, a distance of 44.00 feet;

Thence, North 02 degrees 00 minutes 00 seconds East, passing through an iron pin set for reference at 2.00 feet, a total distance of 181.93 feet to an iron pin set;

Thence, South 86 degrees 39 minutes 22 seconds East a distance of 40.00 feet to an iron pin set;

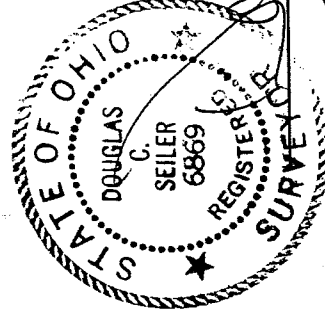
Thence, South 02 degrees 05 minutes 18 seconds West a distance of 200.00 feet to the place of beginning, containing 7609 square feet, according to survey by Douglas C. Seiler, Professional Surveyor #6869 on August 14, 2002.

Iron pins set are 5/8" rods with caps stamped "SEILER 6869".

Bearings are based on an assumed meridian and are intended to be used for angular determination only.

NEW SURVEY
OF EXISTING PARCEL
RICHLAND COUNTY
TAX MAP OFFICE

INITIAL DCS DATE 8.16.02



Douglas C. Seiler
Professional Surveyor #6869