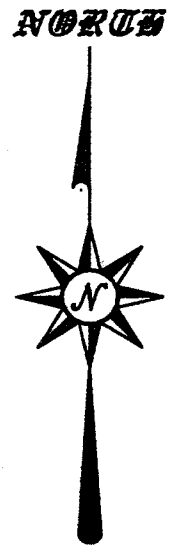
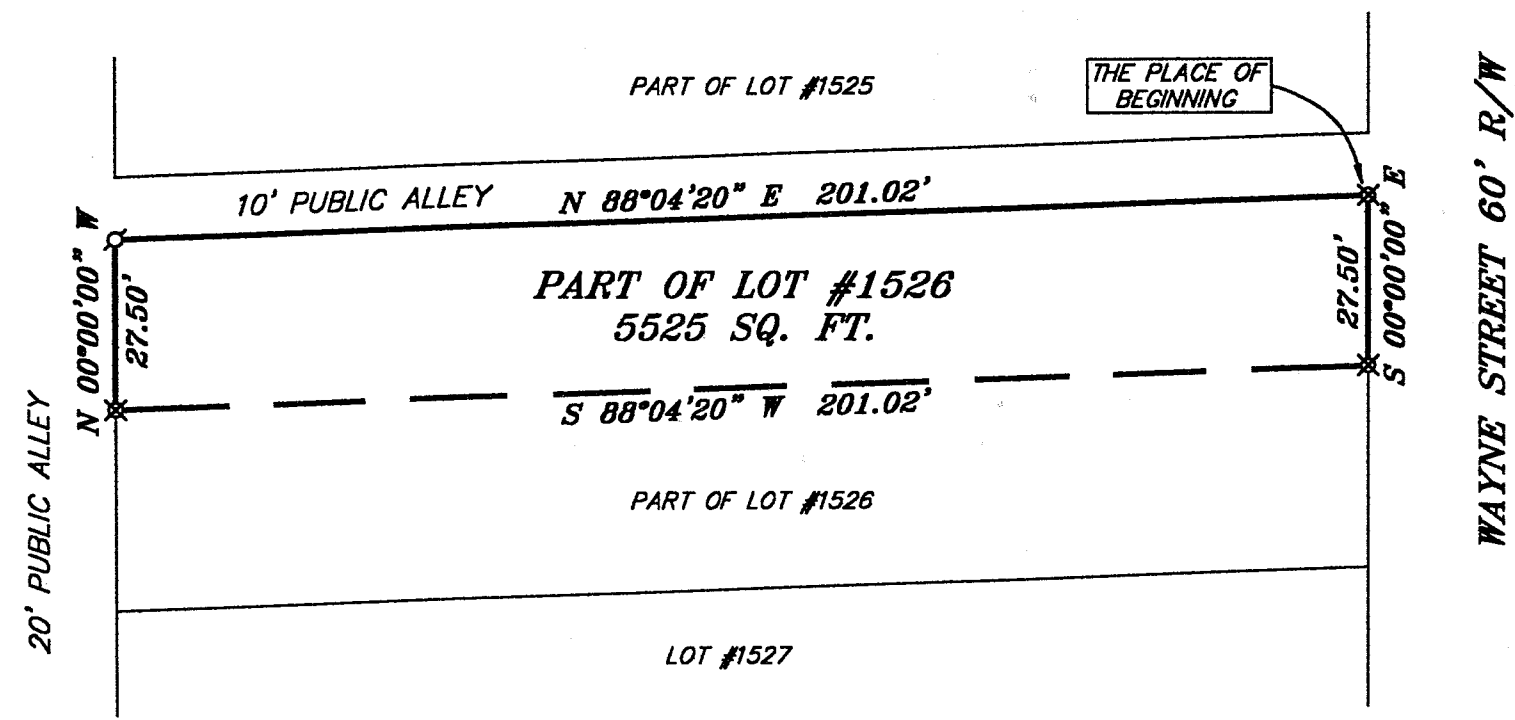
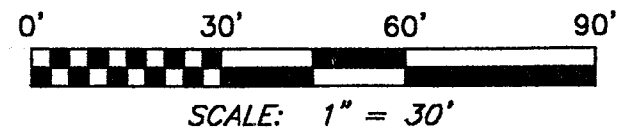


Q-55



LEGEND

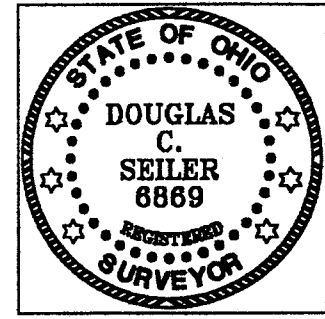
⊗ - IRON PIN SET WITH CAP
STAMPED "SEILER 6869"

⊙ - MAG NAIL SET

BEARINGS ARE BASED ON AN ASSUMED
MERIDIAN AND ARE INTENDED TO BE USED
FOR ANGULAR DETERMINATION ONLY.

Douglas C. Seiler

SURVEYED BY: DOUGLAS C. SEILER
PROFESSIONAL SURVEYOR #6869
52-1/2 NORTH MAIN STREET
MANSFIELD, OHIO 44902
(419) 525-3644
FAX (419) 525-3696



NEW SURVEY
OF EXISTING PARCEL
RICHLAND COUNTY
TAX MAP OFFICE

JS *7/29/02*
INITIAL DATE

SURVEY PLAT FOR PROPERTY TRANSFER	
KOHNE	
PART OF LOT #1526, CITY OF MANSFIELD, RICHLAND COUNTY, OHIO	
DATE: JULY 25, 2002	SCALE: 1"=30'
339wyne.dwg	

Q-55

Douglas C. Seiler
Professional Land Surveyor
52½ North Main • Mansfield, Ohio 44902
(419) 525-3644

SURVEY DESCRIPTION

PART OF LOT #1526
CITY OF MANSFIELD, OHIO

Situated in the City of Mansfield, County of Richland, State of Ohio and being a part of Lot #1526 of the consecutively numbered lots in said city, more particularly described as follows:

Beginning for the same at an iron pin set marking the northeast corner of said lot; Thence, South 00 degrees 00 minutes 00 seconds East with the east line of said lot, a distance of 27.50 feet to an iron pin set;

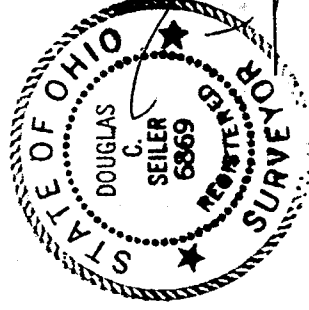
Thence, South 88 degrees 04 minutes 20 seconds West a distance of 201.02 feet to an iron pin set on the west line of said lot;

Thence, North 00 degrees 00 minutes 00 seconds West with said west line, a distance of 27.50 feet to a Mag Nail spike set marking the northwest corner of said lot;

Thence, North 88 degrees 04 minutes 20 seconds East with the north line of said lot, a distance of 201.02 feet to the place of beginning, containing 5525 square feet, according to survey by Douglas C. Seiler, Professional Surveyor #6869 on July 25, 2002.

Iron pins set are 5/8" rods with caps stamped "SEILER 6869".

Bearings are based on an assumed meridian and are intended to be used for angular determination only.



Douglas C. Seiler

Douglas C. Seiler
Professional Surveyor #6869

NEW SURVEY
OF EXISTING PARCEL
RICHLAND COUNTY
TAX MAP OFFICE
A 7-21-02

INITIAL DATE

Q-55

Q-55