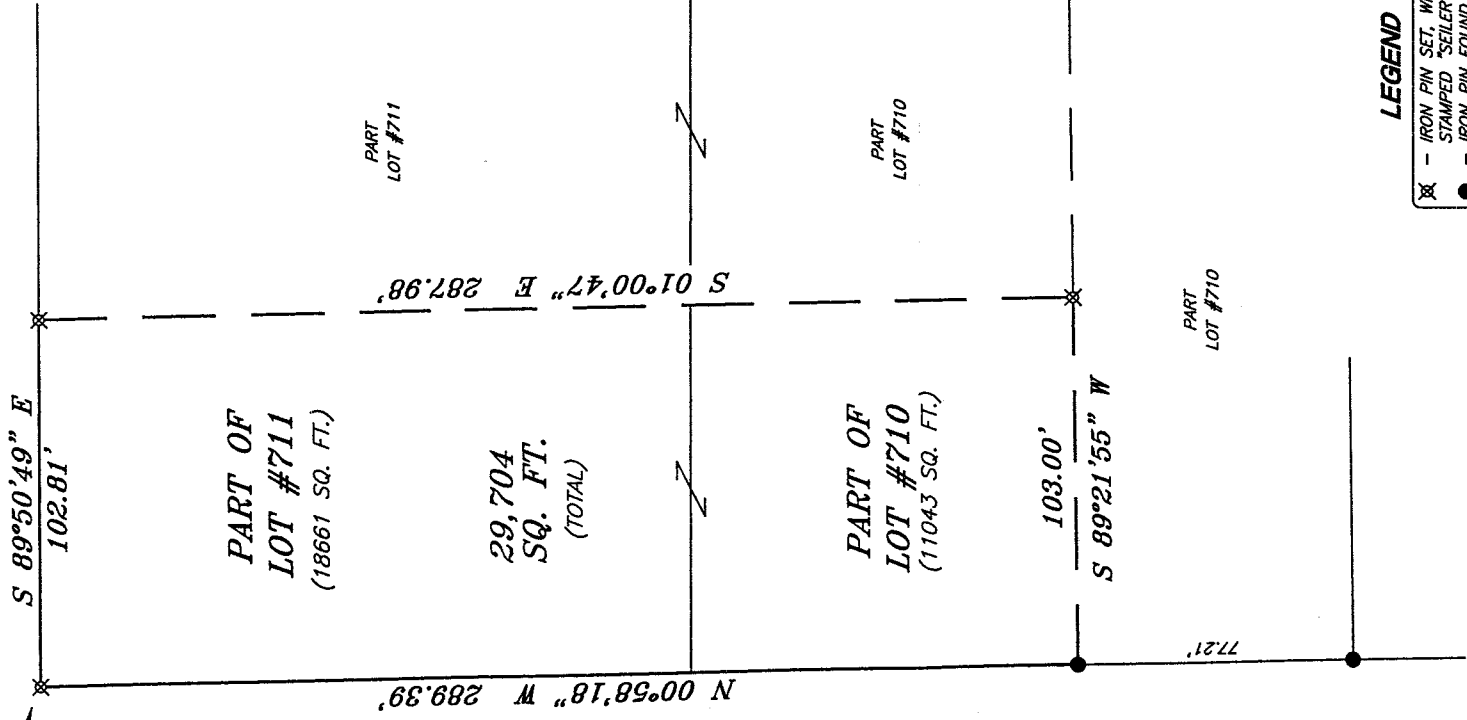


AVORON

PARK AVENUE WEST 60' R/W

THE PLACE OF BEGINNING



S 89°50'49" E  
102.81'

PART OF  
LOT #711  
(18661 SQ. FT.)

29,704  
SQ. FT.  
(TOTAL)

S 01°00'47" E 287.98'

PART  
LOT #711

N 00°58'18" W 289.39'

LYNN ROAD 50' R/W

PART OF  
LOT #710  
(11043 SQ. FT.)

103.00'  
S 89°21'55" W

PART  
LOT #710

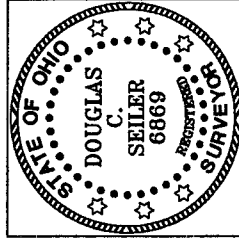
77.21'

BEARINGS ARE BASED ON SURVEY C-99,  
ON FILE AT THE RICHLAND COUNTY TAX  
MAP OFFICE, AND ARE INTENDED TO BE  
USED FOR ANGULAR DETERMINATION ONLY.

LEGEND

- ✕ - IRON PIN SET, WITH CAP STAMPED "SEILER 6869"
- - IRON PIN FOUND

NEW SURVEY  
OF EXISTING PARCEL  
RICHLAND COUNTY  
TAX MAP OFFICE  
INITIAL: LAH DATE: 7-19-02



*Douglas C. Seiler* 7/18/02  
 SURVEYED BY: DOUGLAS C. SEILER  
 PROFESSIONAL SURVEYOR #6869  
 52 1/2 NORTH MAIN STREET  
 MANSFIELD, OHIO 44902  
 (419) 525-3644  
 FAX (419) 525-3696

SURVEY PLAT FOR  
 LAURIE HICKOX, D.V.M.  
 PART OF LOT #710 & PART OF #711,  
 CITY OF ONTARIO,  
 OHIO  
 DATE: JULY 16, 2002 SCALE: 1"=40'  
 pawlynn.dwg

Q-41

Q-41

# Douglas C. Seiler

Professional Land Surveyor

52½ North Main • Mansfield, Ohio 44902  
(419) 525-3644 • FAX (419) 525-3696

## SURVEY DESCRIPTION

PART OF LOT #710 and PART OF LOT #711  
CITY OF ONTARIO, OHIO

Situated in the City of Ontario, County of Richland, State of Ohio and being a part of Lot #710 and a part of Lot #711 of the consecutively numbered lots in said city, more particularly described as follows:

Beginning for the same at an iron pin set marking the northwest corner of said Lot #711; Thence, South 89 degrees 50 minutes 49 seconds East with the north line of said lot, a distance of 102.81 feet to an iron pin set;

Thence, South 01 degree 00 minutes 47 seconds East a distance of 287.98 feet to an iron pin set;

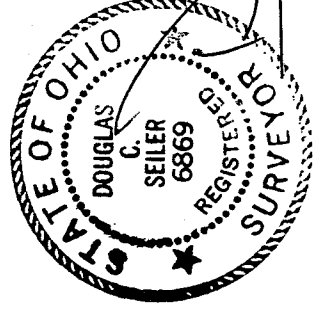
Thence, South 89 degrees 21 minutes 55 seconds West a distance of 103.00 feet to an iron pin found on the east line of Lynn Road (50' R/W);

Thence, North 00 degrees 58 minutes 18 seconds West with said east line, a distance of 289.39 feet to the place of beginning, containing a total of 29704 square feet, of which 18661 square feet are located within part of said Lot #711, and 11043 square feet are located within part of said Lot #710, according to survey by Douglas C. Seiler, Professional Surveyor #6869 on July 16, 2002.

Iron pins set are 5/8" rods with caps stamped "SEILER 6869".

Bearings are based on survey C-99 on file at the Richland County Tax Map Department and are intended to be used for angular determination only.

NEW SURVEY  
OF EXISTING PARCEL  
RICHLAND COUNTY  
TAX MAP OFFICE  
7-19-02  
DATE  
7-19-02  
INITIAL



Douglas C. Seiler  
Professional Surveyor #6869

Q-41