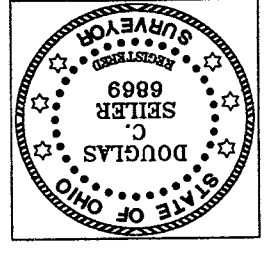


Q-36

Q-36

SURVEYED BY: DOUGLAS C. SELLER
PROFESSIONAL SURVEYOR #6869
52-1/2 NORTH MAIN STREET
MANSFIELD, OHIO 44902
(419) 525-3644
FAX (419) 525-3696

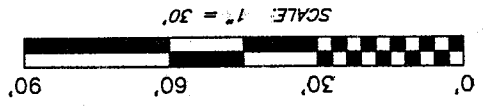
Douglas C. Sellar
7/17/02



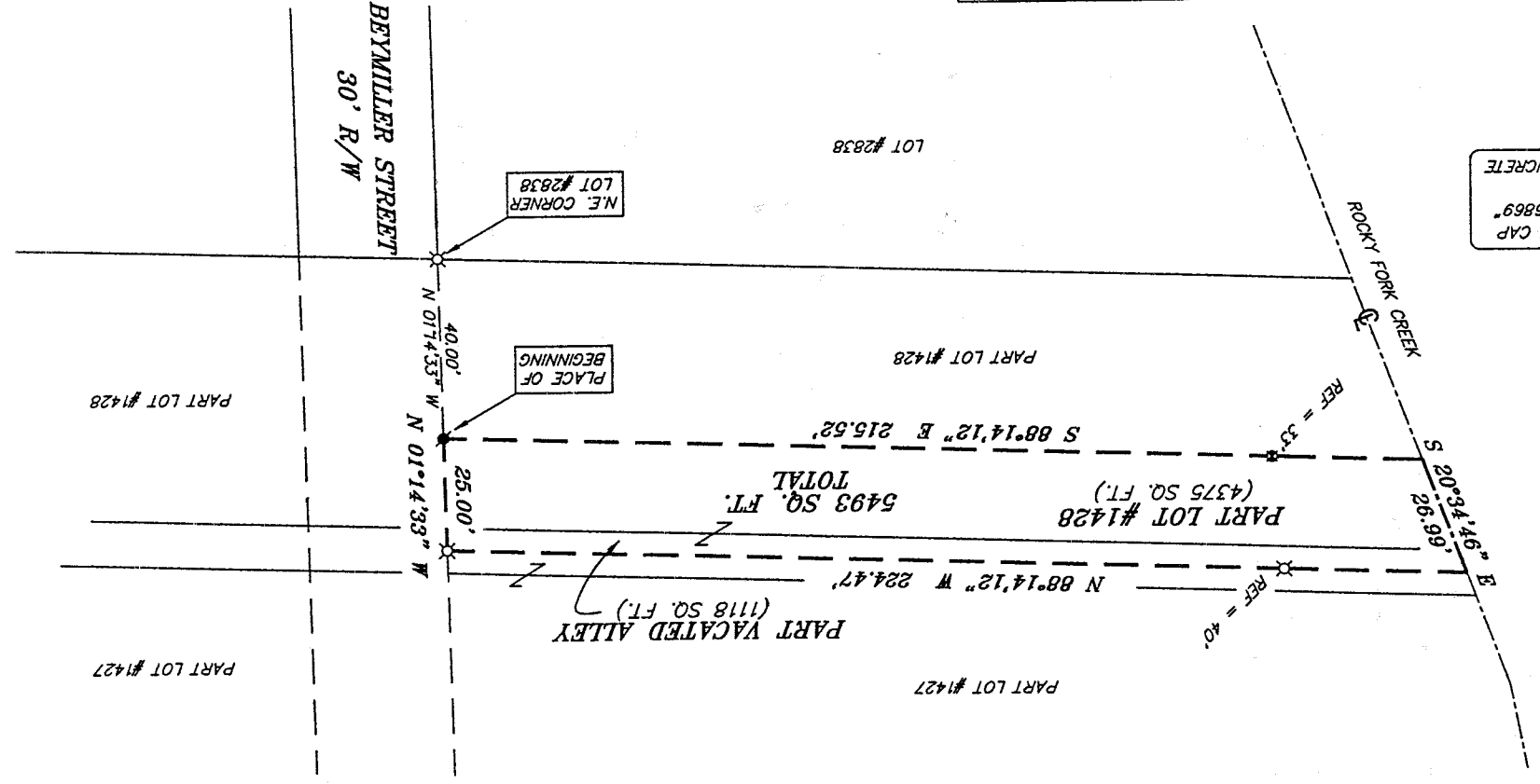
NEW SURVEY
OF EXISTING PARCEL
RICHLAND COUNTY
TAX MAP OFFICE
DATE 7-19-02

SURVEY PLAT FOR
PROPERTY TRANSFER
PT. LOT #1428 & PT. VACATED ALLEY
CITY OF MANSFIELD
RICHLAND COUNTY, OHIO
DATE: JULY 11, 2002
SCALE: 1"=30'
ct13640.dwg

LEGEND
■ - IRON PIN SET WITH CAP
✱ - STAMPED "SELLER 6869"
✱ - IRON PIN FOUND
■ - DRILL HOLE IN CONCRETE



BEARINGS ARE BASED ON A SURVEY BY
S.J.L. INC., ON FILE AT THE RICHLAND COUNTY
TAX MAP OFFICE, AND ARE INTENDED TO BE
USED FOR ANGULAR DETERMINATION ONLY.



BEYMILLER STREET
30' R/W

ROCKY FORK CREEK

LOT #2838

PART LOT #1428

PART LOT #1427

PART LOT #1428

PART LOT #1427

N.E. CORNER
LOT #2838

PLACE OF
BEGINNING

PART LOT #1428
(4375 SQ. FT.)
TOTAL
5493 SQ. FT.

PART VACATED ALLEY
(1118 SQ. FT.)

N 01°14'33" W 25.00'
N 01°14'33" W 40.00'
N 07°14'33" W 25.00'

S 88°14'12" E 215.52'

N 88°14'12" W 224.47'

PART LOT #1428

REF = 35'

REF = 40'

S 20°34'46" E
26.99'

Douglas C. Seiler

Professional Land Surveyor

52½ North Main • Mansfield, Ohio 44902
(419) 525-3644 • FAX (419) 525-3696

SURVEY DESCRIPTION

PART OF LOT #1428 and
PART OF A VACATED ALLEY
CITY OF MANSFIELD, OHIO

Situated in the City of Mansfield, County of Richland, State of Ohio and being part of a vacated alley, and a part of Lot #1428 of the consecutively numbered lots in said city, the entire parcel being more particularly described as follows:

Commencing at an iron pin found and accepted as marking the northeast corner of Lot #2838 in said city; Thence, North 01 degree 14 minutes 33 seconds West a distance of 40.00 feet to a drill hole in concrete set, the place of beginning of the parcel herein described;

Thence, continuing North 01 degree 14 minutes 33 seconds West a distance of 25.00 feet to an iron pin found;

Thence, North 88 degrees 14 minutes 12 seconds West, passing through an iron pin found at 184.47 feet, a total distance of 224.47 feet to a point on the centerline of the Rocky Fork;

Thence, South 20 degrees 34 minutes 46 seconds East with said Rocky Fork, a distance of 26.99 feet;

Thence, South 88 degrees 14 minutes 12 seconds East, passing through an iron pin set for reference at 33.00 feet, a total distance of 215.52 feet to the place of beginning, containing a total of 5493 square feet, of which 4375 square feet are located within part of said Lot #1428, and 1118 square feet are located within part of said vacated alley, according to survey by Douglas C. Seiler, Professional Surveyor #6869 on July 16, 2002.

Iron pins set are 5/8" rods with caps stamped "SEILER 6869".

Bearings are based on a survey by SJL, Inc. on file at the Richland County Tax Map Office, and are intended to be used for angular determination only.

NEW SURVEY
OF EXISTING PARCEL
RICHLAND COUNTY
TAX MAP OFFICE

DS
7-19-02
INITIAL DATE



Douglas C. Seiler
Douglas C. Seiler
Professional Surveyor #6869

Q-36