

0-321

SURVEY PLAT

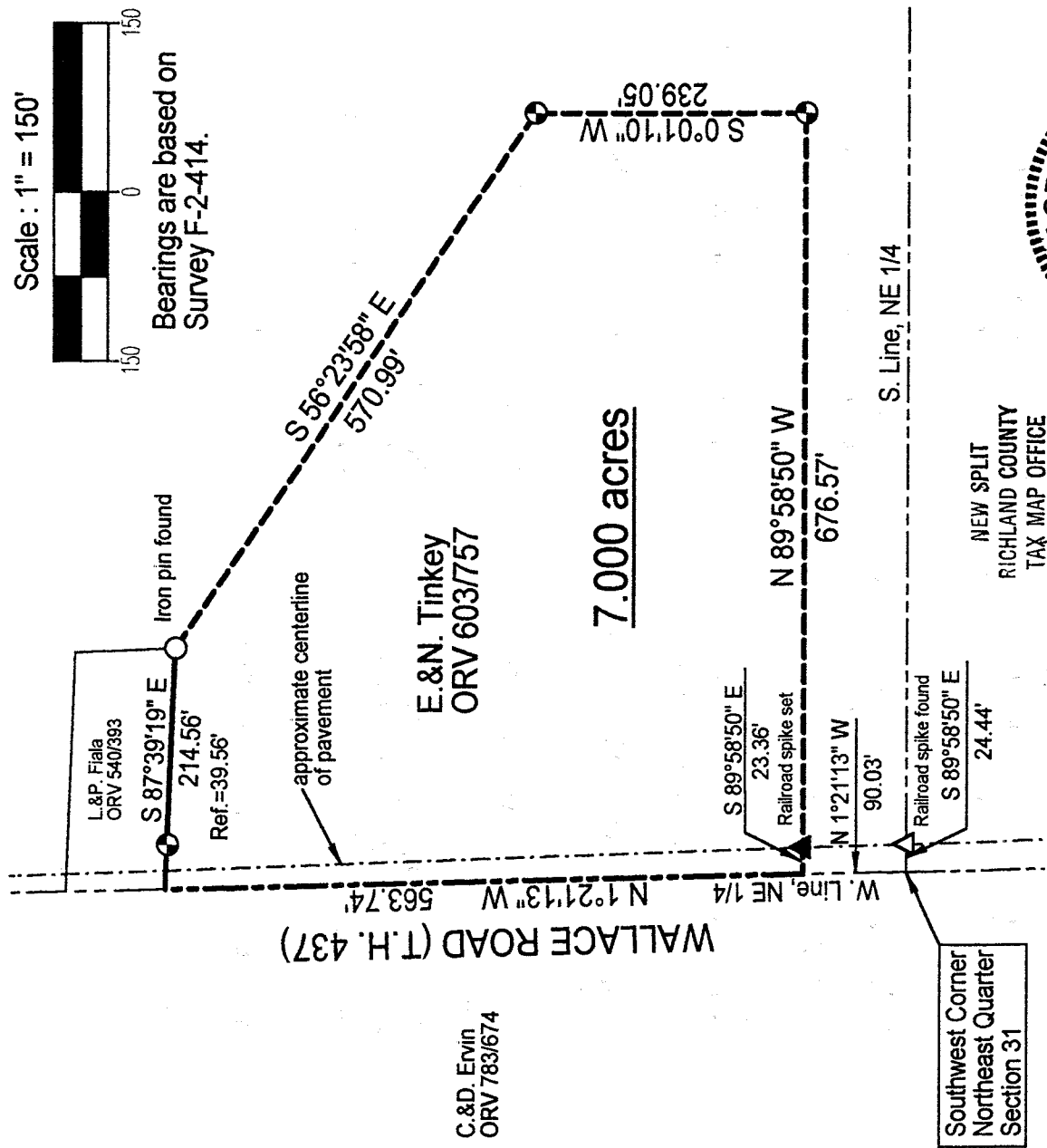
Part Northeast Quarter, Section 31

Mifflin Township, T-23, R-17

Richland County, Ohio



Bearings are based on Survey F-2-414.



C.&D. Ervin
ORV 783/674

E.&N. Tinkey
ORV 603/757

7.000 acres

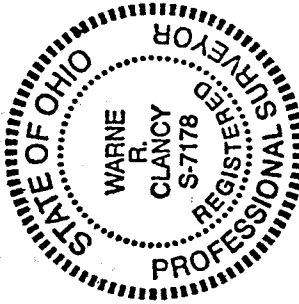
Southwest Corner
Northeast Quarter
Section 31

NEW SPLIT
RICHLAND COUNTY
TAX MAP OFFICE

INITIAL *W* DATE 11/20/01

LEGEND

● Iron pin set with cap stamped "CLANCY 7178"



OK - 11-14-01
B.C. Weckley
Mifflin Day
Spring Day

DATE: 10/30/01
JOB NO.: W102901

Warne R. Clancy
Warne R. Clancy
P.S. #7178

0-321

SURVEY DESCRIPTION

Part Northeast Quarter, Section 31
Mifflin Township, T-23, R-17
Richland County, Ohio

Situated in the Township of Mifflin, County of Richland, State of Ohio, and being a part of the Northeast Quarter of Section 31 of Township 23, Range 17, more particularly described as follows:

Commencing for the same at the southwest corner of said northeast quarter as referenced by a Railroad spike found South 89 degrees 58 minutes 50 seconds East, a distance of 24.44 feet; Thence, North 01 degrees 21 minutes 13 seconds West with the west line of said quarter, a distance of 90.03 feet to a point thereon as referenced by a Railroad spike set South 89 degrees 58 minutes 50 seconds East, a distance of 23.36 feet, the Place of Beginning;

Thence, continuing with said west line North 01 degrees 21 minutes 13 seconds West, a distance of 563.74 feet to the southwest corner of an existing parcel owned by L.&P. Fiala (OR V 540/393);

Thence, South 87 degrees 39 minutes 19 seconds East with the south line of said parcel, passing an iron pin set for reference at 39.56 feet, a distance of 214.56 feet to an iron pin found marking the southeast corner of said parcel;

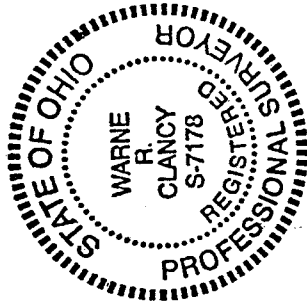
Thence, South 56 degrees 23 minutes 58 seconds East, a distance of 570.99 feet to an iron pin set;

Thence, South 00 degrees 01 minutes 10 seconds West, a distance of 239.05 feet to an iron pin set;

Thence, North 89 degrees 58 minutes 50 seconds West, passing a Railroad spike set for reference at 653.21 feet, a distance of 676.57 feet to the Place of Beginning, containing 7.000 acres according to survey by Warne R. Clancy, Professional Surveyor #7178, on October 29, 2001.

Iron pins set are #5 rebars with caps stamped "CLANCY 7178".

Bearings are based on Survey F-2-414.



11-14-01

B.P. Buckley
Young & Assoc.
Mifflin Twp.

NEW SPLIT
RICHLAND COUNTY
TAX MAP OFFICE

INITIAL *BC* DATE 11/2001

Warne R. Clancy
Warne R. Clancy
Professional Surveyor #7178

0-321

0-321