

R. Oney
801 P. 558

N. Line of SE 1/4

T. Blankenship
V. 783 P. 506

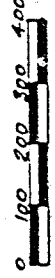
5.000 AC

4.427 in SE 1/4
5.0.573 in SW 1/4

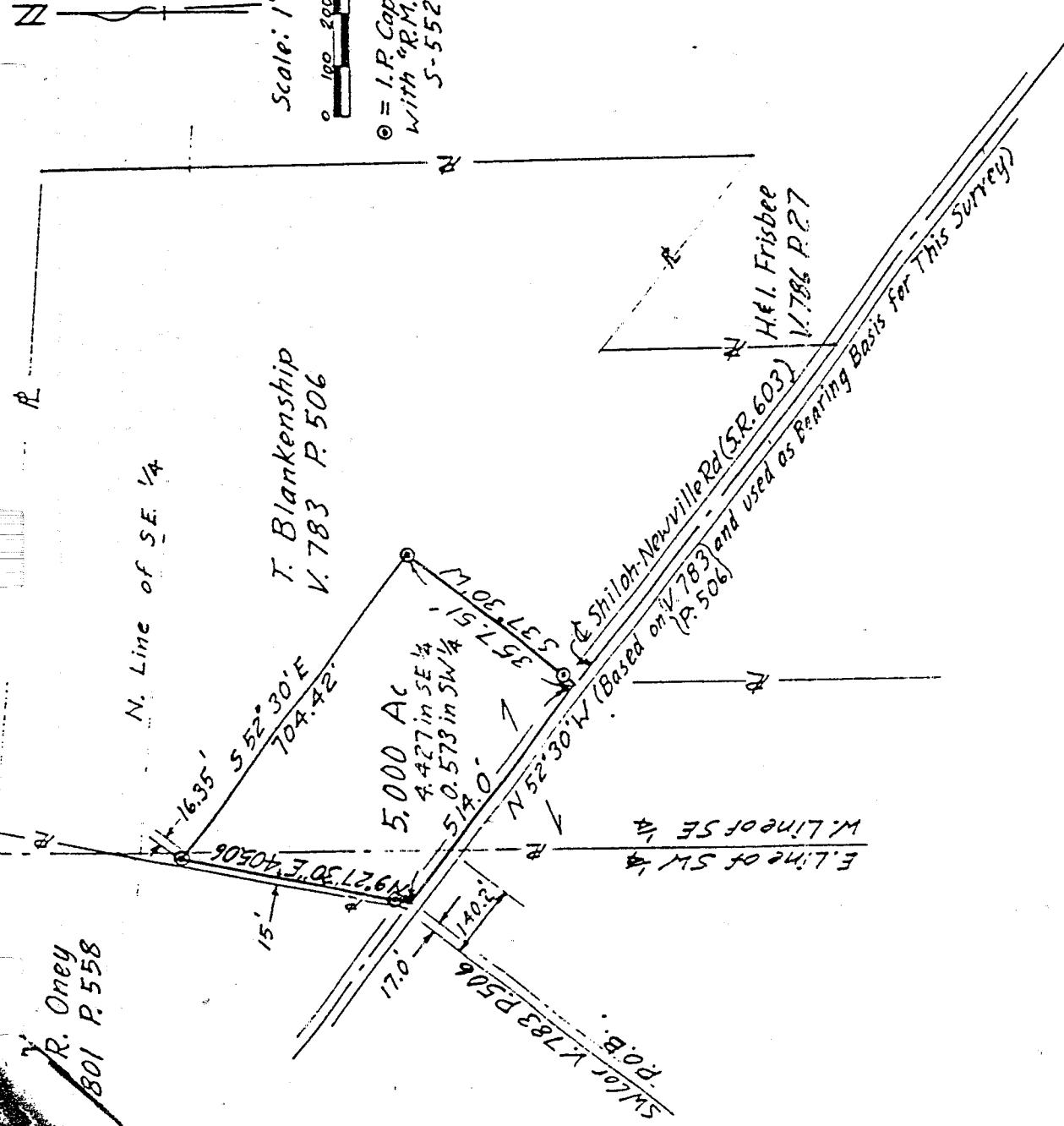
SW 1/4 of V. 783 P. 506
P.O.B.

E. Line of SW 1/4
W. Line of SE 1/4

Scale: 1" = 300'



© = I.P. Capped
With "R.M. Little
5-5524"



H. I. Frisbee
V. 786 P. 27

DRAWING OF SURVEY
FOR TROY BLANKENSHIP

PART OF SE & SW 1/4 SECTION 28
TOWNSHIP 23 RANGE 18
BLOOMINGGROVE TOWNSHIP
RICHLAND COUNTY, OHIO

Robert M. Little
Robert M. Little
Registered Surveyor # Ohio 5524
August 13, 1988

DR INITIAL
10-23-90 DATE
TRANSFER APPROVED
FREEMAN J. SVANK
RICHLAND CO. AUDITOR

APPROVED
TAX MAP OFFICE
EAN INITIAL
10-23-90 DATE
0308