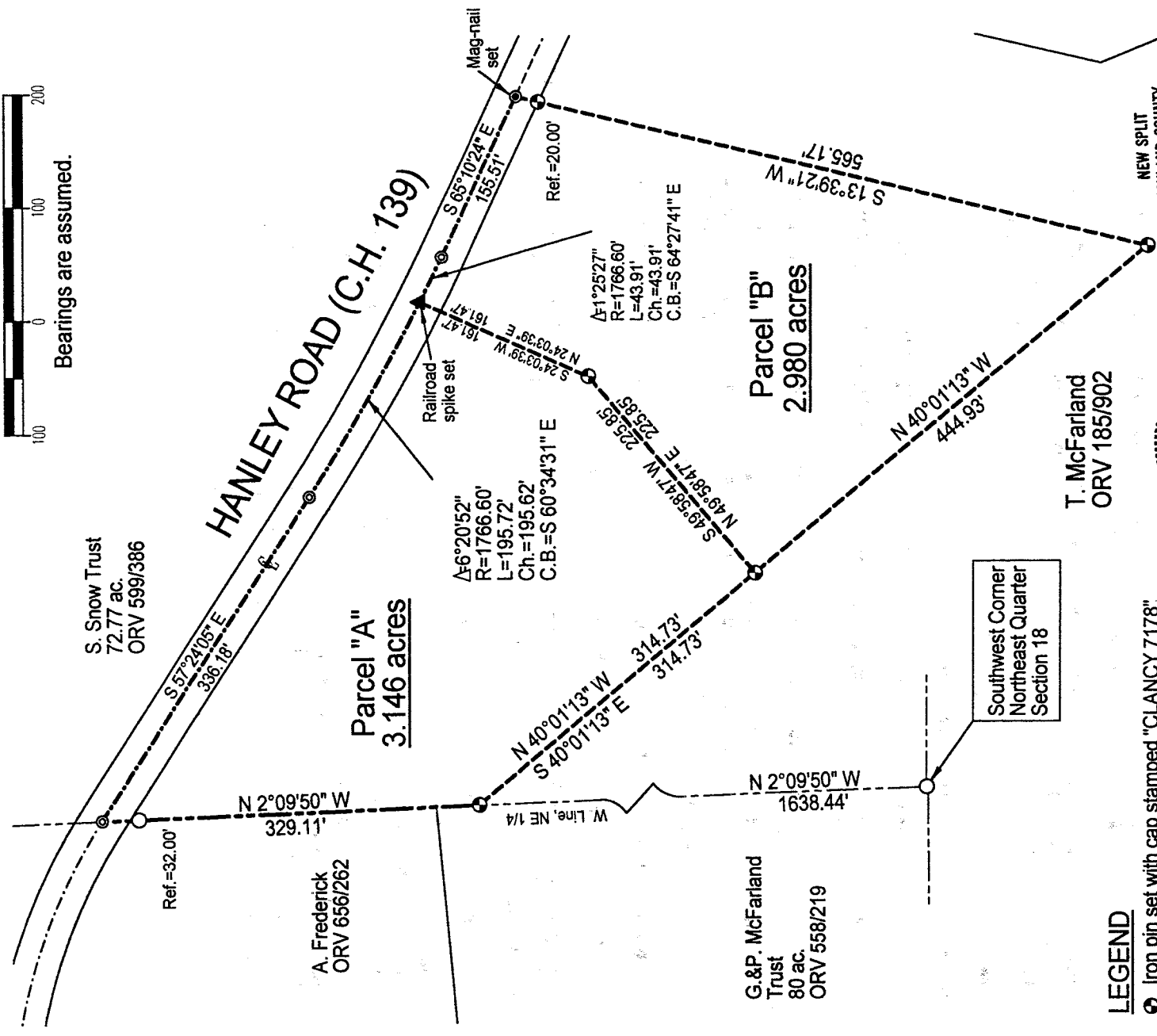
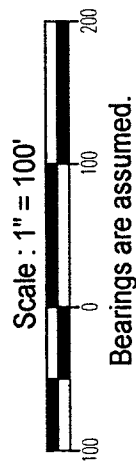
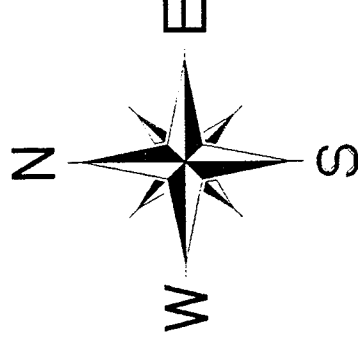


# SURVEY PLAT

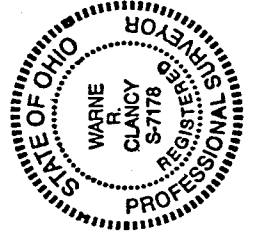
For Tom McFarland  
Part Northeast Quarter, Section 18  
Monroe Township, T-22, R-17  
Richland County, Ohio



### LEGEND

- Iron pin set with cap stamped "CLANCY 7178"
- Iron pin found
- ⊙ Mag-nail found

*MEETS - 8-28-2001  
mappe map 2001  
901 Wm R. McFarland*



NEW SPLIT  
RICHLAND COUNTY  
TAX MAP OFFICE  
INITIAL DATE  
9-6-01

*Warne R. Clancy*  
Warne R. Clancy  
P.S. #7178

DATE: 8/24/01  
JOB NO.: W071101

0-104

0-104

0-104

**SURVEY DESCRIPTION**

**Part Northeast Quarter, Section 18  
Monroe Township, T-22, R-17  
Richland County, Ohio**

Situated in the Township of Monroe, County of Richland, State of Ohio, and being a part of the Northeast Quarter of Section 18 of Township 22, Range 17, more particularly described as follows:

Commencing for the same at an iron pin found marking the southwest corner of said northeast quarter; Thence, North 02 degrees 09 minutes 50 seconds West with the west line of said quarter, a distance of 1638.44 feet to an iron pin set thereon, the Place of Beginning;

Thence, continuing with said west line North 02 degrees 09 minutes 50 seconds West, passing an iron pin found for reference at 297.11 feet, a distance of 329.11 feet to a Mag-nail found marking its intersection with the centerline of Hanley Road (C.H. 139);

Thence, South 57 degrees 24 minutes 05 seconds East with said centerline, a distance of 336.18 feet to a Mag-nail found marking a point of curvature thereon;

Thence, continuing southeasterly with said centerline along a curve to the left, defined by a 06 degree 20 minute 52 second central angle, an 1766.60 foot radius, an 195.72 foot arc, and an 195.62 foot chord which bears South 60 degrees 34 minutes 31 seconds East, to a Railroad spike set;

Thence, South 24 degrees 03 minutes 39 seconds West, a distance of 161.47 feet to an iron pin set;

Thence, South 49 degrees 58 minutes 47 seconds West, a distance of 225.85 feet to an iron pin set;

Thence, North 40 degrees 01 minutes 13 seconds West, a distance of 314.73 feet to the Place of Beginning, containing 3.146 acres according to survey by Warne R. Clancy, Professional Surveyor #7178, on July 11, 2001, but subject to all legal highways and easements of record.

Together with and subject to an easement for purposes of ingress/egress over an existing driveway.



*The Tax Map Office has a discrepancy on the property lines that our affecting Parcel A. The Surveyor has stated that he has done the research and his split is only out of "Megarlands Parcel".*

Parcel "A" - 3.146 acres

*Warne R. Clancy*

Warne R. Clancy  
Professional Surveyor #7178

*MEETS - 8-28-2001*

*Monroe Twp. 2001  
William R. [Signature]*

NEW SPLIT  
RICHLAND COUNTY  
TAX MAP OFFICE  
INITIAL *W* DATE *9-6-01*

*0-104*

**SURVEY DESCRIPTION**

**Part Northeast Quarter, Section 18  
Monroe Township, T-22, R-17  
Richland County, Ohio**

Situated in the Township of Monroe, County of Richland, State of Ohio, and being a part of the Northeast Quarter of Section 18 of Township 22, Range 17, more particularly described as follows:

Commencing for the same at an iron pin found marking the southwest corner of said northeast quarter; Thence, North 02 degrees 09 minutes 50 seconds West with the west line of said quarter, a distance of 1638.44 feet to an iron pin set thereon; Thence, South 40 degrees 01 minutes 13 seconds East, a distance of 314.73 feet to an iron pin set, the Place of Beginning;

Thence, North 49 degrees 58 minutes 47 seconds East, a distance of 225.85 feet to an iron pin set;

Thence, North 24 degrees 03 minute 39 seconds East, a distance of 161.47 feet to a Railroad spike set on the centerline of Hanley Road (C.H. 139);

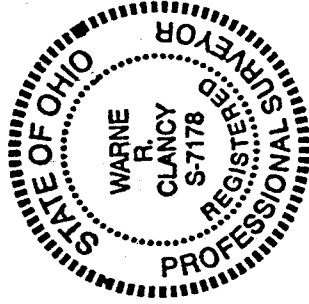
Thence, southeasterly with said centerline along a curve to the left, defined by a 01 degree 25 minute 27 second central angle, an 1766.60 foot radius, a 43.91 foot arc, and a 43.91 foot chord which bears South 64 degrees 27 minutes 41 seconds East, to a Mag-nail found;

Thence, continuing with said centerline South 65 degrees 10 minutes 24 seconds East, a distance of 155.51 feet to a Mag-nail set;

Thence, South 13 degrees 39 minutes 21 seconds West, passing an iron pin set for reference at 20.00 feet, a distance of 565.17 feet to an iron pin set;

Thence, North 40 degrees 01 minutes 13 seconds West, a distance of 444.93 feet to the Place of Beginning, containing 2.980 acres according to survey by Warne R. Clancy, Professional Surveyor #7178, on July 11, 2001, but subject to all legal highways and easements of record.

Together with and subject to an easement for purposes of ingress/egress over an existing driveway.



Parcel "B" - 2.980 acres

*Warne R. Clancy*

Warne R. Clancy  
Professional Surveyor #7178

*MEETS - 8-28-2001*

*Monroe Twp, 2001  
Warne R. Clancy*

NEW SPLIT  
RICHLAND COUNTY  
TAX MAP OFFICE

INITIAL *WRC* DATE *9-6-01*

*0-104*

*0-104*