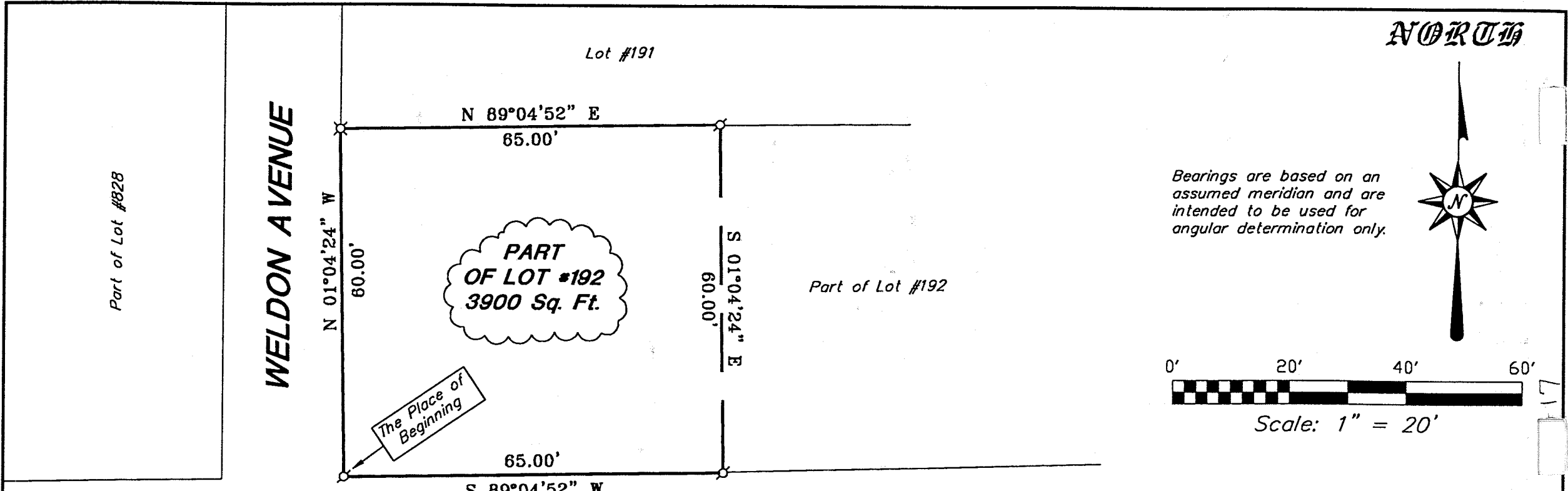


0-17



NORTH



Bearings are based on an assumed meridian and are intended to be used for angular determination only.



Scale: 1" = 20'

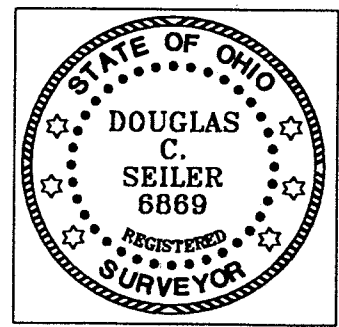
LEGEND

- ⊗ Mag Nail spike, set
- ⊗ 5/8" Iron Pin with cap, stamped "SEILER 6869", set

WEST SECOND STREET

Douglas C. Seiler 7/27/01

SURVEY BY: DOUGLAS C. SEILER
 PROFESSIONAL SURVEYOR #6869
 52-1/2 NORTH MAIN STREET
 MANSFIELD, OHIO 44902
 (419) 525-3644
 FAX (419) 525-3696



NEW SURVEY
 OF EXISTING PARCEL
 RICHLAND COUNTY
 TAX MAP OFFICE
 INITIAL DATE
 JS 7-30-01

SURVEY PLAT FOR	
PROPERTY TRANSFER	
PART OF LOT #192 CITY OF MANSFIELD OHIO	
DATE: JULY 26, 2001	SCALE: 1"=20'
82w2nd.asc/.dwg	

Douglas C. Seiler

Professional Land Surveyor

52½ North Main • Mansfield, Ohio 44902
(419) 525-3644 • FAX (419) 525-3696

SURVEY DESCRIPTION

PART OF LOT #192
CITY OF MANSFIELD, OHIO

Situated in the City of Mansfield, County of Richland, State of Ohio and being a part of Lot #192 of the consecutively numbered lots in said city, more particularly described as follows:

Beginning for the same at a Mag Nail spike set marking the southwest corner of said lot; Thence, North 01 degree 04 minutes 24 seconds West with the west line of said lot, a distance of 60.00 feet to an iron pin set marking the northwest corner of said lot;

Thence, North 89 degrees 04 minutes 52 seconds East with the north line of said lot, a distance of 65.00 feet to a Mag nail spike set;

Thence, South 01 degree 04 minutes 24 seconds East a distance of 60.00 feet to a Mag Nail spike set on the south line of said lot;

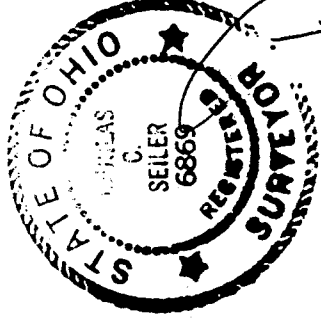
Thence, South 89 degrees 04 minutes 52 seconds West with said south line, a distance of 65.00 feet to the place of beginning, containing 3900 square feet, according to survey by Douglas C. Seiler, Professional Surveyor #6869 on July 26, 2001.


Iron pins set are 5/8" rods with caps stamped "SEILER 6869".

Bearings are based on an assumed meridian and are intended to be used for angular determination only.

NEW SURVEY
OF EXISTING PARCEL
RICHLAND COUNTY
TAX MAP OFFICE

INITIAL DCS DATE 7-30-01




Douglas C. Seiler
Professional Surveyor #6869

D-17

D-17