

LONGVIEW AVENUE 60' R/W

THE SOUTH R/W LINE OF LONGVIEW AVENUE

NORTH



CURVE "A"

$R=25.00'$

$\Delta=50^{\circ}28'43''$

$L=22.03'$

$BRG=N\ 64^{\circ}07'25''\ E$

$C\ LEN=21.32'$

NEW SURVEY  
OF EXISTING PARCEL  
RICHLAND COUNTY  
TAX MAP OFFICE

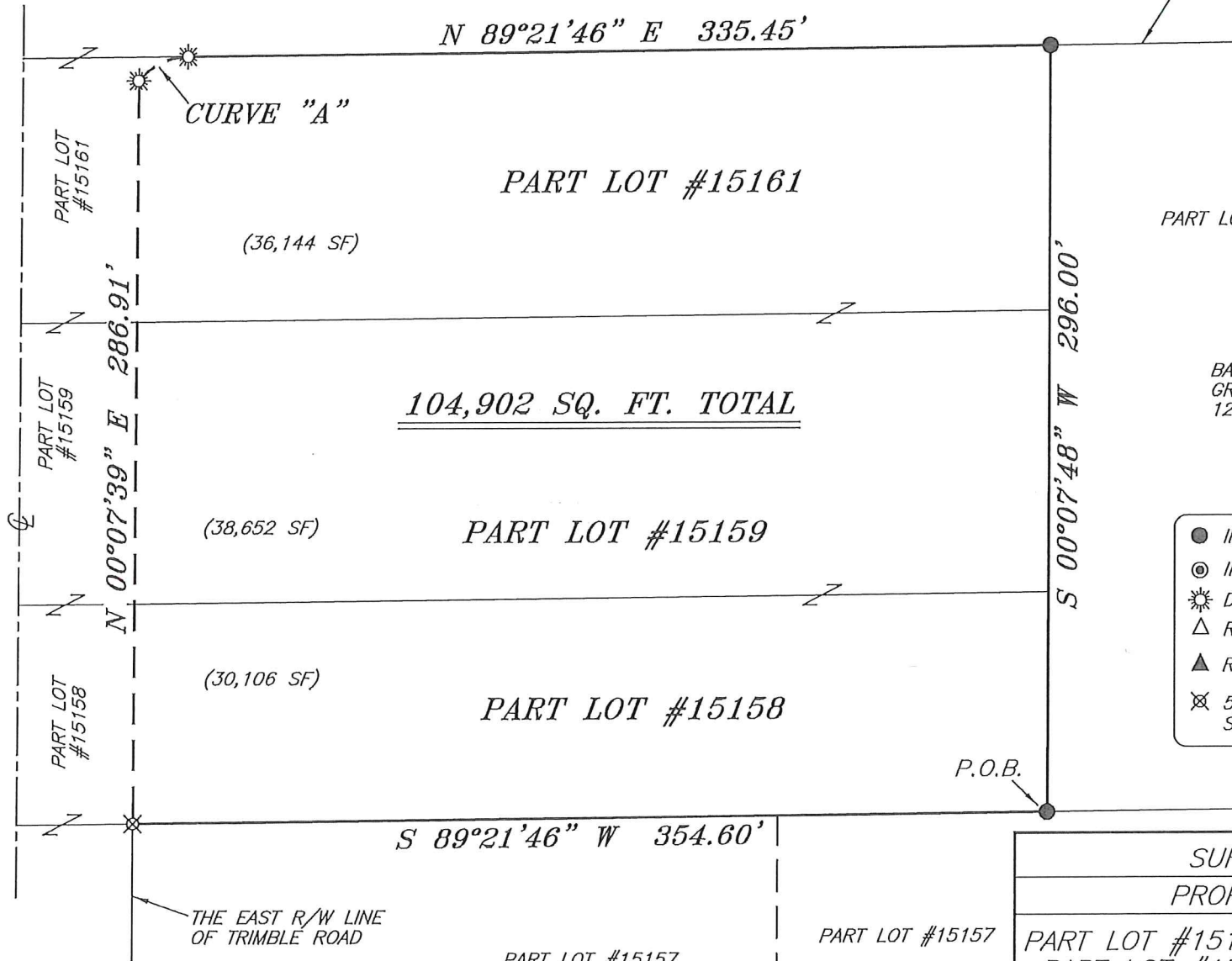
EAK 12-2017  
INITIAL DATE  
JJ-369



*Chad F. Craig*

SURVEY BY: CHAD F. CRAIG P.S. #8195  
for SEILER & CRAIG SURVEYING INC.  
270 PARK AVENUE WEST  
MANSFIELD, OHIO 44902  
(419) 525-3644  
EMAIL:SEILERANDCRAIG@SEILERANDCRAIG.COM

TRIMBLE ROAD



PART LOT #15160

BASIS OF BEARING IS STATE PLANE  
GRID NORTH NAD 83 (2011), GEOID  
12A, OHIO NORTH ZONE.

LEGEND

- IRON PIN FOUND
- ⊙ IRON PIPE FOUND
- ☼ DRILL HOLE SET IN CONCRETE
- △ RAILROAD SPIKE SET
- ▲ RAILROAD SPIKE FOUND
- ⊗ 5/8" IRON PIN SET WITH CAP  
STAMPED "CRAIG 8195"

P.O.B.

SURVEY PLAT FOR	
PROPERTY TRANSFER	
PART LOT #15158, PART LOT #15159 & PART LOT #15161, CITY OF MANSFIELD RICHLAND COUNTY, OHIO	
DATE: DECEMBER 20, 2017	SCALE: 1"=60'
TRIMBLE_RD_622	

**SEILER & CRAIG SURVEYING, INC.**

*Chad F. Craig, PS  
270 Park Avenue West  
Mansfield, Ohio 44902  
419-525-3644*

*Email: [seilerandcraig@seilerandcraig.com](mailto:seilerandcraig@seilerandcraig.com)*

**SURVEY DESCRIPTION**

PART LOT #15158, PART LOT #15159  
AND PART LOT #15161  
CITY OF MANSFIELD  
RICHLAND COUNTY, OHIO

Situated in the City of Mansfield, County of Richland, State of Ohio and being known as part Lot #15158, part Lot #15159 and part Lot #15161 of the consecutively numbered lots in said city, and being more particularly described as follows:

Beginning for the same at an iron pin found and accepted as marking the southeast corner of Lot #15158 in the City of Mansfield; Thence, South 89 degrees 21 minutes 46 seconds West with the south line of Lot #15158, 354.60 feet to an iron pin set;

Thence, North 00 degrees 07 minutes 39 seconds East 286.91 feet to a drill hole set in concrete;

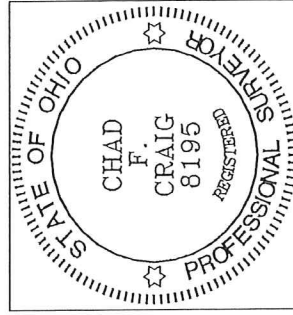
Thence, with a curve to the right, having a central angle of 50 degrees 28 minutes 43 seconds, a radius of 25.00 feet, an arc length of 22.03 feet, on a chord bearing of North 64 degrees 07 minutes 25 seconds East and a chord length of 21.32 feet to a drill hole set in concrete on the north line of Lot #15161;

Thence, North 89 degrees 21 minutes 46 seconds East with said north line, 335.45 feet to an iron pin found and accepted as marking the northeast corner of Lot #15161;

Thence, South 00 degrees 07 minutes 48 seconds West with the east line of Lot #15161 and the southerly prolongation thereof, 296.00 feet to the place of beginning, containing a total of 104,902 square feet of which 30,106 square feet are located within Part Lot #15158, 38,652 square feet are located within Part Lot #15159 and 36,144 square feet are located within Part Lot #15161 according to survey by Chad F. Craig P.S. 8195 on December 20, 2017 but subject to all legal highways, right of ways and easements of record.

Iron pins set are 5/8" rods with caps stamped "CRAIG 8195".

Bearings are based on State Plane Grid North NAD 83 (2011), Geoid 12A, Ohio North Zone and are intended to be used for angular determination only.



NEW SURVEY  
OF EXISTING PARCEL  
RICHLAND COUNTY  
TAX MAP OFFICE  
EAK 12-20-17  
INITIAL DATE  
JJ-369

*Chad F. Craig*  
Chad F. Craig P.S. #8195  
Seiler and Craig Surveying, Inc.