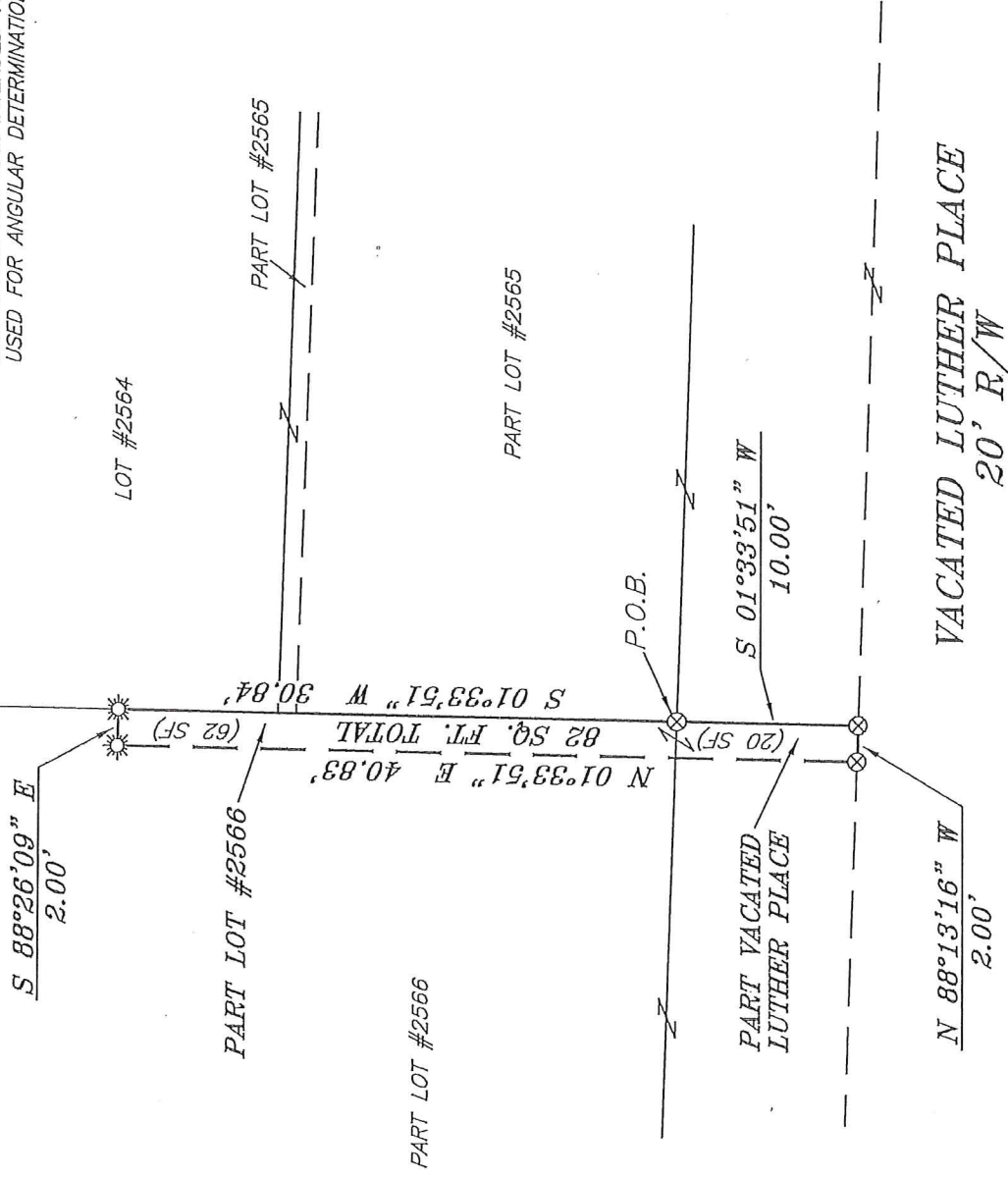


NORTH

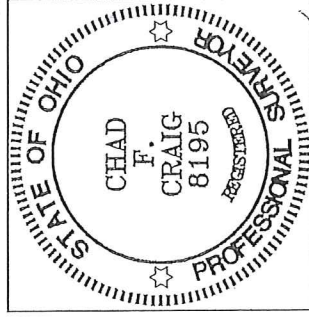


BEARINGS ARE BASED ON SURVEY J-55
ON FILE AT THE RICHLAND COUNTY TAX
MAP OFFICE AND ARE INTENDED TO BE
USED FOR ANGULAR DETERMINATION ONLY



NEW SPLIT
RICHLAND COUNTY
TAX MAP OFFICE

EAR 11-21-17
INITIAL DATE
JJ-339



Chad F. Craig

SURVEY BY:
CHAD F. CRAIG P.S. #8195
for SEILER & CRAIG SURVEYING INC.
270 PARK AVENUE WEST
MANSFIELD, OHIO 44902
(419) 525-3644
EMAIL:SEILERANDCRAIG@SEILERANDCRAIG.COM

LEGEND

- IRON PIN FOUND
- IRON PIPE FOUND
- ⊗ 3" SURVEY MARKER SET IN PAVEMENT
- ☀ DRILL HOLE SET IN CONCRETE
- ▲ RAILROAD SPIKE FOUND
- ⊗ 5/8" IRON PIN SET WITH CAP STAMPED "CRAIG 8195"

SURVEY PLAT FOR
PROPERTY TRANSFER

PART LOT #2566 AND PART VACATED
LUTHER PLACE, CITY OF MANSFIELD
RICHLAND COUNTY, OHIO

DATE: NOVEMBER 6, 2017 SCALE: 1"=10'

MECHANICS_BILLBOARD

SEILER & CRAIG SURVEYING, INC.

*Chad F. Craig, PS
270 Park Avenue West
Mansfield, Ohio 44902
419-525-3644*

Email: seilerandcraig@seilerandcraig.com

SURVEY DESCRIPTION

PART LOT #2566 AND
PART VACATED LUTHER PLACE
CITY OF MANSFIELD
RICHLAND COUNTY, OHIO

Situated in the City of Mansfield, County of Richland, State of Ohio and being known as part Lot #2566 of the consecutively numbered lots in said city and part of vacated Luther Place, and being more particularly described as follows:

Beginning for the same at 3 inch survey marker set in pavement marking the southeast corner of Lot #2566 in the City of Mansfield; Thence, South 01 degree 33 minutes 51 seconds West 10.00 feet to a 3 inch survey marker set in pavement in vacated Luther Place;

Thence, North 88 degrees 13 minutes 16 seconds West 2.00 feet to a 3 inch survey marker set in pavement in vacated Luther Place;

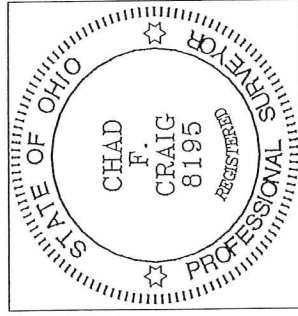
Thence, North 01 degree 33 minutes 51 seconds East 40.83 feet to a drill hole set in concrete;

Thence, South 88 degrees 26 minutes 09 seconds East 2.00 feet to a drill hole set in concrete on the east line of Lot #2566 in said city;

Thence, South 01 degree 33 minutes 51 seconds West with said east line, 30.84 feet to the place of beginning, containing a total of 82 square feet, of which 62 square feet are located within part Lot #2566 and 20 square feet are located within part vacated Luther Place according to survey by Chad F. Craig P.S. 8195 on November 6, 2017 but subject to all legal highways and easements of record.

Bearings are based on Survey J-55 on file at the Richland County Tax Map Office and are intended to be used for angular determination only.

The grantees, his heirs and assigns do hereby covenant and agree that the parcel of land described in this instrument or any portion thereof does not constitute a principal building site and will not be conveyed by said grantees, heirs and assigns independent and separate from any adjoining or contiguous parcel fronting on a public highway or street.



NEW SPLIT
RICHLAND COUNTY
TAX MAP OFFICE

EAK INITIAL
11-24-17 DATE
JJ-339


Chad F. Craig P.S. #8195
Seiler and Craig Surveying, Inc.