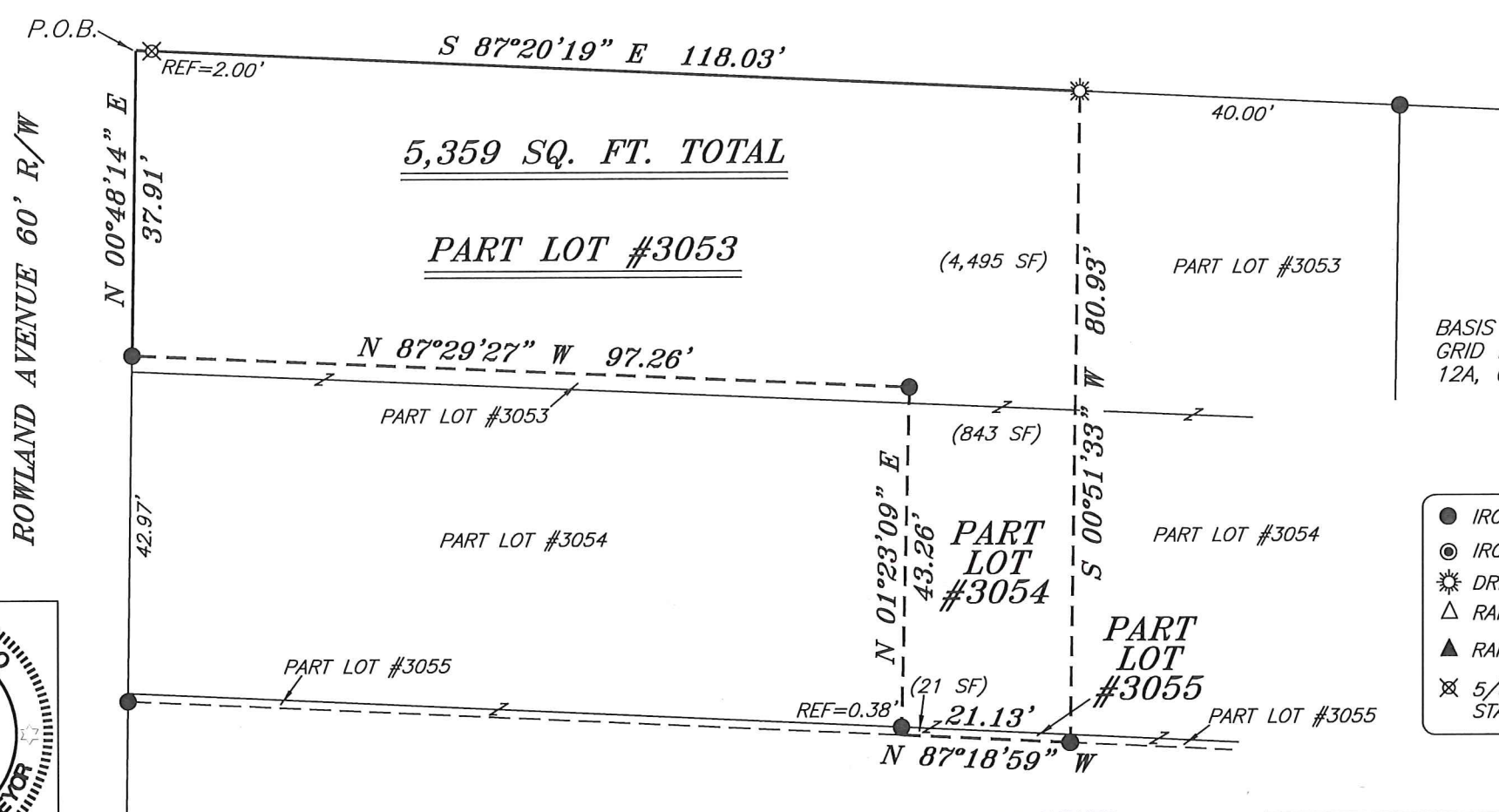


NORTH



THIRD STREET 60' R/W



5,359 SQ. FT. TOTAL

PART LOT #3053

(4,495 SF)

PART LOT #3053

N 87°29'27" W 97.26'

PART LOT #3053

(843 SF)

PART LOT #3054

PART LOT #3054

N 01°23'09" E
43.26'

PART LOT #3054

PART LOT #3055

(21 SF)

N 87°18'59" W
21.13'

PART LOT #3055

PART LOT #3055

BASIS OF BEARING IS STATE PLANE GRID NORTH NAD 83 (2011), GEOID 12A, OHIO NORTH ZONE.

LEGEND

- IRON PIN FOUND
- ⊙ IRON PIPE FOUND
- ☼ DRILL HOLE IN CONCRETE SET
- △ RAILROAD SPIKE SET
- ▲ RAILROAD SPIKE FOUND
- ⊗ 5/8" IRON PIN SET WITH CAP STAMPED "CRAIG 8195"



Chad F. Craig

SURVEY BY: CHAD F. CRAIG P.S. #8195
for SEILER & CRAIG SURVEYING INC.
270 PARK AVENUE WEST
MANSFIELD, OHIO 44902
(419) 525-3644
EMAIL: SEILERANDCRAIG@SEILERANDCRAIG.COM

REFERENCES: CLANCY SURVEY T-273
ENGLAND SURVEY M-119
DEEDS OF RECORD
TAX MAPS

NEW SURVEY
OF EXISTING PARCEL
RICHLAND COUNTY
TAX MAP OFFICE

EAK 8-29-17
INITIAL DATE
JJ-269

SURVEY PLAT FOR	
PROPERTY TRANSFER	
PART LOT #3053, PART LOT #3054 AND PART LOT #3055, CITY OF MANSFIELD RICHLAND COUNTY, OHIO	
DATE: AUGUST 22, 2017	SCALE: 1"=20'
ROWLAND_AVE_52_56	

SURVEY DESCRIPTION

PART LOT #3053, PART LOT #3054
AND PART LOT #3055
CITY OF MANSFIELD
RICHLAND COUNTY, OHIO

Situated in the City of Mansfield, County of Richland, State of Ohio and being known as part Lot #3053, part Lot #3054 and part Lot #3055 of the consecutively numbered lots in said city, and being more particularly described as follows:

Beginning for the same at the northwest corner of Lot #3053 and referenced by an iron pin set on a bearing of South 87 degrees 20 minutes 19 seconds East and at a distance of 2.00 feet; Thence, South 87 degrees 20 minutes 19 seconds East, with the north line of said lot passing through said reference pin, a total distance of 118.03 feet to a drill hole in concrete set;

Thence, South 00 degrees 51 minutes 33 seconds West 80.93 feet to an iron pin found;

Thence, North 87 degrees 18 minutes 59 seconds West 21.13 feet to a point referenced by an iron pin found on a bearing of North 01 degree 23 minutes 09 seconds East and at a distance of 0.38 feet;

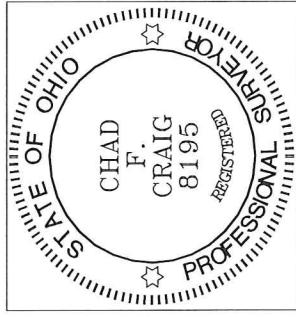
Thence, North 01 degree 23 minutes 09 seconds East, passing through said reference pin, a total distance of 43.26 feet to an iron pin found;

Thence, North 87 degrees 29 minutes 27 seconds West 97.26 feet to an iron pin found on the west line of Lot #3053;

Thence, North 00 degrees 48 minutes 14 seconds East with said west line, 37.91 feet to the place of beginning, containing a total of 5,359 square feet of which 4,495 square feet are located within part Lot #3053, 843 square feet are located within part Lot #3054 and 21 square feet are located within part Lot #3055 according to survey by Chad F. Craig P.S. 8195 on August 22, 2017 but subject to all legal highways and easements of record.

Iron pins set are 5/8" rods with caps stamped "CRAIG 8195".

Bearings are based on State Plane Grid North NAD 83 (2011), Geoid 12A, Ohio North Zone and are intended to be used for angular determination only.



NEW SURVEY
OF EXISTING PARCEL
RICHLAND COUNTY
TAX MAP OFFICE

EAK INITIAL 8-29-17 DATE
JJ-269

A handwritten signature in blue ink that reads "Chad F. Craig".

Chad F. Craig P.S. #8195
Seiler and Craig Surveying, Inc.