

DETAIL
NOT TO SCALE

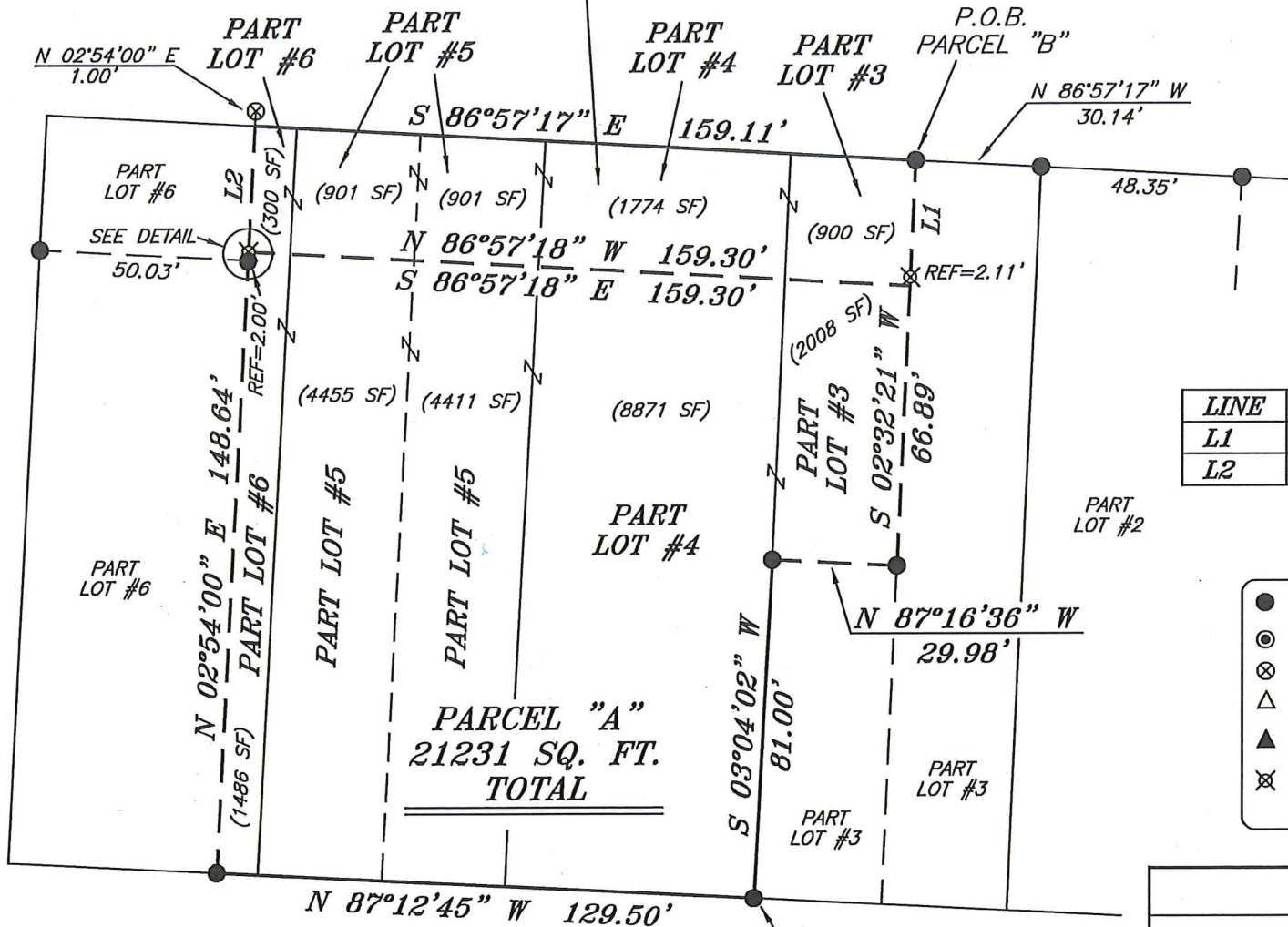


Chad F. Craig
 SURVEY BY: CHAD F. CRAIG P.S. #8195
 for SEILER & CRAIG SURVEYING INC.
 270 PARK AVENUE WEST
 MANSFIELD, OHIO 44902
 (419) 525-3644
 EMAIL:SEILERANDCRAIG@SEILERANDCRAIG.COM

PARCEL "B"
 4776 SQ. FT.
 TOTAL

TEMPLE COURT 20' R/W

NORTH FRANKLIN STREET 60' R/W



EAST FOURTH STREET 60' R/W

NEW SPLIT
 RICHLAND COUNTY
 TAX MAP OFFICE
 EAK 2-2-17

NEW SURVEY
 OF EXISTING PARCEL
 RICHLAND COUNTY
 TAX MAP OFFICE

EAK 2-2-17
 INITIAL DATE
 JJ-38



BASIS OF BEARING IS STATE PLANE
 GRID NORTH NAD 83 (2011), GEOID
 12A, OHIO NORTH ZONE.

LINE	BEARING	DISTANCE
L1	S 02°32'21" W	30.00'
L2	N 02°54'00" E	30.00'

LEGEND

- IRON PIN FOUND
- ⊙ IRON PIPE FOUND
- ⊗ 3" SURVEY MARKER SET IN PAVEMENT
- △ RAILROAD SPIKE SET
- ▲ RAILROAD SPIKE FOUND
- ⊗ 5/8" IRON PIN SET WITH CAP STAMPED "CRAIG 8195"

SURVEY PLAT FOR
 PROPERTY TRANSFER

LOT #4, LOT #5, PART LOT #3 AND
 PART LOT #6, CITY OF MANSFIELD
 RICHLAND COUNTY, OHIO

DATE: JANUARY 30, 2017 SCALE: 1"=40'

TEMPLE_CT_FERNYAK

Zoning Approved
by Jayne R. Reut
 2/2/17

SEILER & CRAIG SURVEYING, INC.

Chad F. Craig, PS
270 Park Avenue West
Mansfield, Ohio 44902
419-525-3644

Email: seilerandcraig@seilerandcraig.com

**SURVEY DESCRIPTION
PARCEL "B"**

PART LOT #3, PART LOT #4, PART LOT #5 AND PART LOT #6
CITY OF MANSFIELD
RICHLAND COUNTY, OHIO

Situated in the City of Mansfield, County of Richland, State of Ohio and being known as Part Lot #3, Part Lot #4, Part Lot #5 and Part Lot #6 of the consecutively numbered lots in said city, and being more particularly described as follows:

Commencing at an iron pin found and accepted as marking the northeast corner of Lot #3 in the City of Mansfield; Thence, North 86 degrees 57 minutes 17 seconds West with the north line of said lot, 30.14 feet to an iron pin found, the place of beginning of the parcel herein described;

Thence, South 02 degrees 32 minutes 21 seconds West, passing through an iron pin set for reference at 27.89 feet, a total distance of 30.00 feet to a point;

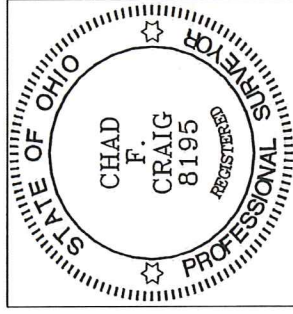
Thence, North 86 degrees 57 minutes 18 seconds West 159.30 feet to an iron pin set;

Thence, North 02 degrees 54 minutes 00 seconds East 30.00 feet to a point on the north line of Lot #6 and referenced by a 3 inch survey marker set in pavement on a bearing of North 02 degrees 54 minutes 00 seconds East and at a distance of 1.00 feet;

Thence, South 86 degrees 57 minutes 17 seconds East with said north line and the easterly prolongation thereof, 159.11 feet to the place of beginning, containing 4776 square feet, of which 900 square feet are located within Part Lot #3, 1774 square feet are located within Part Lot #4, 1802 square feet are located within Part Lot #5 and 300 square feet are located within Part Lot #6 according to survey by Chad F. Craig P.S. 8195 on January 30, 2017 but subject to all legal highways and easements of record.

Iron pins set are 5/8" rods with caps stamped "CRAIG 8195".

Bearings are based on State Plane Grid North NAD 83 (2011), Geoid 12A, Ohio North Zone and are intended to be used for angular determination only.



NEW SPLIT
RICHLAND COUNTY
TAX MAP OFFICE

EAK INITIAL 2-2-17 DATE
JJ-38

Chad F. Craig P.S. #8195
Seiler and Craig Surveying, Inc.

SEILER & CRAIG SURVEYING, INC.

Chad F. Craig, PS
270 Park Avenue West
Mansfield, Ohio 44902
419-525-3644

Email: seilerandcraig@seilerandcraig.com

**SURVEY DESCRIPTION
PARCEL "A"**

PART LOT #3, PART LOT #4, PART LOT #5 AND PART LOT #6
CITY OF MANSFIELD
RICHLAND COUNTY, OHIO

Situated in the City of Mansfield, County of Richland, State of Ohio and being known as Part Lot #3, Part Lot #4, Part Lot #5 and Part Lot #6 of the consecutively numbered lots in said city, and being more particularly described as follows:

Beginning for the same at an iron pin found and accepted as marking the southeast corner of Lot #4 in the City of Mansfield; Thence, North 87 degrees 12 minutes 45 seconds West with the south line of said lot and the westerly prolongation thereof, 129.50 feet to an iron pin found on the south line of Lot #6,

Thence, North 02 degrees 54 minutes 00 seconds East, passing through an iron pin found at 146.64 feet, a total distance of 148.64 feet to an iron pin set;

Thence, South 86 degrees 57 minutes 18 seconds East 159.30 feet to point referenced by an iron pin set on a bearing of North 02 degrees 32 minutes 21 seconds East and at a distance of 2.11 feet;

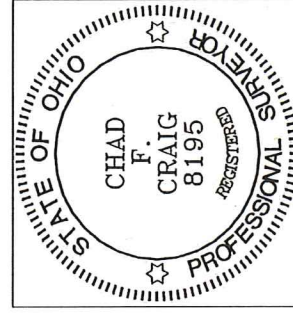
Thence, South 02 degrees 32 minutes 21 seconds West 66.89 feet to an iron pin found;

Thence, North 87 degrees 16 minutes 36 seconds West 29.98 feet to an iron pin found on the east line of Lot #4;

Thence, South 03 degrees 04 minutes 02 seconds West with said east line, 81.00 feet to the place of beginning, containing 21,231 square feet, of which 2008 square feet are located within Part Lot #3, 8871 square feet are located within Part Lot #4, 8866 square feet are located within Part Lot #5 and 1486 square feet are located within Part Lot #6 according to survey by Chad F. Craig P.S. 8195 on January 30, 2017 but subject to all legal highways and easements of record.

Iron pins set are 5/8" rods with caps stamped "CRAIG 8195".

Bearings are based on State Plane Grid North NAD 83 (2011), Geoid 12A, Ohio North Zone and are intended to be used for angular determination only.



NEW SURVEY
OF EXISTING PARCEL
RICHLAND COUNTY
TAX MAP OFFICE

EAK 22-17
INITIAL DATE
JJ-38

Chad F. Craig

Chad F. Craig P.S. #8195
Seiler and Craig Surveying, Inc.