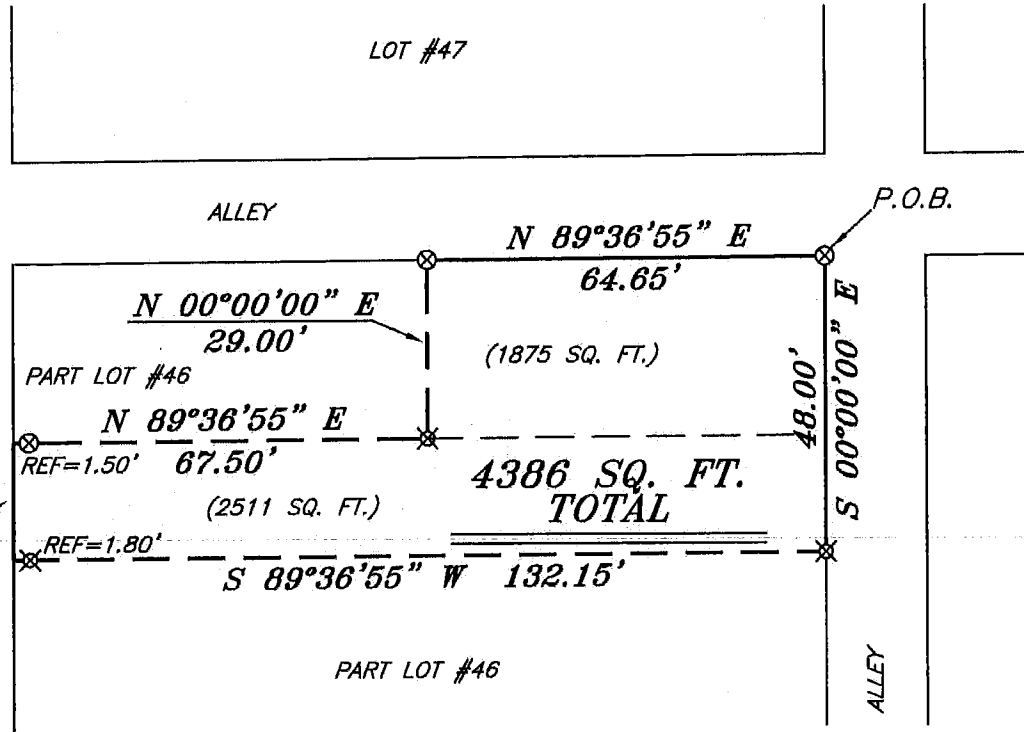


NORTH



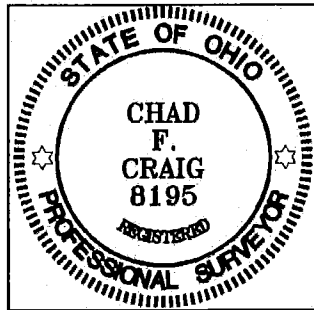
BEARINGS ARE BASED ON AN ASSUMED MERIDIAN AND ARE INTENDED TO BE USED FOR ANGULAR DETERMINATION ONLY

MAIN STREET
66' R/W



LEGEND

- IRON PIN FOUND
- ⊕ 2" MAG NAIL SPIKE SET
- ⊗ 3" SURVEY MARKER SET
- △ RAILROAD SPIKE SET
- ▲ RAILROAD SPIKE FOUND
- ⊗ 5/8" IRON PIN SET WITH CAP STAMPED "CRAIG 8195"



Chad F. Craig

SURVEY BY: CHAD F. CRAIG P.S. #8195
for SEILER & CRAIG SURVEYING INC.
52-1/2 NORTH MAIN STREET
MANSFIELD, OHIO 44902
(419) 525-3644
EMAIL: SEILERANDCRAIG@SEILERANDCRAIG.COM

NEW SURVEY
OF EXISTING PARCEL
RICHLAND COUNTY
TAX MAP OFFICE

EAK 12-23-15
INITIAL DATE
HH-343

SURVEY PLAT FOR
MECHANICS BANK

PART LOT #46
VILLAGE OF BELLVILLE
RICHLAND COUNTY, OHIO

DATE: JULY 23, 2014 SCALE: 1"=30'

MECHANICS_BANK

SEILER & CRAIG SURVEYING, INC.

Chad F. Craig, P.S.
270 Park Avenue West
Mansfield, Ohio 44902
419-525-3644

Email: seilerandcraig@seilerandcraig.com
www.seilerandcraig.com

SURVEY DESCRIPTION

PART LOT #46
VILLAGE OF BELLVILLE
RICHLAND COUNTY, OHIO

Situated in the Village of Bellville, County of Richland, State of Ohio and being known as part of Lot #46 of the consecutively numbered lots in said village, and being more particularly described as follows:

Beginning for the same at a 3" survey spike set marking the northeast corner of said lot in said village; Thence, South 00 degrees 00 minutes 00 seconds East with the east line of said lot, a distance of 48.00 feet to an iron pin set;

Thence, South 89 degrees 36 minutes 55 seconds West passing through an iron pin set for reference at 130.35 feet, a total distance of 132.15 feet to a point on the west line of said lot;

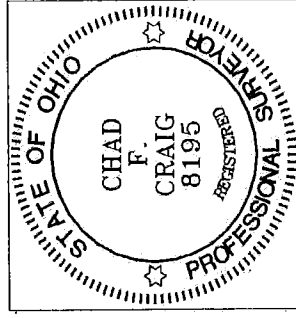
Thence, North 00 degrees 00 minutes 00 seconds East with said west line, a distance of 19.00 feet to a point referenced by an iron pin set on a bearing of North 89 degrees 36 minutes 55 seconds East and at a distance of 1.50 feet, a total distance of 67.50 feet to an iron pin set;

Thence, North 89 degrees 36 minutes 55 seconds East, passing through said reference pin, 67.50 feet to an iron pin set;

Thence, North 00 degrees 00 minutes 00 seconds East a distance of 29.00 feet to a 3" survey spike set on the north line of said lot;

Thence, North 89 degrees 36 minutes 55 seconds East with said north line, a distance of 64.65 feet to the place of beginning containing 4,386 square feet according to survey by Chad F. Craig P.S. #8195 for Seiler and Craig Surveying, Inc. on July 23, 2014 but subject to all easements and highways of record.

Bearings are based on an assumed meridian and are intended to be used for angular determination only.



NEW SURVEY
OF EXISTING PARCEL
RICHLAND COUNTY
TAX MAP OFFICE

EAK 17-23-15
INITIAL DATE

HH-343

A handwritten signature in black ink that reads "Chad F. Craig".

Chad F. Craig P.S. #8195
Seiler and Craig Surveying, Inc.