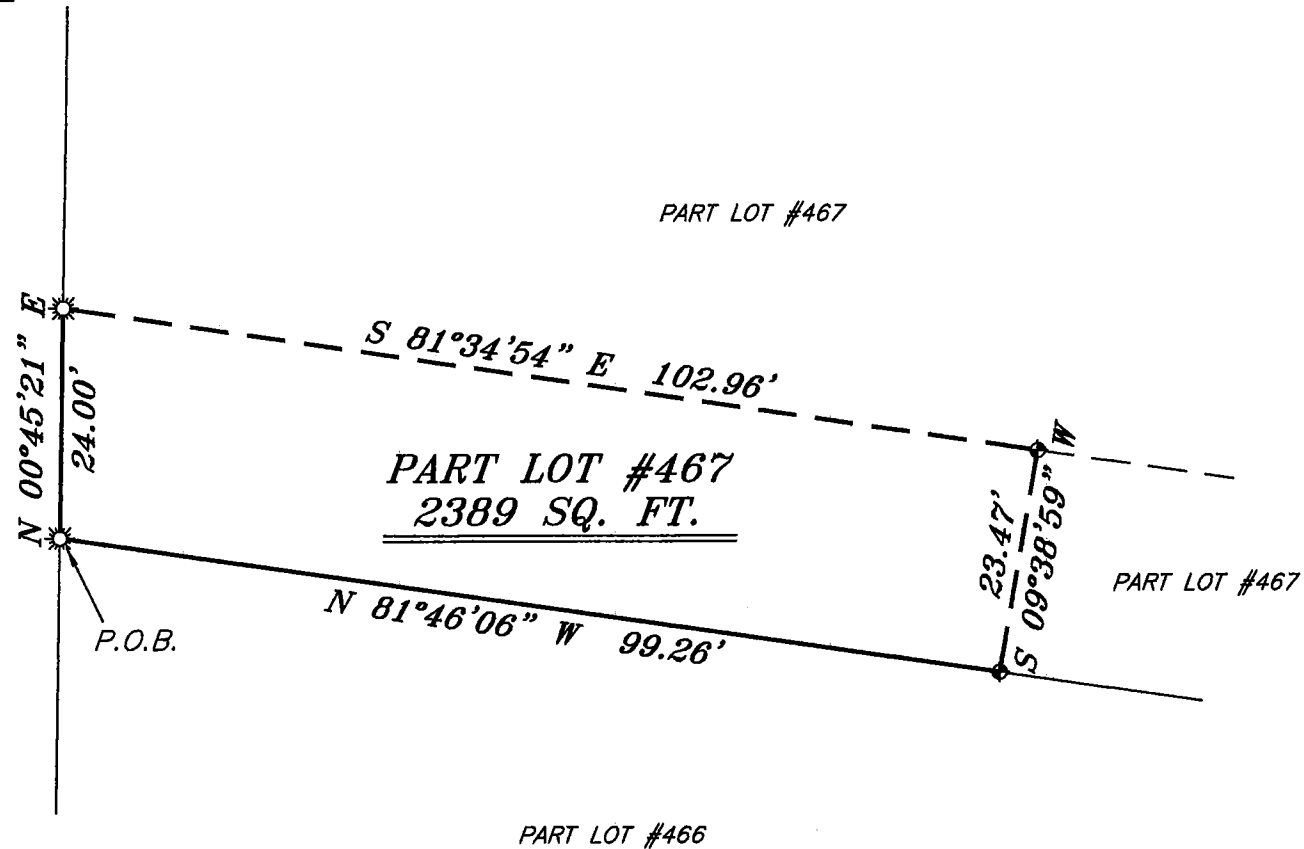


NORTH



BEARINGS ARE BASED ON AN ASSUMED MERIDIAN AND ARE INTENDED TO BE USED FOR ANGULAR DETERMINATION ONLY

NORTH MAIN STREET 60' R/W



LEGEND

- IRON PIN FOUND
- ☀ DRILL HOLE SET
- ⊗ 3" SURVEY MARKER SET
- △ RAILROAD SPIKE SET
- ◆ CORNER OF MASONRY BUILDING
- ⊗ 5/8" IRON PIN SET WITH CAP STAMPED "CRAIG 8195"



Chad F. Craig

SURVEY BY: CHAD F. CRAIG P.S. #8195
for SEILER & CRAIG SURVEYING INC.
270 PARK AVENUE WEST
MANSFIELD, OHIO 44902
(419) 525-3644
EMAIL: SEILERANDCRAIG@SEILERANDCRAIG.COM

Zoning Approved
By *Jaybird Ruel*
Date *9/29/2015*

NEW SPLIT
RICHLAND COUNTY
TAX MAP OFFICE
EAK 10-1-15
INITIAL DATE
HH-254

| | |
|---|---------------|
| SURVEY PLAT FOR | |
| PROPERTY TRANSFER | |
| PART LOT #467 CITY OF MANSFIELD RICHLAND COUNTY, OHIO | |
| DATE: AUGUST 28, 2015 | SCALE: 1"=20' |
| MAIN_ST_128 | |

SEILER & CRAIG SURVEYING, INC.

Chad F. Craig, PS
270 Park Avenue West
Mansfield, Ohio 44902
419-525-3644
Email: seilerandcraig@seilerandcraig.com
www.seilerandcraig.com

SURVEY DESCRIPTION

PART LOT #467
CITY OF MANSFIELD
RICHLAND COUNTY, OHIO

Situated in the City of Mansfield, County of Richland, State of Ohio and being known as part Lot #467 of the consecutively numbered lots in said city, and being more particularly described as follows:

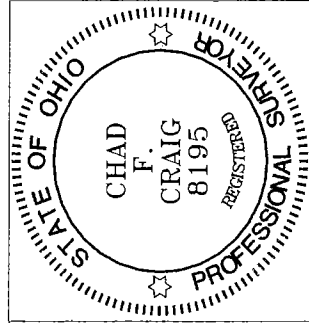
Beginning for the same at a drill hole set, the same being the southwest corner of Lot #467 in said city; Thence, North 00 degree 45 minutes 21 seconds East with the west line of said lot, 24.00 feet to a drill hole set;

Thence, South 81 degrees 34 minutes 54 seconds East 102.96 feet to a corner of a masonry building;

Thence, South 09 degrees 38 minutes 59 seconds West 23.47 feet to a corner of a masonry building, the same being a point on the south line of said lot;

Thence, North 81 degrees 46 minutes 06 seconds West with said south line, 99.26 feet to the place of beginning, containing 2,389 square feet according to survey by Chad F. Craig P.S. 8195 on August 28, 2015 but subject to all legal highways and easements of record.

Bearings are based on an assumed meridian and are intended to be used for angular determination only.



NEW SPLIT
RICHLAND COUNTY
TAX MAP OFFICE

EAK 10-115
INITIAL DATE
HH-254

Chad F. Craig P.S. #8195
Seiler and Craig Surveying, Inc.