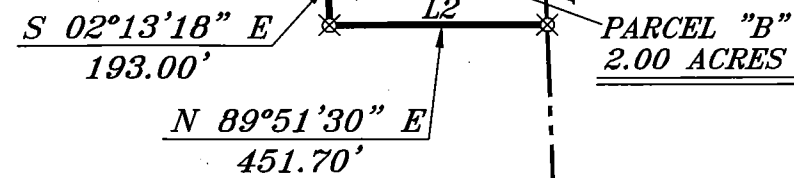
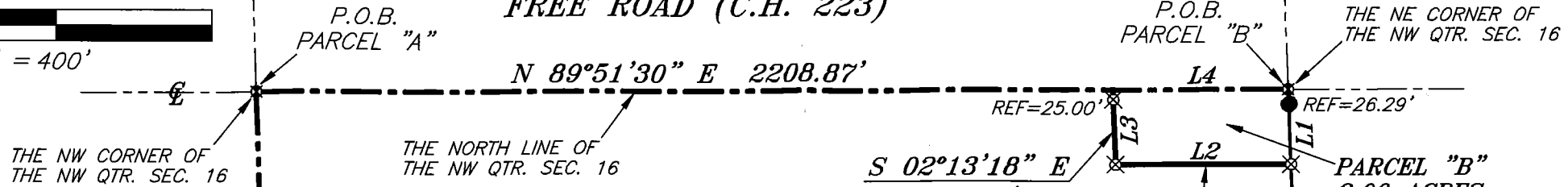


FREE ROAD (C.H. 223)



BASIS OF BEARING IS STATE PLANE GRID NORTH NAD 83 (2011), GEOID 12A, OHIO NORTH ZONE.

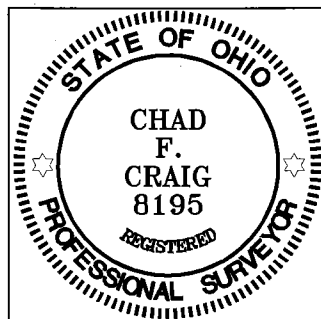
E. & A. SENSENIG
O.R.V. 2, PAGE 375

LEGEND

- IRON PIN FOUND
- WOODEN FENCE POST FOUND
- ⊗ 3" SURVEY MARKER SET
- ⊠ SURVEY MARKER FOUND
- ▲ RAILROAD SPIKE FOUND
- ⊗ 5/8" IRON PIN SET WITH CAP STAMPED "CRAIG 8195"

NEW SPLIT
RICHLAND COUNTY
TAX MAP OFFICE
EAK 9-23-15
INITIAL DATE

NEW SURVEY
OF EXISTING PARCEL
RICHLAND COUNTY
TAX MAP OFFICE
EAK 9-23-15
INITIAL DATE
HH-243



Chad F. Craig

SURVEY BY: CHAD F. CRAIG P.S. #8195
for SEILER & CRAIG SURVEYING INC.
270 PARK AVENUE WEST
MANSFIELD, OHIO 44902
(419) 525-3644
EMAIL:SEILERANDCRAIG@SEILERANDCRAIG.COM

PARCEL "A"
160.54 ACRES

B. HAMMAN
O.R.V. 821, PAGE 688

LINE	BEARING	DISTANCE
L1	S 02°13'18" E	193.00'
L2	S 89°51'30" W	451.70'
L3	N 02°13'18" W	193.00'
L4	N 89°51'30" E	451.70'

H. & D. BURKHOLDER TRUSTEES
O.R.V. 1991, PAGE 716 & 718

THE WEST LINE OF
THE NW QTR. SEC. 16

THE SW CORNER OF
THE NW QTR. SEC. 16

SEE
DETAIL

N 71°29'07" E
13.06'

THE SOUTH LINE OF
THE NW QTR. SEC. 16

S 89°28'16" W 2393.10'

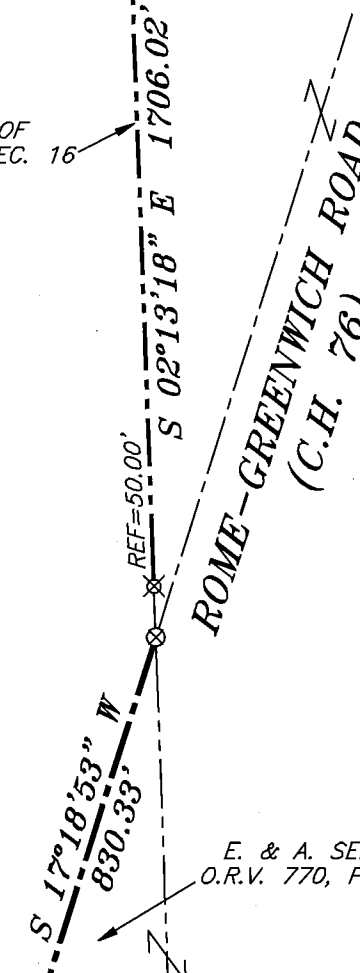
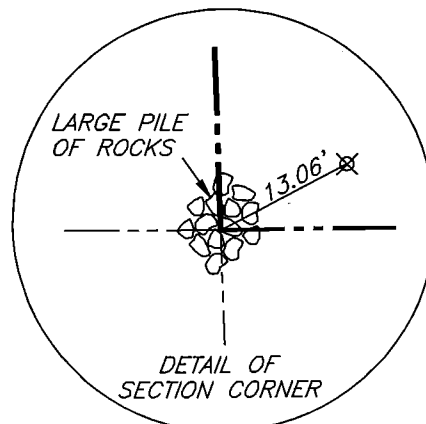
REF=20.00'

E. & A. SENSENIG
O.R.V. 770, PAGE 275

THE SE CORNER OF
THE NE QTR. SEC. 16

S 89°31'21" E 2667.43'

FENCE ANCHOR
FOUND 3.5' SOUTH



SURVEY PLAT FOR PROPERTY TRANSFER	
PART NW QTR. SEC. 16, T-23, R-18 BLOOMINGGROVE TOWNSHIP RICHLAND COUNTY, OHIO	
DATE: AUGUST 31, 2015	SCALE: 1"=400'
FREE_RD_439	

*Mark Henry - zoning inspector
Bloomingsville Twp*

SEILER & CRAIG SURVEYING, INC.

Chad F. Craig, PS
270 Park Avenue West
Mansfield, Ohio 44902
419-525-3644

Email: seilerandcraig@seilerandcraig.com
www.seilerandcraig.com

**SURVEY DESCRIPTION
PARCEL "A"**

**PART OF THE NW QUARTER OF SECTION 16
BLOOMINGGROVE TOWNSHIP
RICHLAND COUNTY, OHIO**

Situated in the Township of Bloominggrove, County of Richland, State of Ohio and being a part of the Northwest Quarter of Section 16, of Township 23 North, Range 18 West, and being more particularly described as follows:

Beginning for the same at a survey marker found and accepted as marking the northwest corner of said quarter section, the same being a point in the centerline of Free Road (C.H. 223); Thence, North 89 degrees 51 minutes 30 seconds East with the north line of said quarter section and said centerline, 2208.87 feet to a point referenced by an iron pin set on a bearing of South 02 degrees 13 minutes 18 seconds East and at a distance of 25.00 feet;

Thence, South 02 degrees 13 minutes 18 seconds East, passing through said iron pin, a total distance of 193.00 feet to an iron pin set;

Thence, North 89 degrees 51 minutes 30 seconds East, 451.70 feet to an iron pin set on the east line of said quarter section;

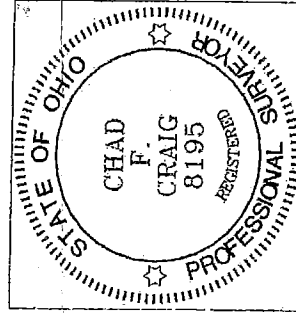
Thence, South 02 degrees 13 minutes 18 seconds East with said east line, passing through an iron pin set for reference at 1656.02 feet, a total distance of 1706.02 feet to a 3 inch survey marker set in the centerline of Rome-Greenwich Road (C.H. 76);

Thence, South 17 degrees 18 minutes 53 seconds West with said centerline, 830.33 feet to a point on the south line of said quarter section and referenced by an iron pin set on a bearing of South 89 degrees 28 minutes 16 seconds West and at a distance of 20.00 feet;

Thence, South 89 degrees 28 minutes 16 seconds West, passing through said reference pin, a total distance of 2393.10 feet to the southwest corner of said quarter section and referenced by an iron pin set on a bearing of North 71 degrees 29 minutes 07 seconds East and at a distance of 13.06 feet;

Thence, North 01 degree 59 minutes 27 seconds West with the west line of said quarter section 2707.44 feet to the place of beginning, containing 160.54 acres according to survey by Chad F. Craig P.S. #8195 for Seiler & Craig Surveying, Inc. on August 31, 2015, but subject to all easements and highways of record.

Bearings are based on Ohio State Plane Coordinate System, Grid North NAD 83, Geoid 12A, Ohio North Zone and are intended to be used for angular determination only.



NEW SPLIT
RICHLAND COUNTY
TAX MAP OFFICE

EAV 9-23-15
INITIAL DATE
HH-243

Chad F. Craig

Chad F. Craig P.S.#8195
for Seiler & Craig Surveying, Inc.

*Mark Khury - zoning inspector
Bloominggrove Twp.*

SEILER & CRAIG SURVEYING, INC.

Chad F. Craig, PS
270 Park Avenue West
Mansfield, Ohio 44902
419-525-3644

Email: seilerandcraig@seilerandcraig.com
www.seilerandcraig.com

**SURVEY DESCRIPTION
PARCEL "B"**

**PART OF THE NW QUARTER OF SECTION 16
BLOOMINGGROVE TOWNSHIP
RICHLAND COUNTY, OHIO**

Situated in the Township of Bloominggrove, County of Richland, State of Ohio and being a part of the Northwest Quarter of Section 16, of Township 23 North, Range 18 West, and being more particularly described as follows:

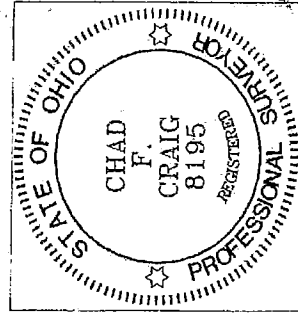
Beginning for the same at a survey marker found and accepted as marking the northeast corner of said quarter section; Thence, South 02 degrees 13 minutes 18 seconds East with the east line of said quarter section, passing through an iron pin found for reference at 26.29 feet, a total distance of 193.00 feet to an iron pin set;

Thence, South 89 degrees 51 minutes 30 seconds West a distance of 451.70 feet to an iron pin set;

Thence, North 02 degrees 13 minutes 18 seconds West passing through an iron pin set at 168.00 feet, a total distance of 193.00 feet to a point on the north line of said quarter section, the same being a point in the centerline of Free Road (C.H. 223);

Thence, North 89 degrees 51 minutes 30 seconds East with said north line and said centerline, 451.70 feet to the place of beginning, containing 2.00 acres according to survey by Chad F. Craig P.S. #8195 for Seiler & Craig Surveying, Inc. on August 31, 2015, but subject to all easements and highways of record.

Bearings are based on Ohio State Plane Coordinate System, Grid North NAD 83, Geoid 12A, Ohio North Zone and are intended to be used for angular determination only.



NEW SURVEY
OF EXISTING PARCEL
RICHLAND COUNTY
TAX MAP OFFICE

FAK INITIAL
9-23-15 DATE
HH-243

Chad F. Craig

Chad F. Craig P.S.#8195
for Seiler & Craig Surveying, Inc.

*Mark Harvey
Zoning Inspector
Bloominggrove Twp.*