

EASEMENT FOR
INGRESS & EGRESS

NORTH



BEARINGS ARE BASED ON SURVEY S-112
ON FILE AT THE RICHLAND COUNTY TAX
MAP OFFICE AND ARE INTENDED TO BE
USED FOR ANGULAR DETERMINATION ONLY

NEW SPLIT
RICHLAND COUNTY
TAX MAP OFFICE

EAR 9-14-15
INITIAL DATE
HH-229

PART LOT #473

PART LOT #473

(2403 SF)

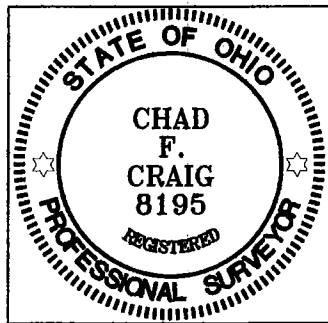
(4713 SF)

7116 SQ. FT. TOTAL

PART LOT #474

PART LOT #474

NORTH DIAMOND STREET 60' R/W



SURVEY BY: CHAD F. CRAIG P.S. #8195
for SEILER & CRAIG SURVEYING INC.
270 PARK AVENUE WEST
MANSFIELD, OHIO 44902
(419) 525-3644
EMAIL: SEILERANDCRAIG@SEILERANDCRAIG.COM

Chad F. Craig

Zoning Approved

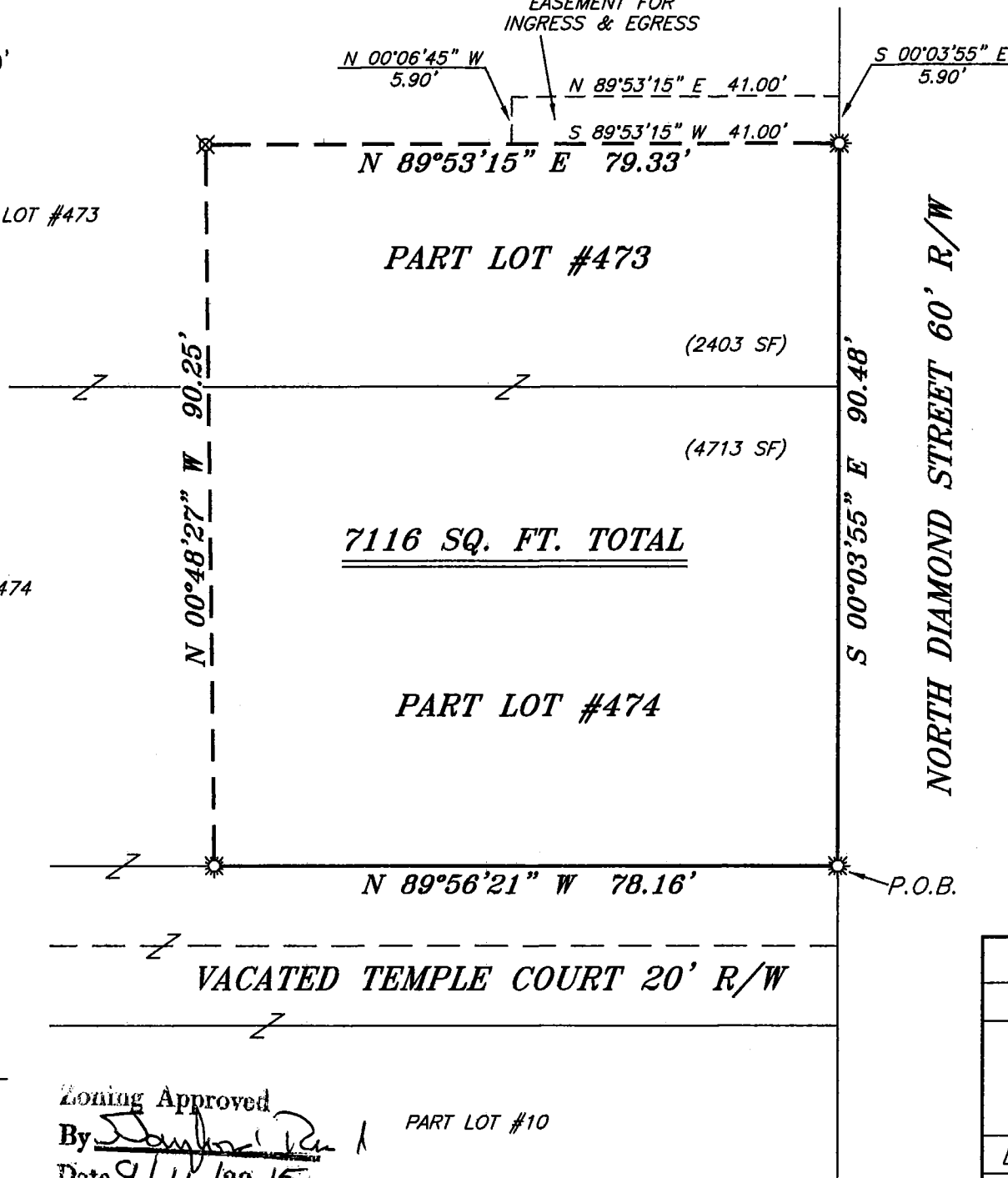
By *[Signature]*

Date 9/11/2015

PART LOT #10

- LEGEND**
- IRON PIN FOUND
 - ☀ DRILL HOLE SET
 - ⊗ 3" SURVEY MARKER SET
 - △ RAILROAD SPIKE SET
 - ▲ RAILROAD SPIKE FOUND
 - ⊠ 5/8" IRON PIN SET WITH CAP STAMPED "CRAIG 8195"

SURVEY PLAT FOR	
PROPERTY TRANSFER	
PART LOT #473 & PART LOT #474	
CITY OF MANSFIELD	
RICHLAND COUNTY, OHIO	
DATE: AUGUST 26, 2015	SCALE: 1"=20'
FERNYAK_2015	



SEILER & CRAIG SURVEYING, INC.

Chad F. Craig, PS
270 Park Avenue West
Mansfield, Ohio 44902
419-525-3644
Email: seilerandcraig@seilerandcraig.com
www.seilerandcraig.com

SURVEY DESCRIPTION

PART LOT #473 AND PART LOT #474
CITY OF MANSFIELD
RICHLAND COUNTY, OHIO

Situated in the City of Mansfield, County of Richland, State of Ohio and being known as part Lot #473 and part Lot #474 of the consecutively numbered lots in said city, and being more particularly described as follows:

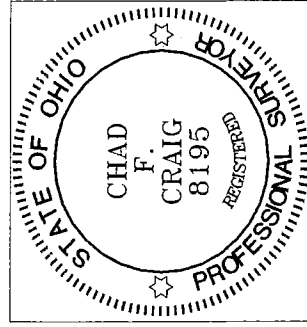
Beginning for the same at a drill hole set in concrete marking the southeast corner of Lot #474 in said city; Thence, North 89 degrees 56 minutes 21 seconds West with the south line of said lot, 78.16 feet to a drill hole set in brick pavement;

Thence, North 00 degrees 48 minutes 27 seconds West 90.25 feet to an iron pin set;

Thence, North 89 degrees 53 minutes 15 seconds East 79.33 feet to a drill hole set in concrete on the east line of Lot #473;

Thence, South 00 degrees 03 minutes 55 seconds East with said east line and the southerly prolongation thereof, 90.48 feet to the place of beginning, containing a total of 7,116 square feet of which 2,403 square feet are located within part of Lot #473 and 4,713 square feet are located within part of Lot #474 according to survey by Chad F. Craig P.S. 8195 on August 26, 2015 but subject to all legal highways and easements of record.

Bearings are based on Survey S-112 on file at the Richland County Tax Map Office and are intended to be used for angular determination only.



NEW SPLIT
RICHLAND COUNTY
TAX MAP OFFICE

FAK 9-14-15
INITIAL DATE
HH-229

Chad F. Craig P/S #8195
Seiler and Craig Surveying, Inc.