

20' ALLEY (UNIMPROVED)

NORTH

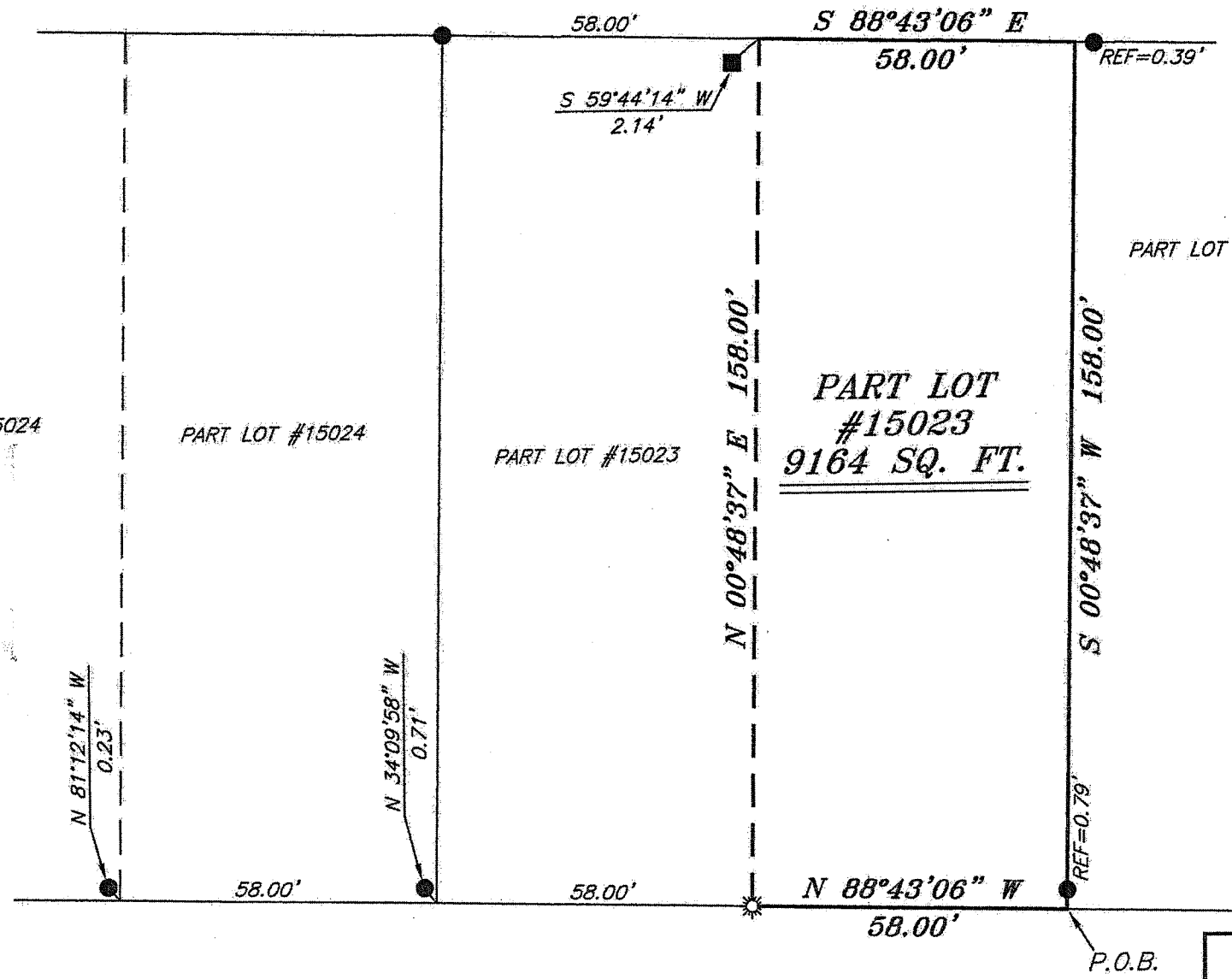


SCALE: 1" = 30'

BEARINGS ARE BASED ON SURVEY T-225 ON FILE AT THE RICHLAND COUNTY TAX MAP OFFICE AND ARE INTENDED TO BE USED FOR ANGULAR DETERMINATION ONLY

LEGEND

- IRON PIN FOUND
- ☼ DRILL HOLE IN CONCRETE SET
- METAL FENCE POST FOUND
- △ RAILROAD SPIKE SET
- ▲ RAILROAD SPIKE FOUND
- ⊗ 5/8" IRON PIN SET WITH CAP STAMPED "CRAIG 8195"



PART LOT #15024

PART LOT #15024

PART LOT #15023

PART LOT #15023
9164 SQ. FT.

PART LOT #15022

NEW SURVEY
OF EXISTING PARCEL
RICHLAND COUNTY
TAX MAP OFFICE

EAK **5-27-15**
INITIAL DATE
HH-112



BURNS STREET 60' R/W

P.O.B.

SURVEY PLAT FOR
PROPERTY TRANSFER

PART LOT #15023
CITY OF MANSFIELD
RICHLAND COUNTY, OHIO

DATE: MAY 15, 2015 SCALE: 1"=30'

BURNS_ST_516

SURVEY BY: **Chad F. Craig**
CHAD F. CRAIG P.S. #8195
for SEILER & CRAIG SURVEYING INC.
270 PARK AVENUE WEST
MANSFIELD, OHIO 44902
(419) 525-3644
EMAIL:SEILERANDCRAIG@SEILERANDCRAIG.COM

SEILER & CRAIG SURVEYING, INC.

Chad F. Craig, PS
270 Park Avenue West
Mansfield, Ohio 44902
419-525-3644

Email: seilerandcraig@seilerandcraig.com

SURVEY DESCRIPTION

PART LOT #15023
CITY OF MANSFIELD
RICHLAND COUNTY, OHIO

Situated in the City of Mansfield, County of Richland, State of Ohio and being known as part Lot #15023 of the consecutively numbered lots in said city, and being more particularly described as follows:

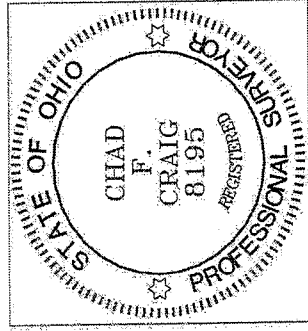
Beginning for the same at a point marking the southeast corner of Lot #15023 and being referenced by an iron pin found on a bearing of North 00 degrees 48 minutes 37 seconds East and at a distance of 0.79 feet, Thence, North 88 degrees 43 minutes 06 seconds West with the south line of said lot a distance of 58.00 feet to a drill hole in concrete set;

Thence, North 00 degrees 48 minutes 37 seconds East a distance of 158.00 feet to a point on the north line of said lot and being referenced by a metal post found on a bearing of South 59 degrees 44 minutes 14 seconds West and at a distance of 2.14 feet;

Thence, South 88 degrees 43 minutes 06 seconds East with said north line a distance of 58.00 feet to a point marking the northeast corner of said lot and being referenced by an iron pin found on a bearing of South 88 degrees 43 minutes 06 seconds East and at a distance of 0.39 feet;

Thence, South 00 degrees 48 minutes 37 seconds West with the west line of said lot and passing through an iron pin found at a distance of 157.21 feet, a total distance of 158.00 feet to the place of beginning, containing 9,164 square feet according to survey by Chad F. Craig P.S. 8195 on May 15, 2015 but subject to all legal highways and easements of record.

Bearings are based on Survey T-225 on file at the Richland County Tax Map Office and are intended to be used for angular determination only.



NEW SURVEY
OF EXISTING PARCEL
RICHLAND COUNTY
TAX MAP OFFICE

EAC 5-27-15
INITIAL DATE
HH-112

A handwritten signature in black ink that reads "Chad F. Craig".

Chad F. Craig P.S. #8195
Seiler and Craig Surveying, Inc.