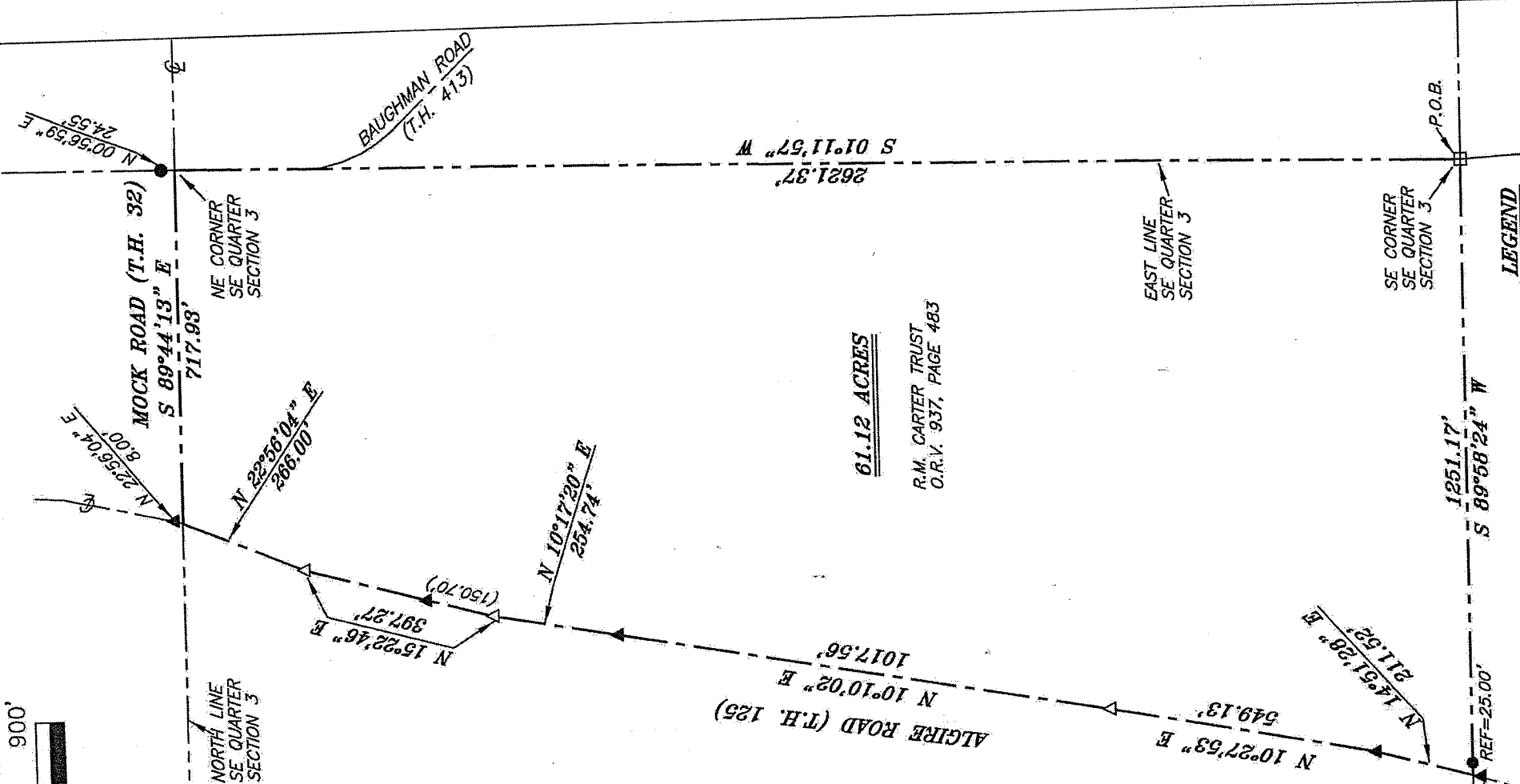


NORTH

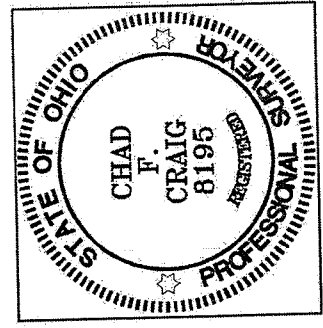


BEARINGS ARE BASED ON AN ASSUMED MERIDIAN AND ARE INTENDED TO BE USED FOR ANGULAR DETERMINATION ONLY



**61.12 ACRES**  
R.M. CARTER TRUST  
O.R.V. 937, PAGE 483

NEW SURVEY  
OF EXISTING PARCEL  
RICHLAND COUNTY  
TAX MAP OFFICE  
EAX 130-15  
INITIAL HH-17  
DATE



- LEGEND**
- IRON PIN FOUND
  - ⊠ STONE FOUND
  - △ RAILROAD SPIKE SET
  - ▲ RAILROAD SPIKE FOUND
  - ⊗ 5/8" IRON PIN SET WITH CAP STAMPED "CRAIG 8195"

|   |                |
|---|----------------|
| SURVEY FLAT FOR   |                |
| CARTER  |                |
| PART SE QTR. SECTION 3, T-19, R-19<br>PERRY TOWNSHIP<br>RICHLAND COUNTY, OHIO |                |
| DATE: NOVEMBER 14, 2014   | SCALE: 1"=400' |
| DICK_CARTER_2014  |                |

*Chad F. Craig*

SURVEY BY: CHAD F. CRAIG P.S. #8195  
for SEILER & CRAIG SURVEYING INC.  
270 Park Avenue West  
MANSFIELD, OHIO 44902  
(419) 525-3644

P.O.B.  
SE CORNER SE QUARTER SECTION 3

SOUTH LINE SE QUARTER SECTION 3

EAST LINE SE QUARTER SECTION 3

NORTH LINE SE QUARTER SECTION 3

NE CORNER SE QUARTER SECTION 3

MOCK ROAD (T.H. 32)

BAUGHMAN ROAD (T.H. 413)

ALGRE ROAD (T.H. 125)

1251.17' S 89°58'24" W

N 14°51'29" E 211.52'

N 10°27'53" E 549.13'

N 10°10'02" E 1017.56'

N 10°17'20" E 254.74'

N 22°56'04" E 286.00'

N 29°57'04" E 8.00'

2621.97' S 01°11'57" W

717.93'

S 89°44'13" E

N 00°56'59" E 24.53'

**SURVEY DESCRIPTION**

**PART OF THE SE QUARTER OF SECTION 3  
PERRY TOWNSHIP  
RICHLAND COUNTY, OHIO**

Situated in the Township of Perry, County of Richland, State of Ohio and being a part of the Southeast Quarter of Section 3, of Township 19 North, Range 19 West, and being more particularly described as follows:

Beginning for the same at a stone found and accepted as marking the southeast corner of said quarter, Thence, South 89 degrees 58 minutes 24 seconds West with the south line of said quarter passing through an iron pin found for reference at a distance of 1226.17 feet, a total distance of 1251.17 feet to a point in the centerline of Algire Road (T.H. 125);

Thence, with said Algire Road the following six (6) courses and distances:

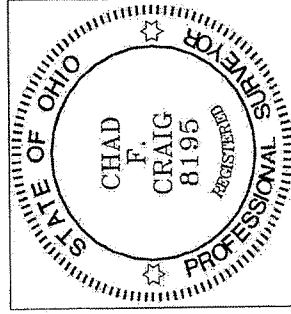
1. North 14 degrees 51 minutes 28 seconds East a distance of 211.52 feet to a railroad spike found;
2. North 10 degrees 27 minutes 53 seconds East a distance of 549.13 feet to a railroad spike set;
3. North 10 degrees 10 minutes 02 seconds East a distance of 1017.56 feet to a railroad spike found;
4. North 10 degrees 17 minutes 20 seconds East a distance of 254.74 feet to a railroad spike set;
5. North 15 degrees 22 minutes 46 seconds East passing through a railroad spike found at a distance of 150.70 feet, a total distance of 397.27 feet to a railroad spike set;
6. North 22 degrees 56 minutes 04 seconds East a distance of 266.00 feet to a point marking the intersection of said centerline with the north line of said quarter and referenced by a railroad spike found on a bearing of North 22 degrees 56 minutes 04 seconds East and at a distance of 8.00 feet;

Thence, South 89 degrees 44 minutes 13 seconds East with the north line of said quarter and with Mock Road (T.H. 32) a distance of 717.93 feet to a point marking the northeast corner of said quarter and referenced by an iron pin found on a bearing of North 00 degrees 56 minutes 59 seconds East and at a distance of 24.55 feet;

Thence, South 01 degree 11 minutes 57 seconds West with the east line of said quarter a distance of 2621.37 feet to the place of beginning, containing 61.12 acres according to survey by Chad F. Craig P.S. #8195 for Seiler & Craig Surveying, Inc. on November 14, 2014, but subject to all easements and right of ways of record.

Iron pins set are 5/8" rods with caps stamped "CRAIG 8195".

Bearings are based on an assumed meridian and are intended to be used for angular determination only.



NEW SURVEY  
OF EXISTING PARCEL  
RICHLAND COUNTY  
TAX MAP OFFICE

FAK 1-30-15  
INITIAL DATE  
HH-017

A handwritten signature in black ink, appearing to read "Chad F. Craig".

Chad F. Craig P.S.#8195  
for Seiler & Craig Surveying, Inc.