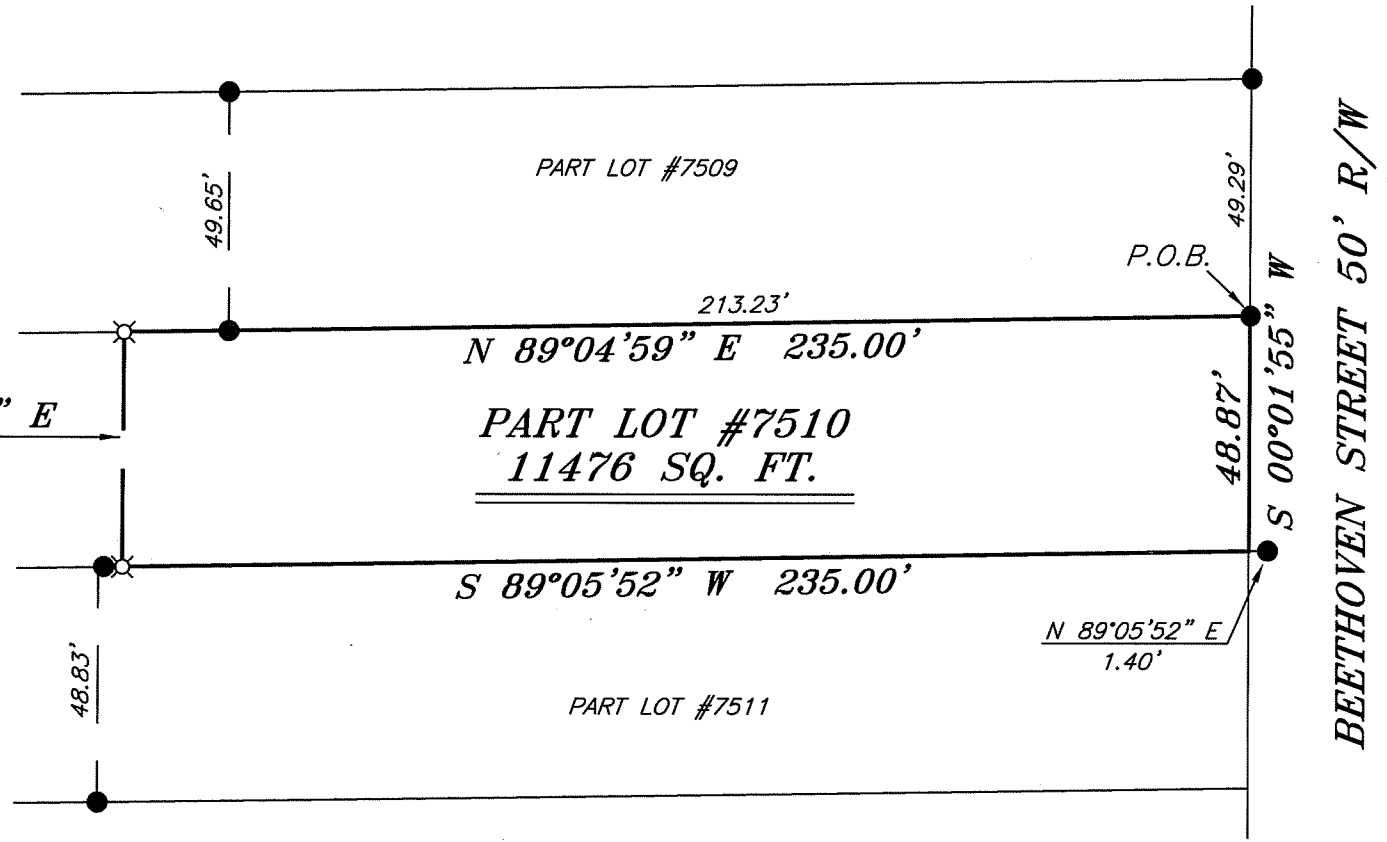


NORTH



BEARINGS ARE BASED ON AN ASSUMED MERIDIAN AND ARE INTENDED TO BE USED FOR ANGULAR DETERMINATION ONLY



LEGEND

- IRON PIN FOUND
- ⊙ 2" MAG NAIL SPIKE SET
- ⊗ 3" SURVEY MARKER SET
- △ RAILROAD SPIKE SET
- ▲ RAILROAD SPIKE FOUND
- ⊗ 5/8" IRON PIN SET WITH CAP STAMPED "CRAIG 8195"



NEW SURVEY
OF EXISTING PARCEL
RICHLAND COUNTY,
TAX MAP OFFICE
EAK 12-7-11
INITIAL DATE
CC-267

SURVEY BY: *Chad F. Craig*
CHAD F. CRAIG P.S. #8195
for SEILER & CRAIG SURVEYING INC.
52-1/2 NORTH MAIN STREET
MANSFIELD, OHIO 44902
(419) 525-3644
FAX (419) 525-3696

SURVEY PLAT FOR	
LOGAN	
PART LOT #7510 CITY OF MANSFIELD RICHLAND COUNTY, OHIO	
DATE: NOVEMBER 25, 2011	SCALE: 1"=40'
BEETHOVEN_508	

SEILER & CRAIG SURVEYING, INC.

Douglas C. Seiler, PS & Chad F. Craig, PS

52 1/2 North Main Street

Mansfield, Ohio 44902

419-525-3644 Fax: 419-525-3696

www.seilerandcraig.com

SURVEY DESCRIPTION

PART LOT #7510
CITY OF MANSFIELD,
RICHLAND COUNTY, OHIO

Situated in the City of Mansfield, County of Richland, State of Ohio and being known as part of Lot #7510 of the consecutively numbered lots in said city, and being more particularly described as follows:

Beginning for the same at an iron pin found and accepted as marking the northeast corner of Lot #7510, Thence, South 00 degrees 01 minute 55 seconds West with the east line of said lot a distance of 48.87 feet to a point referenced by an iron pin found on a bearing of North 89 degrees 05 minutes 52 seconds East and at a distance of 1.40 feet;

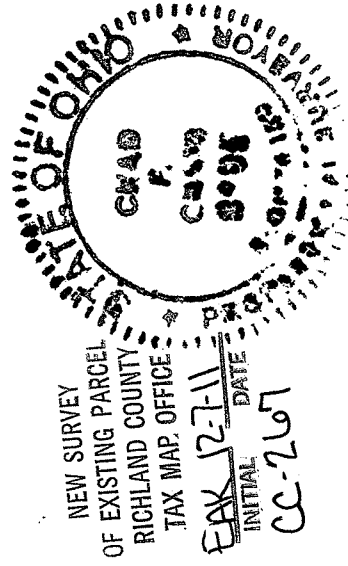
Thence, South 89 degrees 05 minutes 52 seconds West with the south line of said lot a distance of 235.00 feet to an iron pin set;

Thence, North 00 degrees 02 minutes 00 seconds East a distance of 48.81 feet to an iron pin set on the north line of said lot;

Thence, North 89 degrees 04 minutes 59 seconds East passing through an iron pin found at a distance of 21.77 feet, a total distance of 235.00 feet, to the place of beginning, containing a total of 11476 square feet, according to survey by Chad F. Craig P.S. #8195 for Seiler and Craig Surveying, Inc. on November 25, 2011, but subject to all right of ways and easements of record.

Iron pins set are 5/8" rods with caps stamped "CRAIG 8195".

Bearings are based on an assumed meridian and are intended to be used for angular determination only.



Chad F. Craig

Chad F. Craig P.S. #8195
for Seiler and Craig Surveying, Inc.