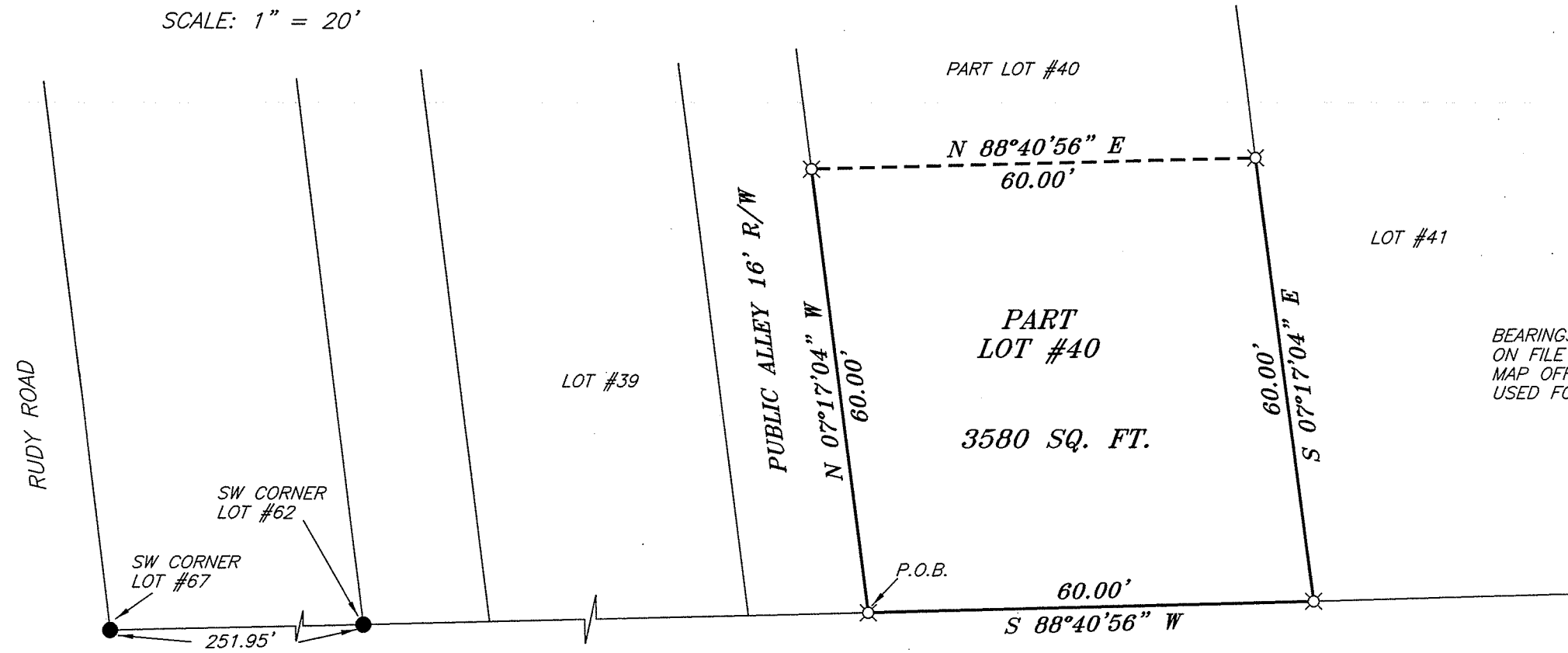




SCALE: 1" = 20'

NORTH



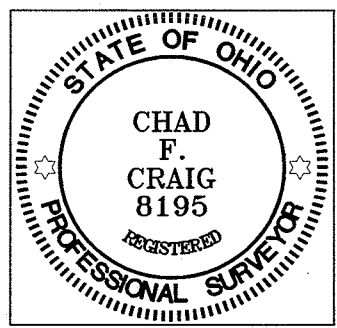
BEARINGS ARE BASED ON SURVEY 0-61 ON FILE AT THE RICHLAND COUNTY TAX MAP OFFICE AND ARE INTENDED TO BE USED FOR ANGULAR DETERMINATION ONLY.

NEW SURVEY  
OF EXISTING PARCEL  
RICHLAND COUNTY  
TAX MAP OFFICE  
**EAK** 10-26-11  
INITIAL DATE  
CC-231

PENNSYLVANIA LINES LLC  
O.R.V. 801, PAGE 593

*Chad F. Craig*

SURVEY BY: CHAD F. CRAIG P.S. #6869  
for SEILER & CRAIG SURVEYING INC.  
52-1/2 NORTH MAIN STREET  
MANSFIELD, OHIO 44902  
(419) 525-3644  
FAX (419) 525-3696



LEGEND

- IRON PIN FOUND
- ⊗ 3" SURVEY MARKER SET
- ⊕ 2" MAG NAIL SPIKE SET
- ▲ RAILROAD SPIKE FOUND
- ⊗ 5/8" IRON PIN SET WITH CAP STAMPED "CRAIG 8195"

SURVEY PLAT FOR PROPERTY TRANSFER	
PART LOT #40 CITY OF ONTARIO RICHLAND COUNTY, OHIO	
DATE: OCTOBER 7, 2011	SCALE: 1"=20'
MECHANICS_ONTARIO	

**SEILER & CRAIG SURVEYING, INC.**

*Douglas C. Seiler, PS & Chad F. Craig, PS*

*52 ½ North Main Street*

*Mansfield, Ohio 44902*

*419-525-3644 Fax: 419-525-3696*

*www.seilerandcraig.com*

**SURVEY DESCRIPTION**

PART LOT 40  
CITY OF ONTARIO,  
RICHLAND COUNTY, OHIO

Situated in the City of Ontario, County of Richland, State of Ohio and being known as part of Lot # 40 of the consecutively numbered lots in said city, and being more particularly described as follows:

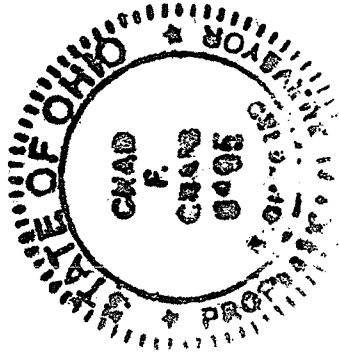
Beginning for the same at an iron pin set on the southwest corner of Lot #40; Thence, North 07 degrees 17 minutes 04 seconds West with the west line of said lot, a distance of 60.00 feet to an iron pin set;

Thence, North 88 degrees 40 minutes 56 seconds East a distance of 60.00 feet to an iron pin set on the east line of said lot;

Thence, South 07 degrees 17 minutes 04 seconds East with said east line, a distance of 60.00 feet to an iron pin set on the southeast corner thereof;

Thence, South 88 degrees 40 minutes 56 seconds West with the south line of said lot, a distance of 60.00 feet to the place of beginning containing 3,580 square feet according to survey by Chad F. Craig P.S. #8195 for Seiler and Craig Surveying, Inc. on October 7, 2011 but subject to all easements of record.

Bearings are based on Survey O-61 on file at the Richland County Tax Map Office and are intended to be used for angular determination only.



NEW SURVEY  
OF EXISTING PARCEL  
RICHLAND COUNTY  
TAX MAP OFFICE  
EAK 10-26-11  
INITIAL DATE  
CC-231

*Chad F. Craig*

Chad F. Craig P.S. #8195  
Seiler and Craig Surveying, Inc.