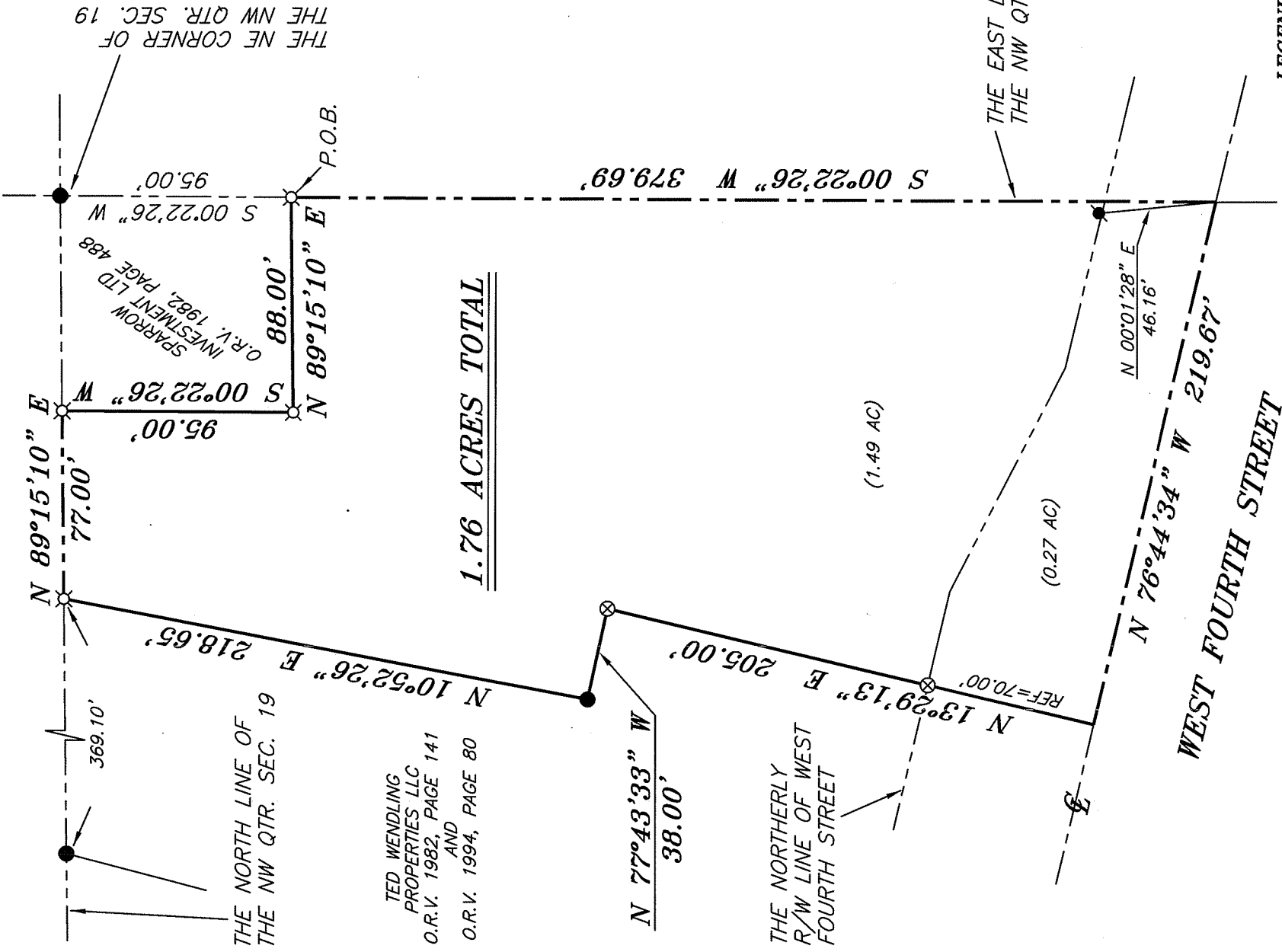
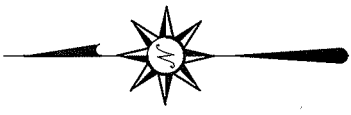




BEARINGS ARE BASED ON AN ASSUMED MERIDIAN AND ARE INTENDED TO BE USED FOR ANGULAR DETERMINATION ONLY

**NORTH**



THE NE CORNER OF THE NW QTR. SEC. 19

SPARROW INVESTMENT LTD 488  
O.R.V. 1982, PAGE 488

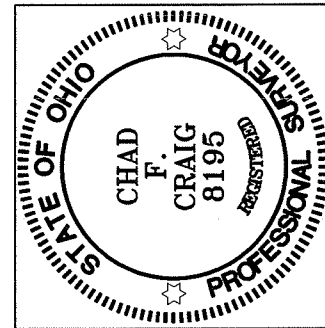
TED WENDLING  
PROPERTIES LLC  
O.R.V. 1982, PAGE 141  
AND  
O.R.V. 1994, PAGE 80

1.76 ACRES TOTAL

(1.49 AC)

(0.27 AC)

NEW SURVEY  
OF EXISTING PARCEL  
RICHLAND COUNTY  
TAX MAP OFFICE  
EAK 10-19-11  
INITIAL DATE  
CC-226



**LEGEND**

- IRON PIN FOUND
- ⊙ 2" MAG NAIL SPIKE FOUND
- ⊗ 3" SURVEY MARKER SET
- △ RAILROAD SPIKE SET
- ▲ RAILROAD SPIKE FOUND
- ⊗ 5/8" IRON PIN SET WITH CAP STAMPED "CRAIG 8195"

SURVEY PLAT FOR	
MCCREADY BOER LLC	
PART NW QTR. SEC. 19, T-21, R-18	
CITY OF MANSFIELD	
RICHLAND COUNTY, OHIO	
DATE: AUGUST 18, 2011	SCALE: 1"=60'
MCCREADY_4TH_2011	

*Chad F. Craig*

SURVEY BY: CHAD F. CRAIG P.S. #8195  
for SEILER & CRAIG SURVEYING INC.  
52-1/2 NORTH MAIN STREET  
MANSFIELD, OHIO 44902  
(419) 525-3644  
FAX (419) 525-3696

**SEILER & CRAIG SURVEYING, INC.**

Douglas C. Seiler, PS & Chad F. Craig, PS  
52 1/2 North Main Street  
Mansfield, Ohio 44902  
419-525-3644 Fax 419-525-3696  
www.seilerandcraig.com

**SURVEY DESCRIPTION**

PART NW QUARTER SECTION 19  
CITY OF MANSFIELD  
RICHLAND COUNTY, OHIO

Situated in the City of Mansfield, County of Richland, State of Ohio and being a part of the Northwest Quarter of Section 19, of Township 21 North, Range 18 West, and being more particularly described as follows:

Commencing at an iron pin found and accepted as marking the northeast corner of said quarter, Thence, South 00 degrees 22 minutes 26 seconds West with the east line of said quarter a distance of 95.00 feet to an iron pin set marking the southeast corner of a parcel currently owned by Sparrow Investment LTD. (deed reference: O.R.V. 1982, Page 488), the place of beginning of the parcel herein described;

Thence, continuing South 00 degrees 22 minutes 26 seconds West with said east line a distance of 379.69 feet to a point in the centerline of West Fourth Street, referenced by a 2 inch Mag Nail spike found on a bearing of North 00 degrees 01 minute 28 seconds East and at a distance of 46.16 feet;

Thence, North 76 degrees 44 minutes 34 seconds West with said centerline a distance of 219.67 feet to a point referenced by a 3 inch survey marker set on a bearing of North 13 degrees 29 minutes 13 seconds East and at a distance of 70.00 feet, said point marking the southeast corner of a parcel currently owned by Ted Wendling Properties LLC. (deed reference: O.R.V. 1982, Page 141 & O.R.V. 1994, Page 80);

Thence, with said Wendling property the following three (3) courses and distances:

1. North 13 degrees 29 minutes 13 seconds East passing through said survey marker, a total distance of 205.00 feet to an 3 inch survey marker set;
2. North 77 degrees 43 minutes 33 seconds West a distance of 38.00 feet to an iron pin found;
3. North 10 degrees 52 minutes 26 seconds East a distance of 218.65 feet to an iron pin set on the north line of said quarter;

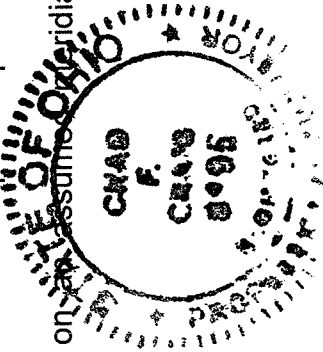
Thence, North 89 degrees 15 minutes 10 seconds East with the north line of said quarter a distance of 77.00 feet to an iron pin set marking the northwest corner of a parcel currently owned by Sparrow Investment LTD (deed reference: O.R.V. 1982, Page 488);

Thence, South 00 degrees 22 minutes 26 seconds West with the west line of said Sparrow parcel a distance of 95.00 feet to an iron pin set marking the southwest corner of said parcel;

Thence, North 89 degrees 15 minutes 10 seconds East with the south line of said parcel a distance of 88.00 feet to the place of beginning, containing 1.76 acres, according to survey by Chad F. Craig, Professional Surveyor #8195 for Seiler & Craig Surveying, Inc., on August 18, 2011, but subject to all easements and right of ways of record.

Iron pins set are 5/8" rods with caps stamped "CRAIG 8195".

Bearings are based on ~~an assumed~~ meridian and are intended to be used for angular determination only.



NEW SURVEY  
OF EXISTING PARCEL  
RICHLAND COUNTY  
TAX MAP OFFICE

EAJ 10-19-11  
INITIAL DATE

A handwritten signature in black ink that reads "Chad F. Craig".

Chad F. Craig PS #8195  
for Seiler & Craig Surveying, Inc.

CC-226