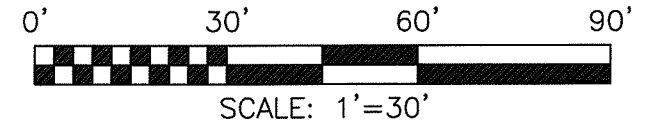
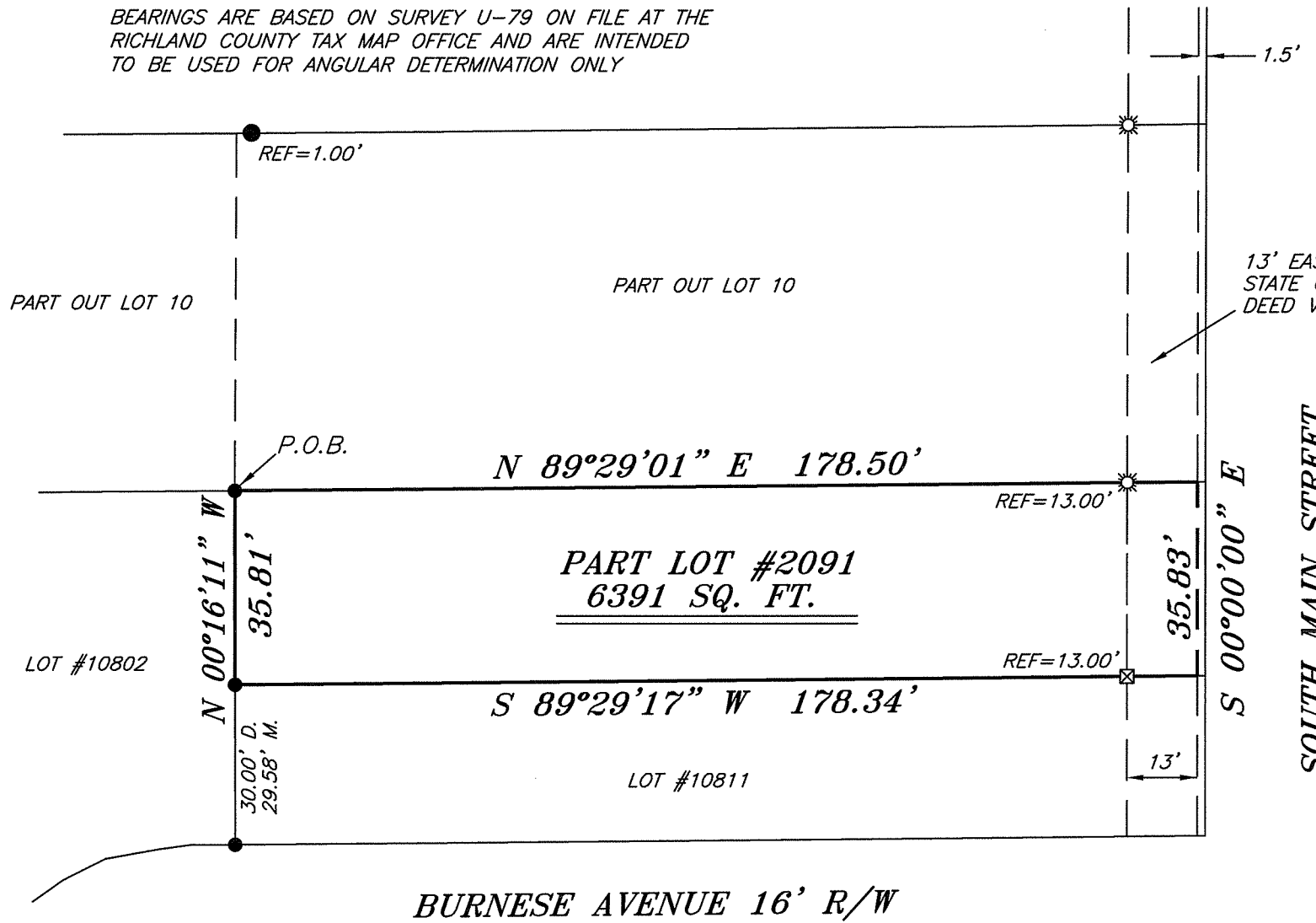


BEARINGS ARE BASED ON SURVEY U-79 ON FILE AT THE
 RICHLAND COUNTY TAX MAP OFFICE AND ARE INTENDED
 TO BE USED FOR ANGULAR DETERMINATION ONLY



NORTH



13' EASEMENT TO
 STATE OF OHIO PER
 DEED VOLUME 557, PAGE 38

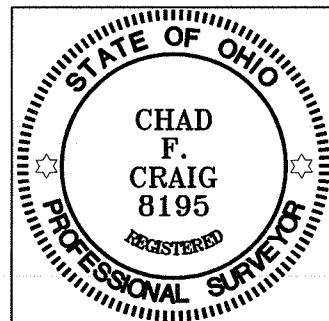
SOUTH MAIN STREET

LEGEND

- IRON PIN FOUND
- ⊗ 3 INCH SURVEY MARKER SET
- ☼ DRILL HOLE FOUND IN CONCRETE
- ⊠ CHISELED "X" IN CONCRETE
- D. DEEDED DISTANCE
- M. MEASURED DISTANCE
- ⊗ 5/8" IRON PIN SET WITH CAP
 STAMPED "CRAIG 8195"

BURNESE AVENUE 16' R/W

Chad F. Craig
 SURVEY BY: CHAD F. CRAIG P.S. #8195
 for SEILER & CRAIG SURVEYING INC.
 52-1/2 NORTH MAIN STREET
 MANSFIELD, OHIO 44902
 (419) 525-3644
 FAX (419) 525-3696



NEW SURVEY
 OF EXISTING PARCEL
 RICHLAND COUNTY
 TAX MAP OFFICE
 EAK 8-24-11
 INITIAL: DATE
 CC-174

SURVEY PLAT FOR	
198 SOUTH MAIN STREET LLC	
PART LOT #2091 CITY OF MANSFIELD RICHLAND COUNTY, OHIO	
DATE: AUGUST 16, 2011	SCALE: 1"=30'
SOUTH_MAIN_ST_198	

SEILER & CRAIG SURVEYING, INC.

Douglas C. Seiler, PS & Chad F. Craig, PS

52 1/2 North Main Street

Mansfield, Ohio 44902

419-525-3644 Fax: 419-525-3696

www.seilerandcraig.com

SURVEY DESCRIPTION

PART LOT #2091
CITY OF MANSFIELD,
RICHLAND COUNTY, OHIO

Situated in the City of Mansfield, County of Richland, State of Ohio and being known as part of Lot # 2091 of the consecutively numbered lots in said city, and being more particularly described as follows:

Beginning for the same at an iron pin found and accepted as marking the northwest corner of said lot; Thence, North 89 degrees 29 minutes 01 second East with the north line of said lot, passing through a drill hole in concrete found for reference at 165.50 feet, a total distance of 178.50 feet to a point;

Thence, South 00 degrees 00 minutes 00 seconds East a distance of 35.83 feet to a point on the south line of said lot, said point referenced by a chiseled "X" set in concrete on a bearing of South 89 degrees 29 minutes 17 seconds West and at a distance of 13.00 feet;

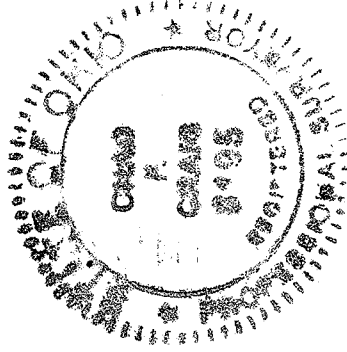
Thence, South 89 degrees 29 minutes 17 seconds West with the south line of said lot, passing through said chiseled "X", a total distance of 178.34 feet to an iron pin found on the southwest corner thereof;

Thence, North 00 degrees 16 minutes 11 seconds West with the west line of said lot, a distance of 35.81 feet to the place of beginning, containing 6391 square feet according to survey by Chad F. Craig P.S. #8195 for Seiler and Craig Surveying, Inc. on August 16, 2011 but subject to all easements of record.

Bearings are based on Survey U-79 on file at the Richland County Tax Map Office and are intended to be used for angular determination only.

NEW SURVEY
OF EXISTING PARCEL
RICHLAND COUNTY
TAX MAP OFFICE

EA 8/24/11
INITIAL DATE
CC-174



Chad F. Craig P.S. #8195
Seiler and Craig Surveying, Inc.